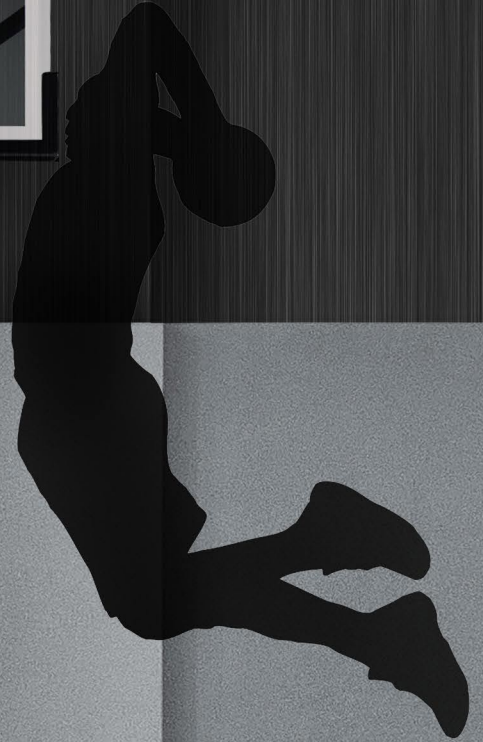


SAFETY WALL PADDING



PROPAD

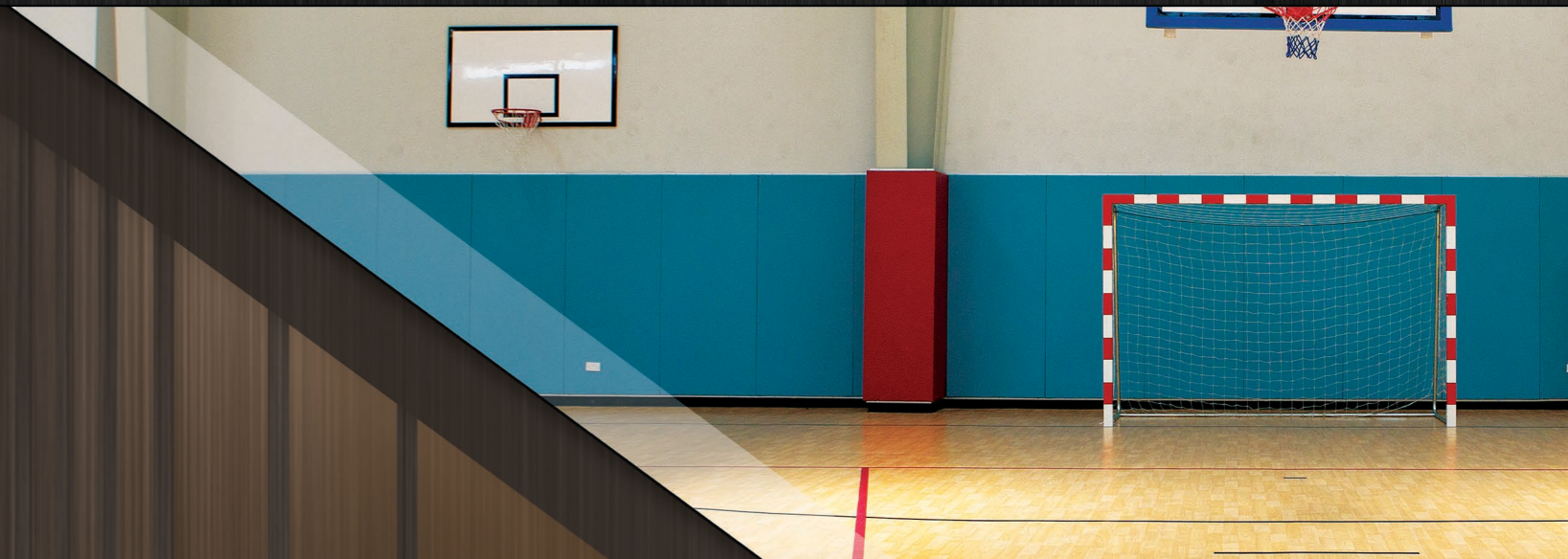




PROPAD

IDEAL FOR BASKETBALL COURTS, GYMNASTICS AREAS, WRESTLING ROOMS AND ANY SURFACE AREA WHERE PADDING IS NEEDED. IN ORDER TO PROTECT ATHLETES BEST, OUR FOAM BASE IS FROM EUROPE (FOAM COMPLETELY ABIDES BY INTERNATIONAL STANDARDS). ALL PRODUCTS ARE CERTIFIED AS THERMOFORMABLE, FRIENDLY IN CONTACT WITH SKIN, AND NON-TOXIC. PROPAD MAINTAINS THE PROFESSIONAL KNOW-HOW AND THE NECESSARY FLEXIBILITY TO PROVIDE TAILORED SOLUTIONS FOR ANY TYPE OF USE. ALL WALL PADS ARE MADE WITH 3 COMMON ELEMENTS:

- THE BACKBONE PLYWOOD BASE.
- THE HIGH QUALITY FOAM BOARDS.
- THE SYNTHETIC VINYL THAT WRAPS THE PAD.





THERE ARE 2 RATHER SIMPLE BUT EFFECTIVE METHODS OF FIXATION THAT WORK BEST WITH PROPAD. ALL SECTIONS, ELEVATIONS AND DETAILS WILL BE PORTRAYED IN THE FOLLOWING PAGES.

METHOD 1: (SEE DETAILED DRAWINGS)

THE PLYWOOD BASE EXTENDS 20MM FROM THE TOP AND BOTTOM SIDE OF THE PAD BASE, SCREWS ARE THEN MECHANICALLY FITTED TO THE WALL IN ORDER TO FIRMLY SECURE THE WALL PAD. AN ALUMINUM PLAQUE IS THEN PLACED TO COVER ALL SCREWS FOR A CLEAN FINISH.

METHOD 2: (SEE DETAILED DRAWINGS)

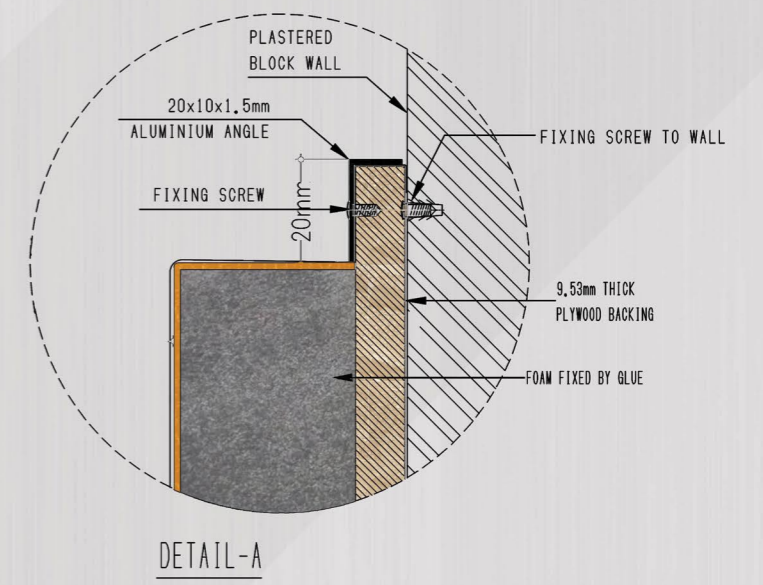
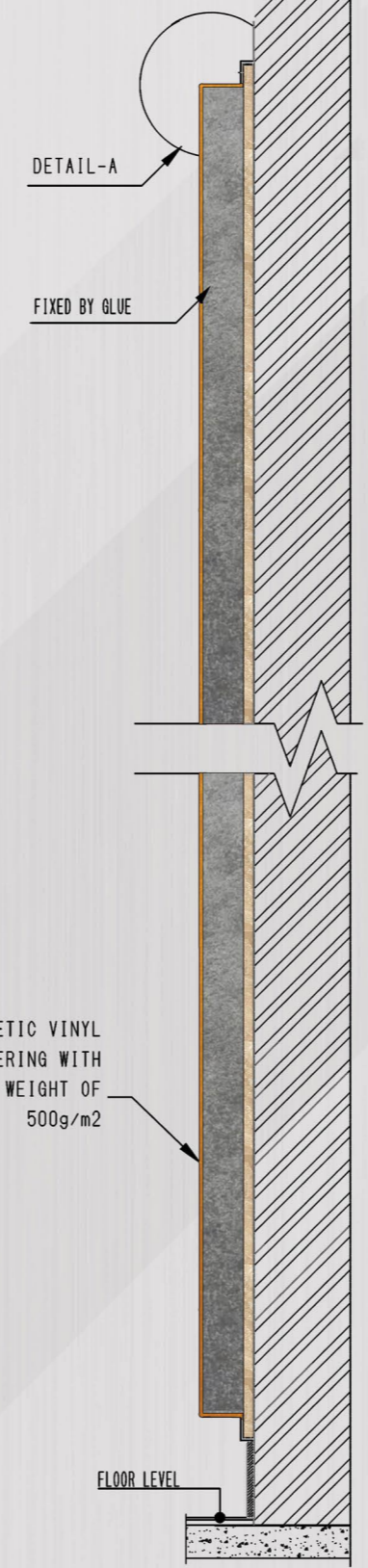
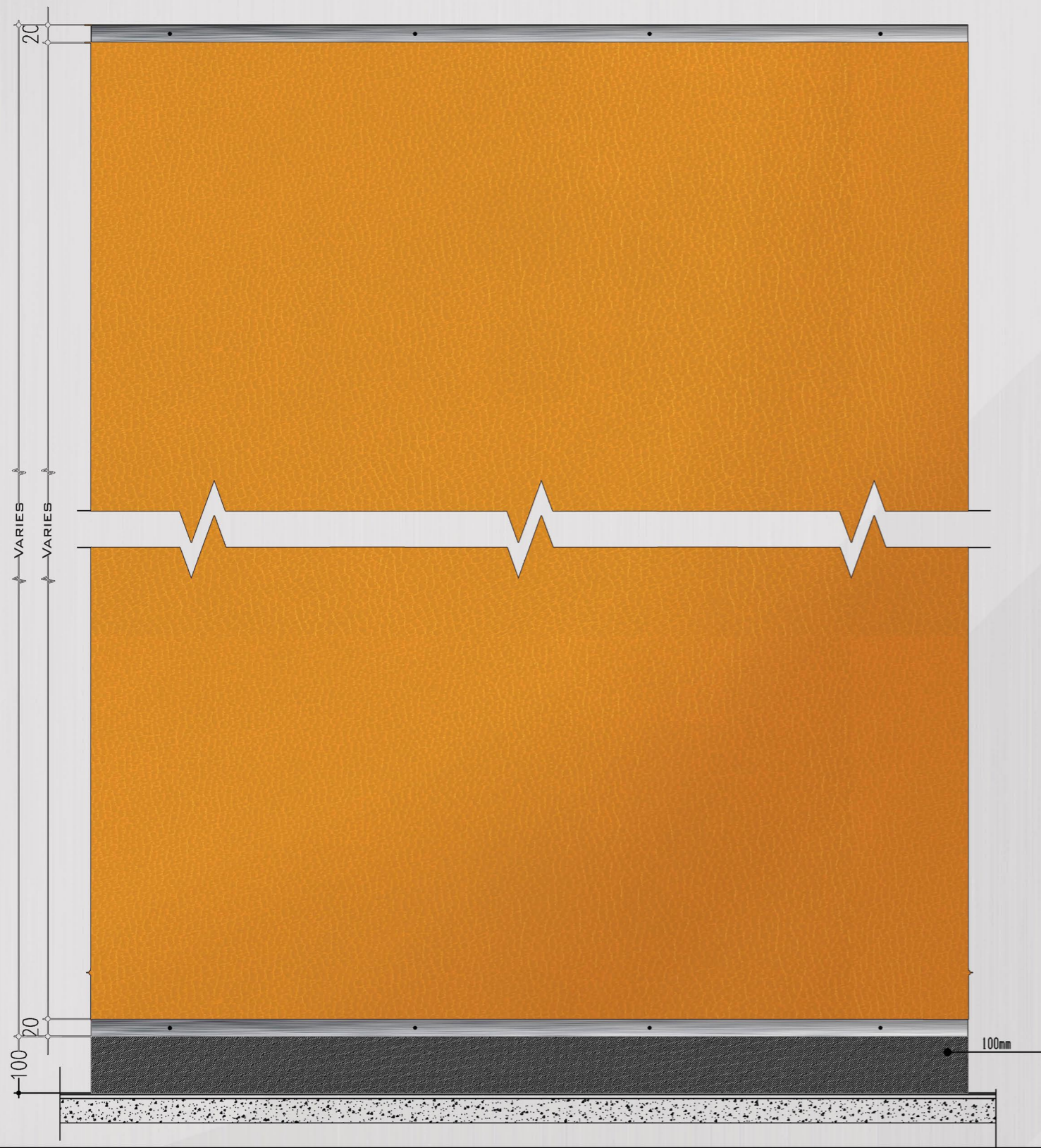
A 'Z' PROFILE ALUMINUM BRACKET AND A LONGITUDINAL PIECE OF VELCRO ARE FIXED ON THE WALL AND ON THE BACK OF THE PLYWOOD BASE. THE SYSTEM WILL SIMPLY REST ON THE Z PROFILE AND IS STABILIZED WITH THE VELCRO.



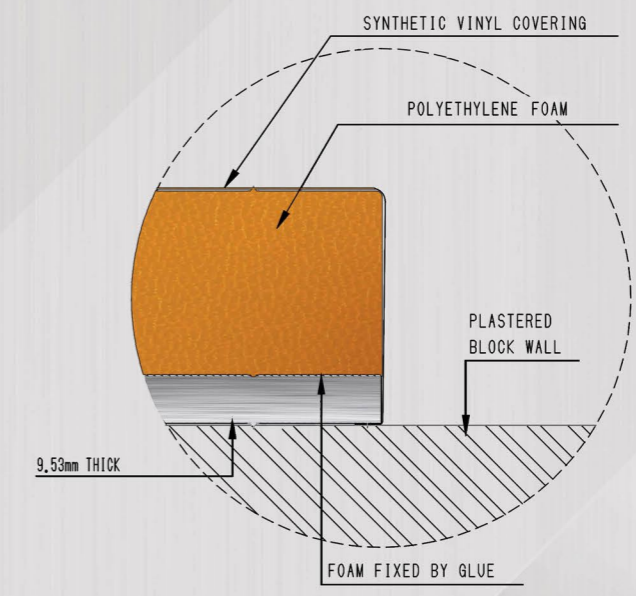


PROPAD



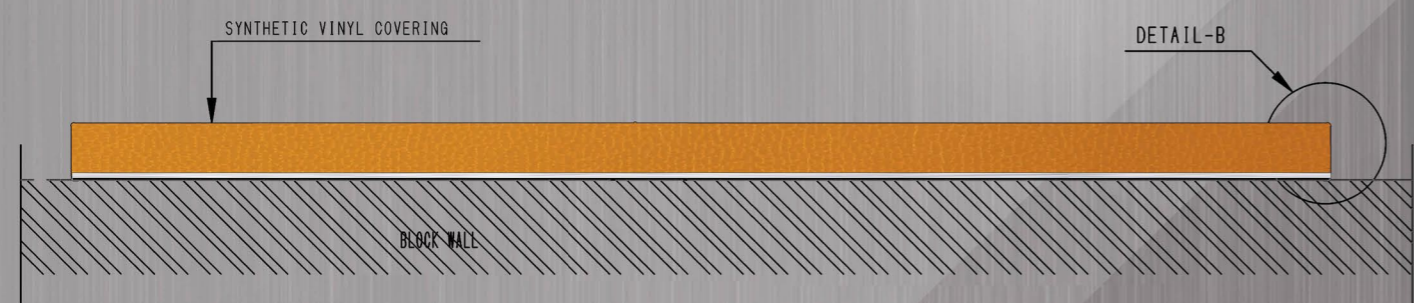


DETAIL-A



DETAIL-B

METHOD ONE
WALL PROTECTION PANELS



SPECIFICATION & CONSTRUCTION OF THE PANEL

BACKING IS MADE OF 9.53MM THICK PLYWOOD

PADDING IS MADE OF 30MM CROSLINKED FOAM 33KB/M³
OTHER DENSITIES AND THICKNESSES AVAILABLE UPON REQUEST

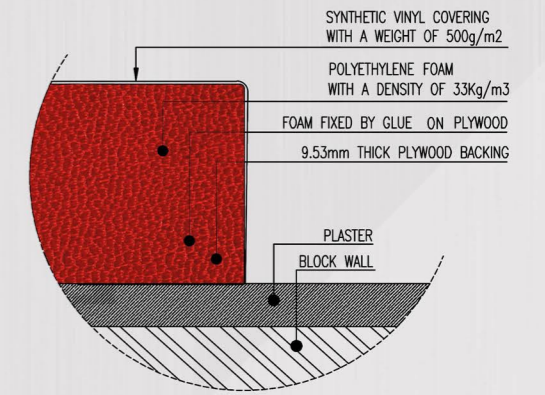
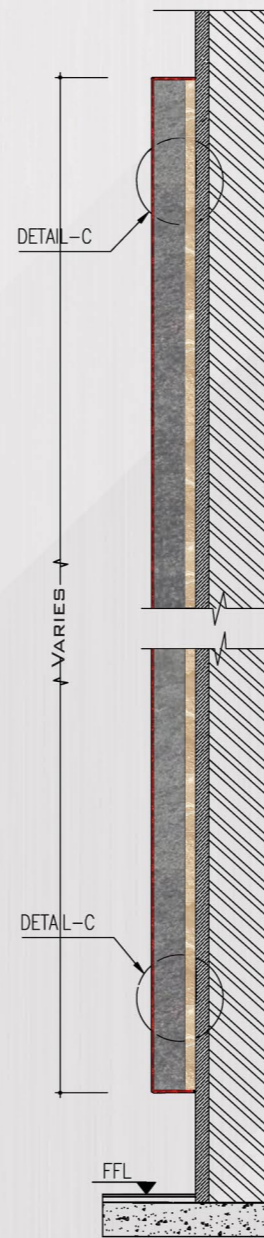
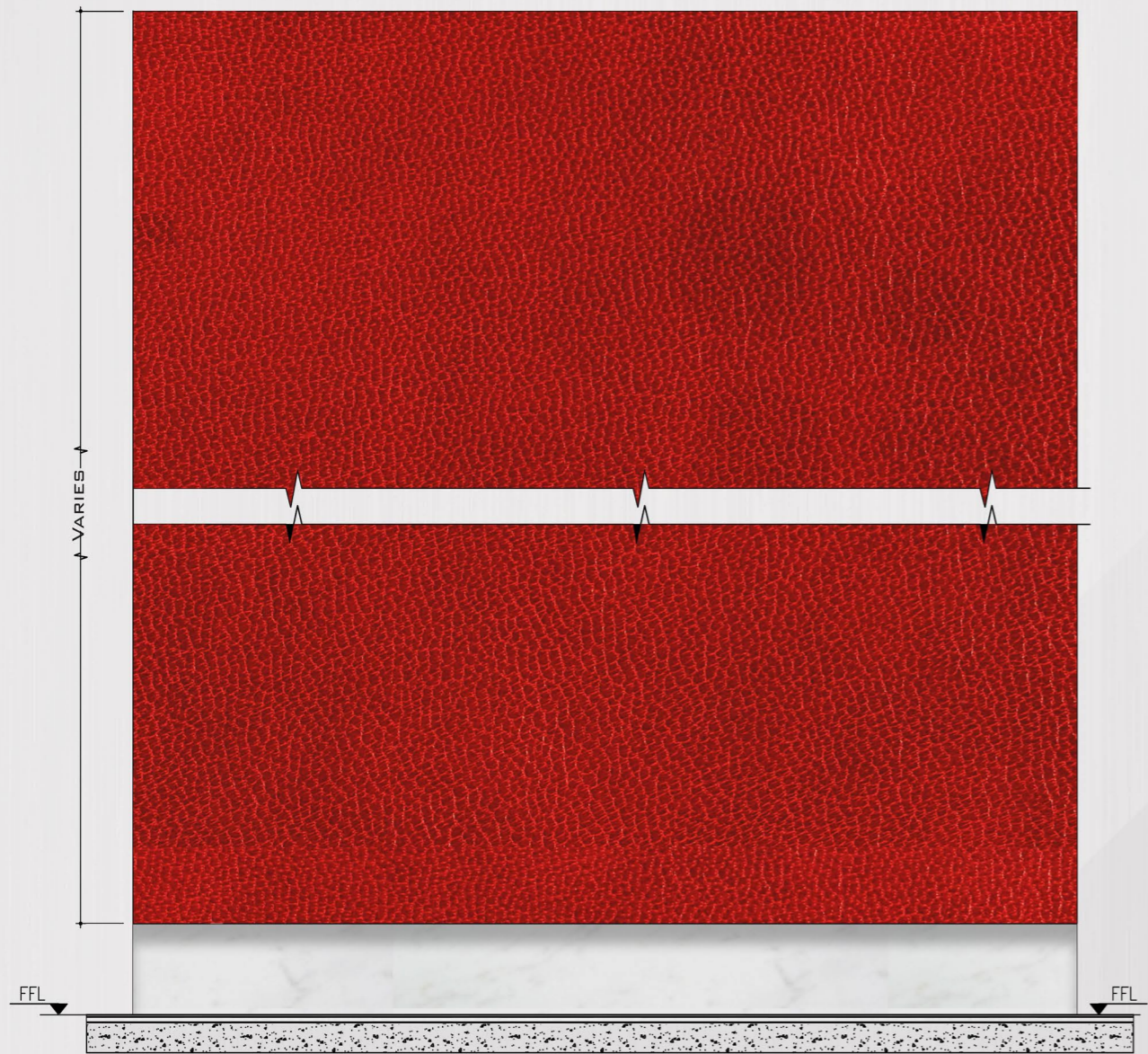
COVERING IS MADE OF SYNTHETIC VINYL 500G/M²

FRAME IS MADE OF ALUMINIUM PROFILE COVERING THE
TOP & BOTTOM SIDE OF THE WALLPAD

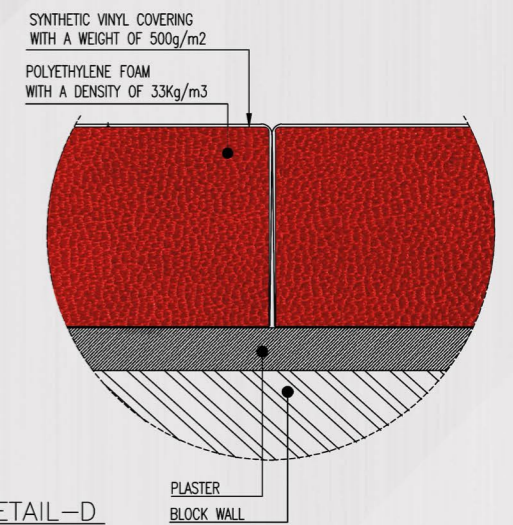
STANDARD DIMENSIONS ARE 1000MM(W) AND 2000MM(H)

ALUMINIUM Z PROFILE IS USED TO SUPPORT THE PADS

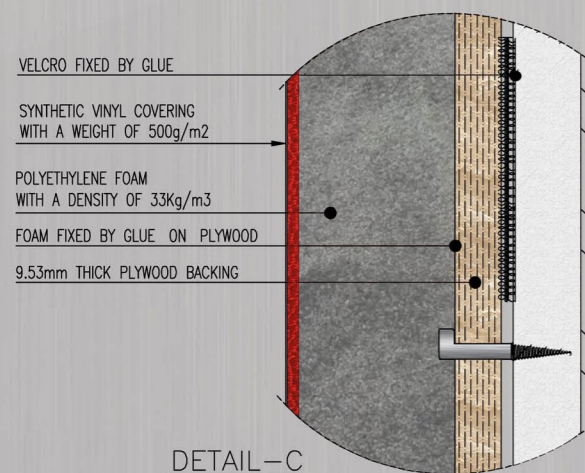
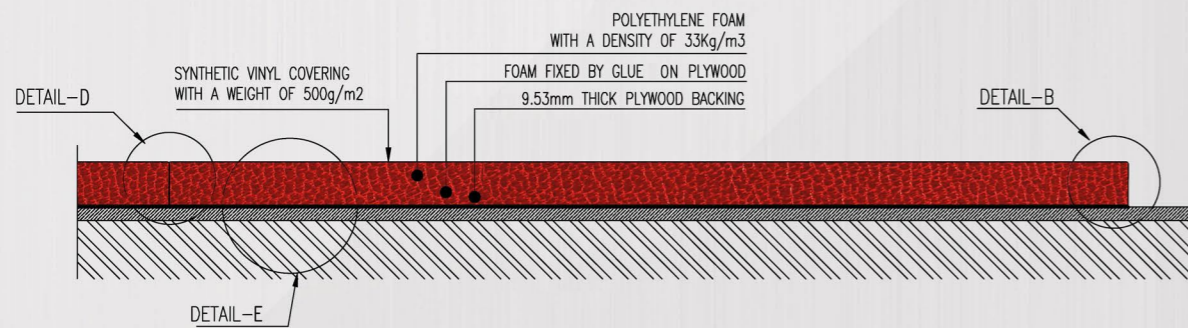
FIRE RETARDANT FOAM AND COVER AVAILABLE UPON REQUEST



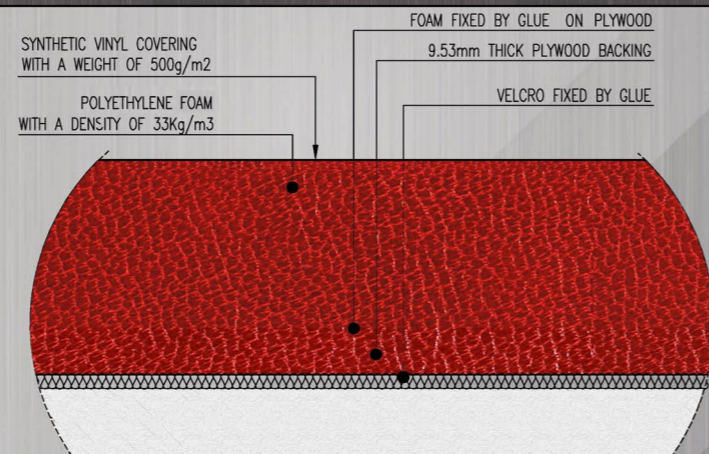
DETAIL-B



DETAIL-D



DETAIL-C



DETAIL-E

METHOD TWO WALL PROTECTION PANELS

SPECIFICATION & CONSTRUCTION OF THE PANEL

BACKING IS MADE OF 9.53MM THICK PLYWOOD

PADDING IS MADE OF 30MM CROSLINKED FOAM 33KB/M³

OTHER DENSITIES AND THICKNESSES AVAILABLE UPON REQUEST

COVERING IS MADE OF SYNTHETIC VINYL 500G/M²

FRAME IS NOT NEEDED, THE SYSTEM COMPLETELY HIDES

ALL FORMS OF FIXATIONS

STANDARD DIMENSIONS ARE 1000MM(W) AND 2000MM(H)

ALUMINIUM Z PROFILE IS USED TO SUPPORT THE PADS WITH VELCRO

CEMENT BOARD IN LIEU OF MDF IS AVAILABLE UPON REQUEST

TEL: +971 2 4483232, FAX: +971 2 4483236, P.O. Box: 44694, ABUDHABI
TEL: +971 4 3211032, FAX: +971 4 3211513, P.O. Box: 37151, DUBAI
UNITED ARAB EMIRATES

www.MBMAUH.AE

MBM@MBMAUH.AE

6 / 6 / 2016

MBM

Mediterranean Building Materials
مؤسسة المتوسط للمواد البناء

