





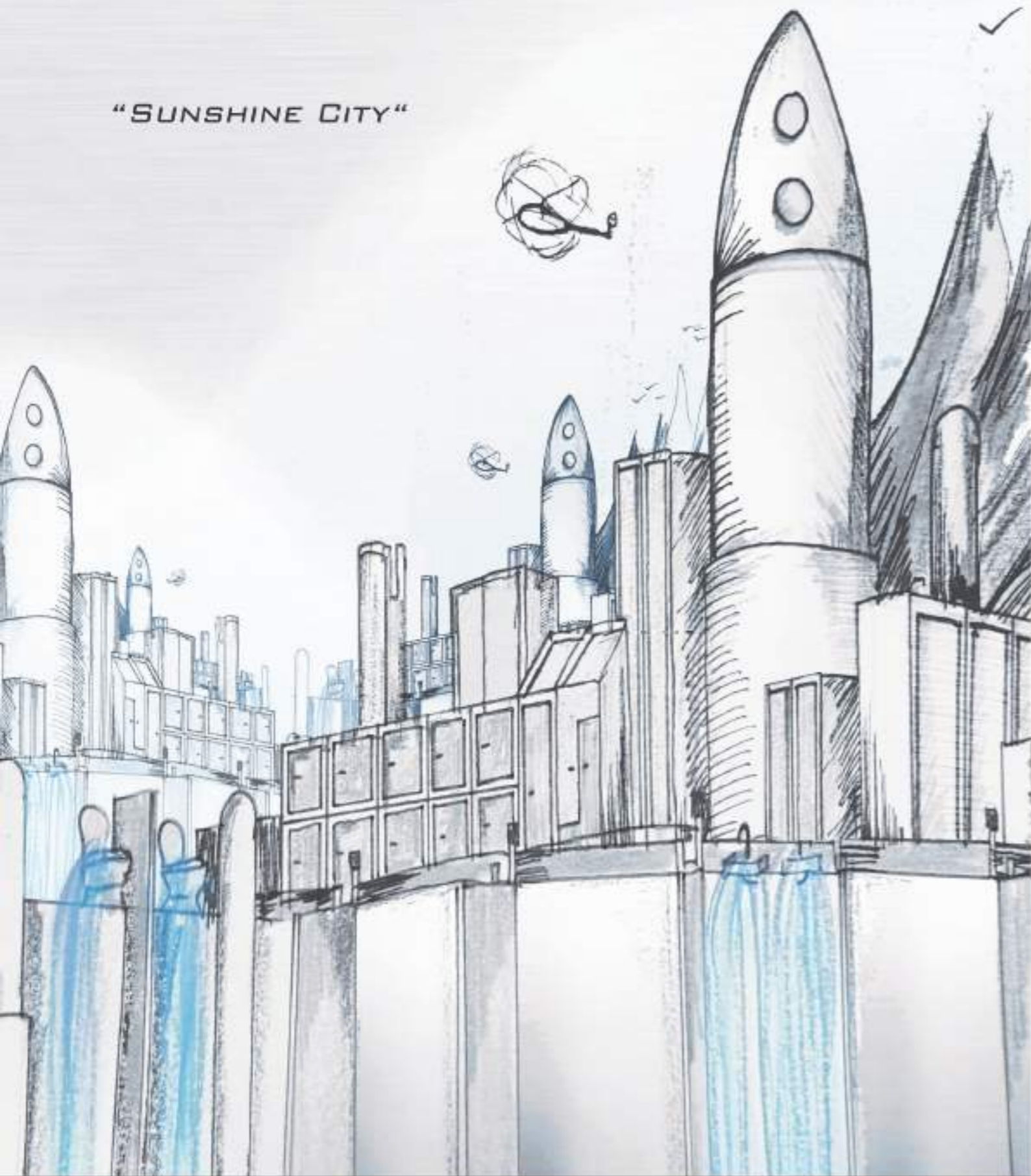
## APPENDIX

INTRODUCTION.....	4
REFERENCED PROJECTS.....	5
PRODUCTS FOR CUBICLES	
A. ELEGANCE.....	7
B. EMINENCE.....	11
C. ELITE.....	15
D. EXCELLENCE.....	19
LOCKERS & CUBICLES.....	23
CLADDING AND VANITY COUNTERS.....	29
CONTACT INFORMATION.....	31

MBM OFFICES

Mark Klemm  
9/24/2016

## "SUNSHINE CITY"



ESTABLISHED IN ABU DHABI, UAE IN 1992, MEDITERRANEAN BUILDING MATERIALS HAS BECOME EVER SINCE A KEY PLAYER AND A LEADER IN THE PRODUCTION, SUPPLY AND INSTALLATION OF SPECIALIZED CONSTRUCTION RELATED PRODUCTS. OVER THIS PERIOD OF TIME MBM HAS BEEN ASSOCIATED WITH WELL-ESTABLISHED MANUFACTURES ACROSS THE WORLD TO PROVIDE SUSTAINABLE SOLUTIONS FOR THE EVER GROWING MIDDLE EASTERN CONSTRUCTION INDUSTRY IN TERMS OF ARCHITECTURAL AND INFRASTRUCTURAL PRODUCTS LOCALLY AND REGIONALLY.

**SUNSHINE**, OUR BRAND FOR WASHROOM FACILITIES. WITH A DIVERSE SELECTION OF MATERIALS, OFFERS A WIDE RANGE OF TOILET, SHOWER, AND CHANGING ROOM CUBICLES, LOCKERS, BENCHES, EASY TO ACCESS CLADDING AND VANITY COUNTERS.

SUNSHINE RANGE OF WASHROOM SOLUTIONS IS MADE OF HIGH PRESSURE LAMINATE, COMMONLY KNOWN AS **HPL**. A STRONG HOMOGENOUS CORE MADE OF MULTIPLE LAYERS OF QUALITY KRAFT PAPER FUSED TOGETHER WITH RESIN UNDER HEAT AND PRESSURE. THE HOMOGENOUS CORE IS COVERED WITH COMPACT LAMINATE ON BOTH SIDES AND IS TESTED ACCORDING TO EN438:1991. **HPL** PANELS ARE KNOWN FOR THEIR DIMENSIONAL STABILITY AND STRUCTURAL INTEGRITY. THEY ARE ALSO RESISTANCE TO DAMAGE, SCRATCH, WATER, COMMON CHEMICALS AND CLEANING MATERIAL.

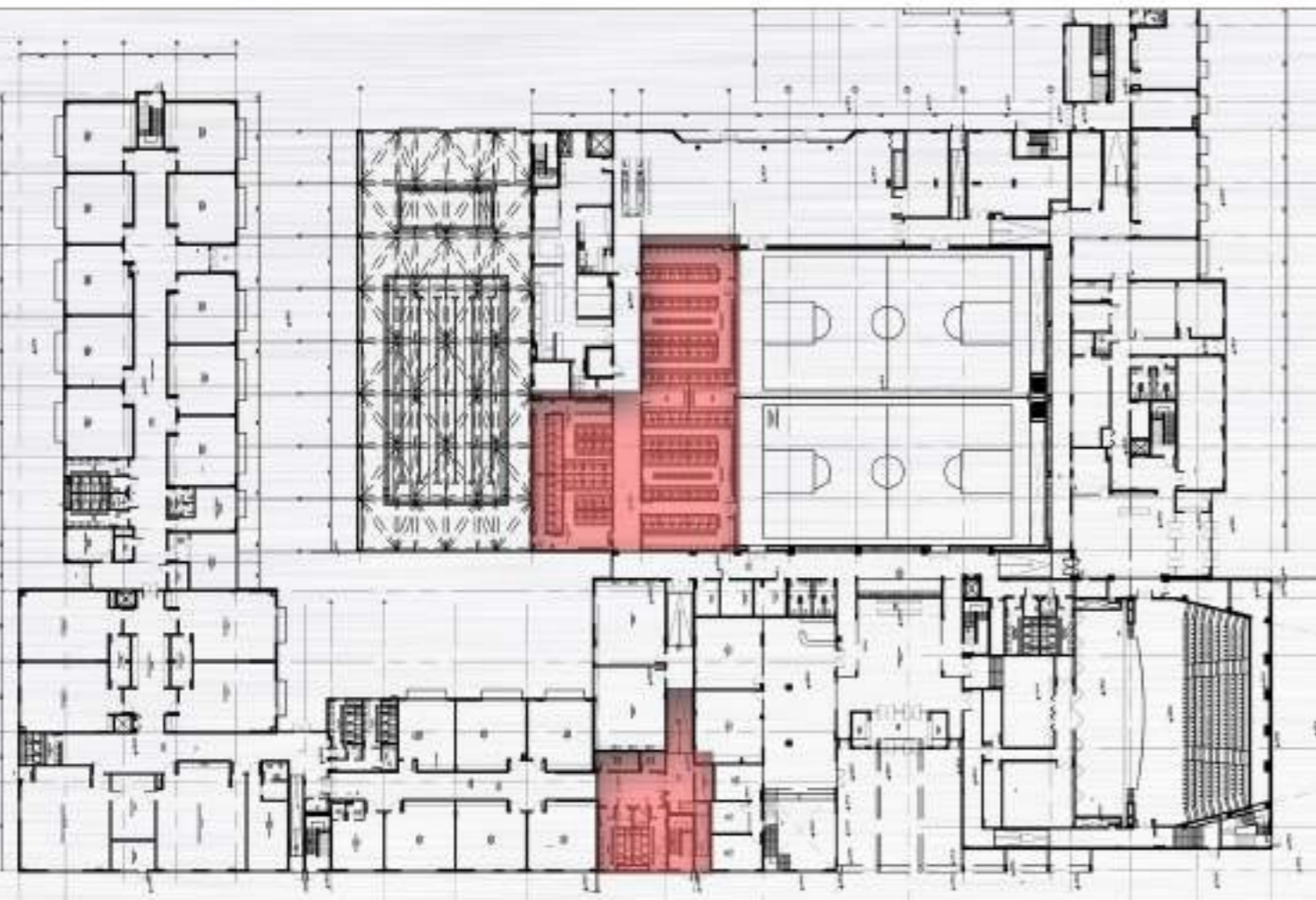
DUE TO THEIR CHARACTERISTICS, SUNSHINE PRODUCTS ARE CONSIDERED TO BE AMONG THE MOST DURABLE, HYGIENIC AND COST EFFICIENT SOLUTIONS. THEY ARE IDEAL FOR USE IN HIGH TRAFFIC AND HUMID/WET AREAS SUCH AS HEALTH CLUBS, SWIMMING BATHS, SCHOOLS, CAMPS, HOTELS, COMMERCIAL BUILDINGS AND SHOPPING CENTERS. WE OFFER OUR STANDARD RANGE OF PRODUCTS ELEGANCE, ELITE, EMINENCE, AND RAYS AS WELL AS CUSTOM MADE PRODUCTS KNOWN AS EXCELLENCE TO SUIT ALL DESIRED REQUIREMENTS.

SUNSHINE OFFERS A WIDE RANGE OF FINISHING COLORS AND TEXTURES INCLUDING STANDARD COLORS AND SPECIAL FINISHES.

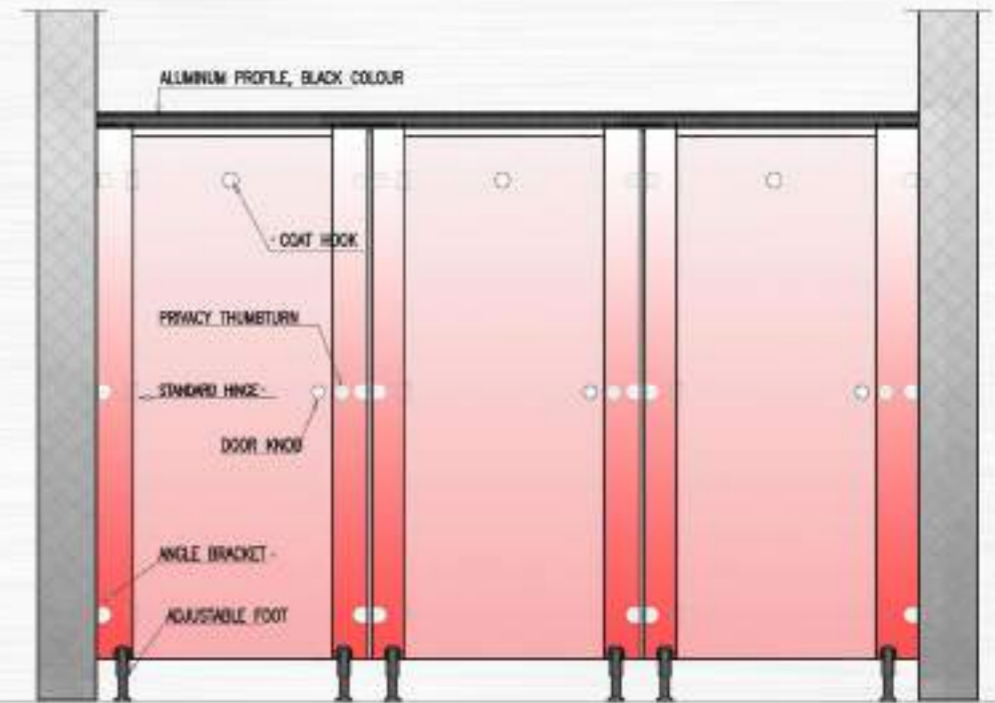


REFERENCED PROJECTS

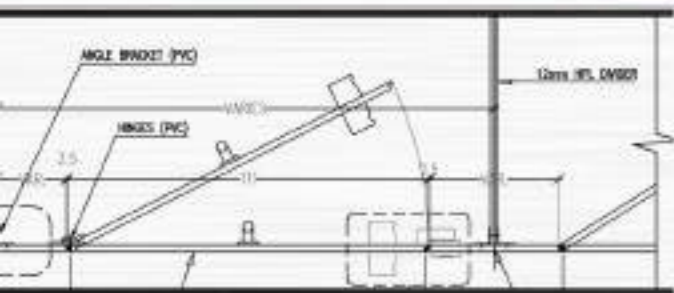




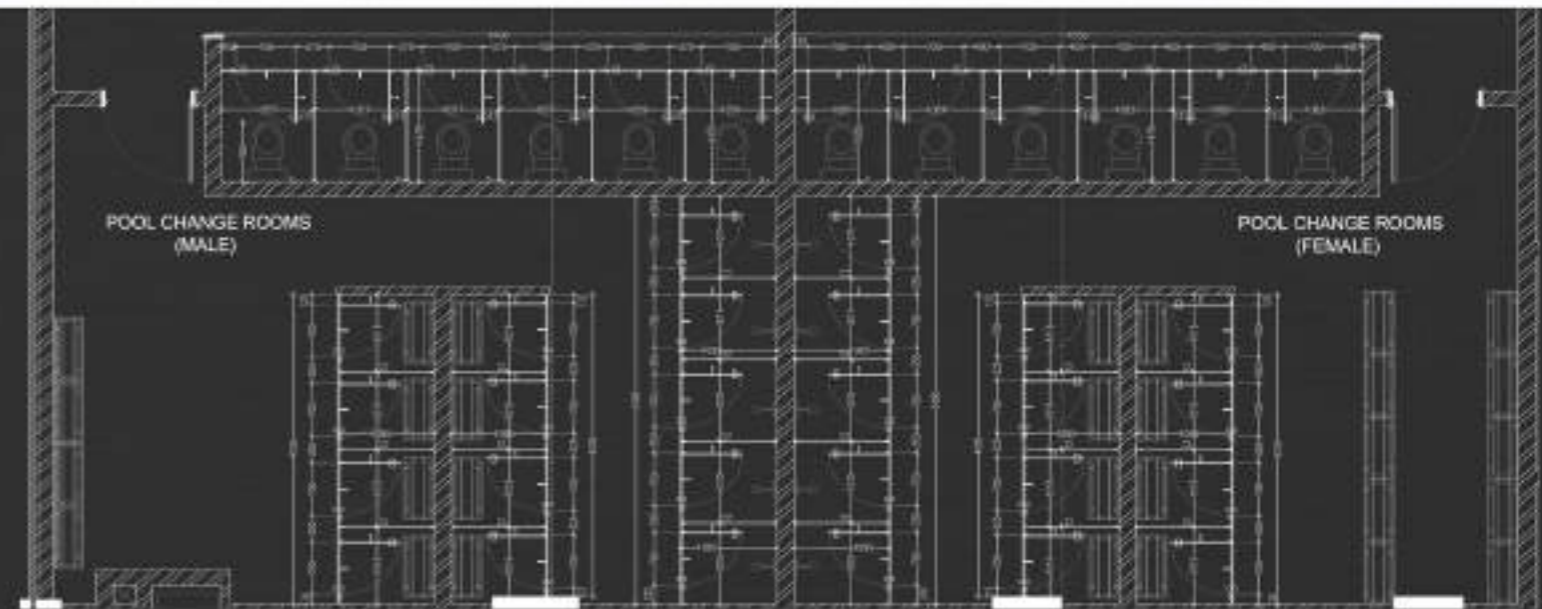
SIMPLE AND CHIQUE, OUR ELEGANCE RANGE COMPRISES OF CUBICLES MADE FROM HPL PANELS USING BLACK PVC ACCESSORIES. IT IS A PERFECTLY ECONOMICAL SOLUTION FOR ANY TYPE OF FACILITY.



## CUBICLES ELEGANCE



PVC ACCESSORIES





**PERFORMANCE & PROPERTIES :**

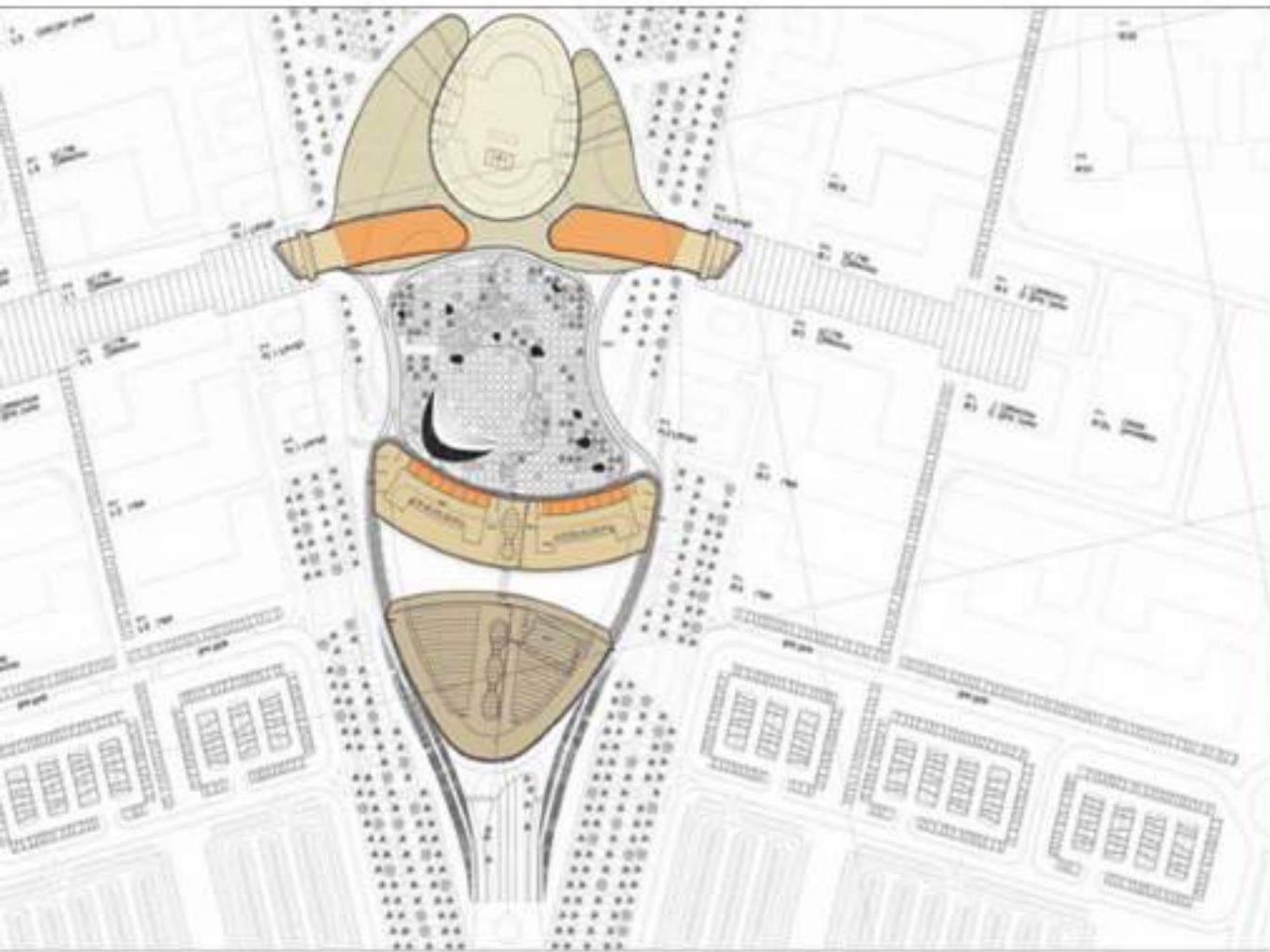
- SHOCK, SCRATCH AND WEAR RESISTANCE.
- RESISTANCE TO COMMON CLEANING CHEMICALS.
- RESISTANCE TO HUMIDITY.
- NON POROUS, NO MOLD OR BACTERIA FORMATION.
- EASY TO MAINTAIN.

**EMINENCE CUBICLE DIMENSIONS :**

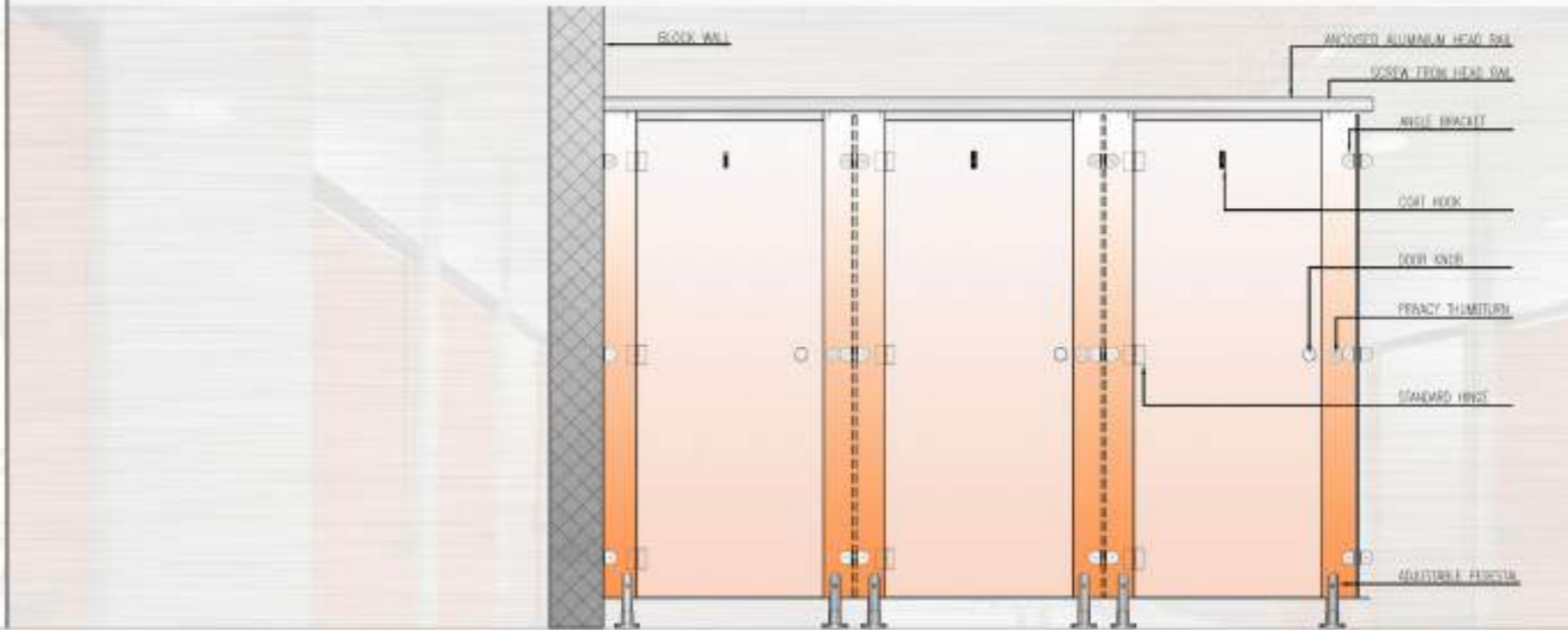
HPL THICKNESS	12MM/13MM
STANDARD CUBICLE HEIGHT	1970 - 2005MM
STANDARD CUBICLE WIDTH	850MM - 1000MM
STANDARD CUBICLE DEPTH	1500MM - 1800MM
STANDARD BASE HEIGHT	115MM - 150MM

CUBICLES  
**ELEGANCE**

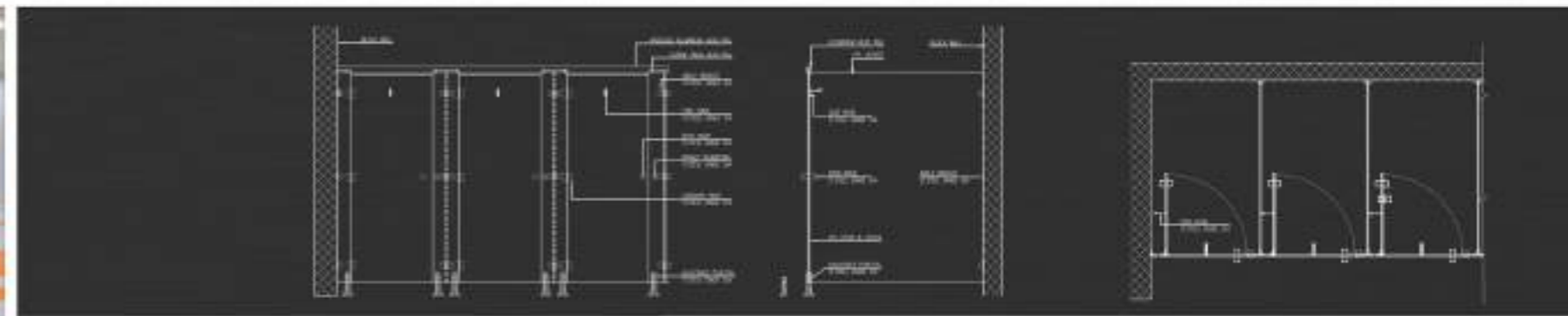




DISTINGUISHED WITH STAINLESS STEEL ACCESSORIES OF GRADE 304, **EMINENCE** IS USED MAINLY IN NEW AND REDEVELOPED COMMERCIAL AREAS, HOTELS AND SCHOOLS. CUSTOM ALTERATIONS CAN BE ACHIEVED.



CUBICLES  
**EMINENCE**





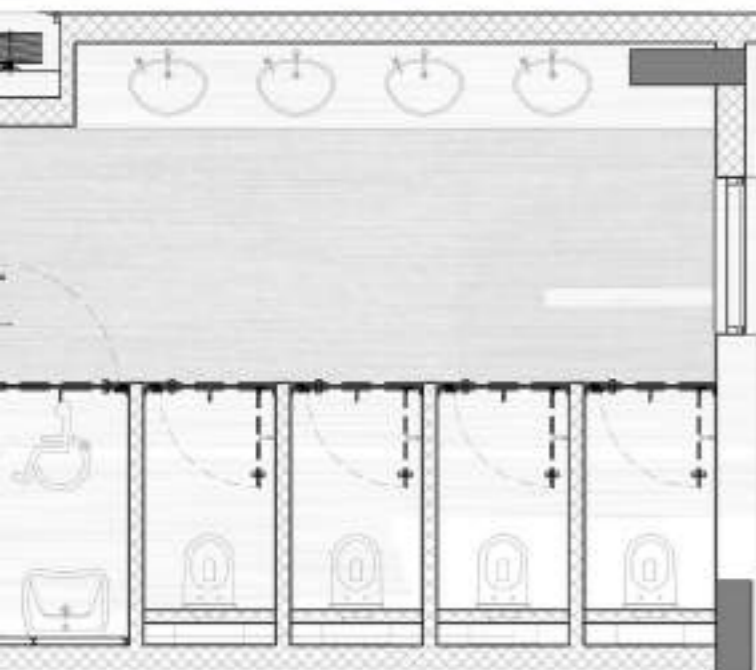
**PERFORMANCE & PROPERTIES :**

- SHOCK, SCRATCH AND WEAR RESISTANCE.
- RESISTANCE TO COMMON CLEANING CHEMICALS.
- RESISTANCE TO HUMIDITY.
- NON POROUS, NO MOLD OR BACTERIA FORMATION.
- EASY TO MAINTAIN.

**EMINENCE CUBICLE DIMENSIONS :**

HPL THICKNESS	12MM/13MM
STANDARD CUBICLE HEIGHT	1955 - 1980MM
STANDARD CUBICLE WIDTH	850MM / 1000MM
STANDARD CUBICLE DEPTH	1500 - 1800MM
STANDARD BASE HEIGHT	100 - 125MM

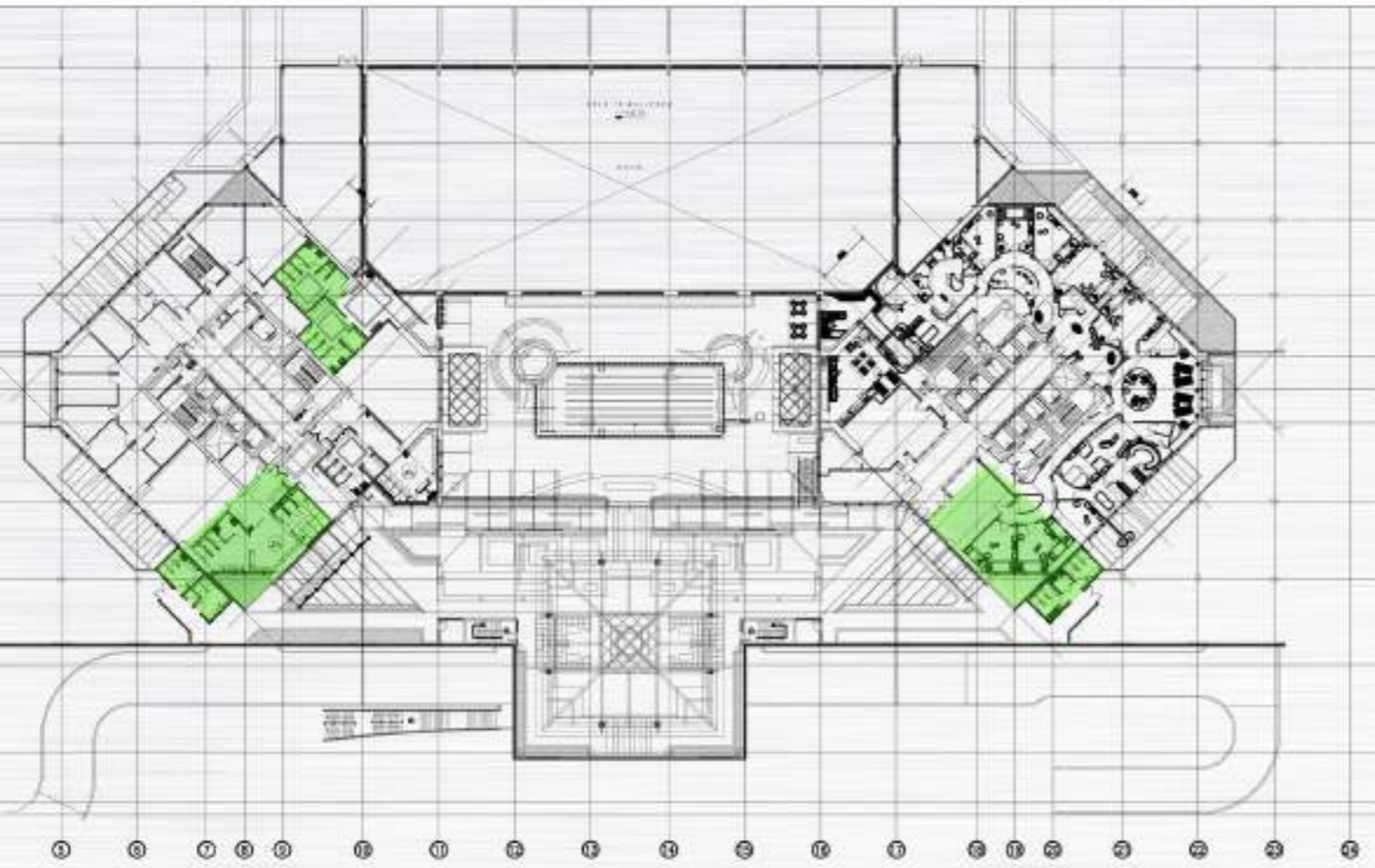
CUBICLES  
**EMINENCE**



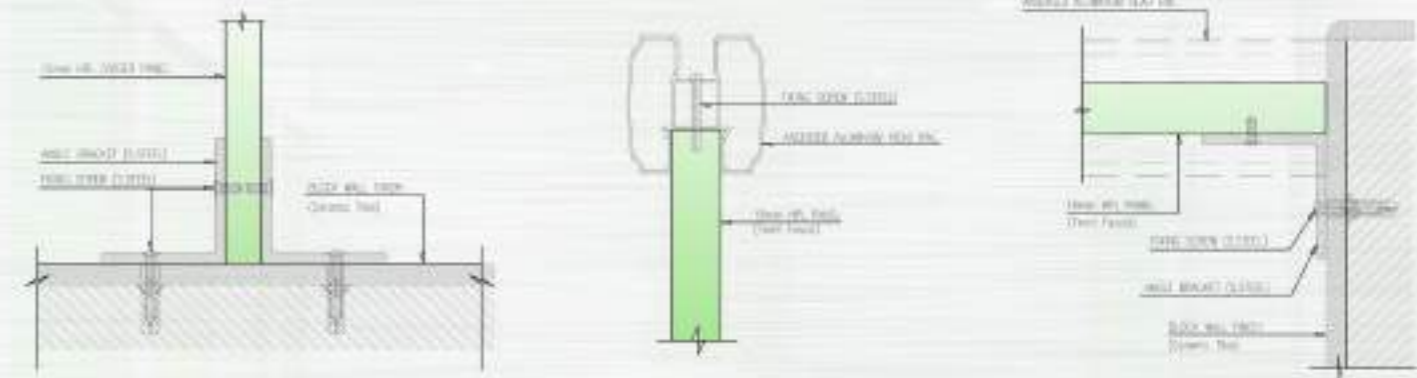
**CONSTRUCTION :**

TOILET CUBICLES ARE MADE OF VARYING THICK SOLID GRADE COMPACT LAMINATE PANELS. DOORS AND ARE SUPPORTED BY STAINLESS STEEL HARDWARE FIXED TO THE BOTTOM, MIDDLE AND TOP REGION OF THE DOOR. DOORS ARE EQUIPPED WITH A STAINLESS STEEL COAT HOOK AND A LOCK. DIVIDERS ARE CONNECTED TO THE BACK WALL BY STAINLESS STEEL BRACKETS. FOR MAXIMUM STABILITY AND ALIGNMENT, A HEAD RAIL IS APPLIED TO THE CUBICLE SYSTEM.

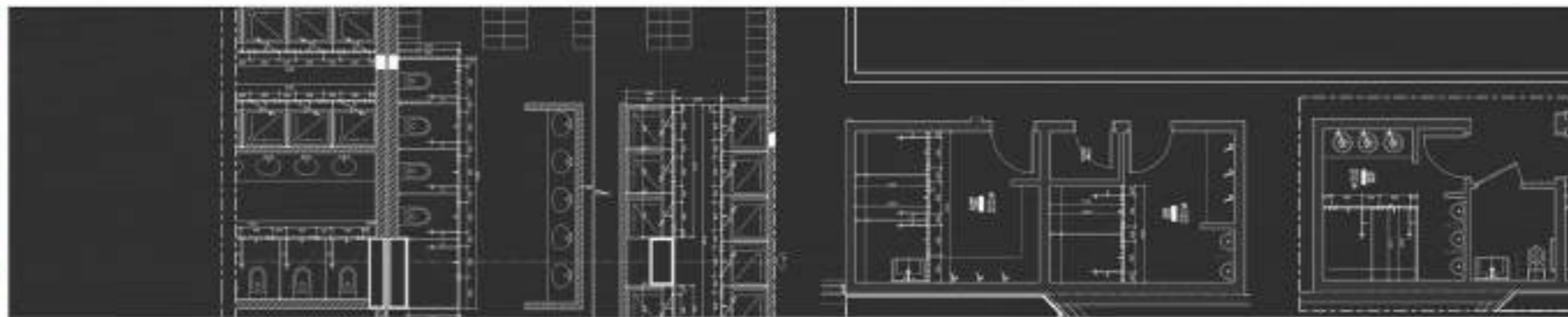




DISTINGUISHED WITH STAINLESS STEEL ACCESSORIES OF GRADE 316, THE ELITE RANGE IS USED MAINLY IN NEW AND REDEVELOPED AREAS LIKE UNIVERSITIES, HOTELS AND SPAS. CUSTOMIZATION IS AVAILABLE UPON REQUEST.



## CUBICLES ELITE





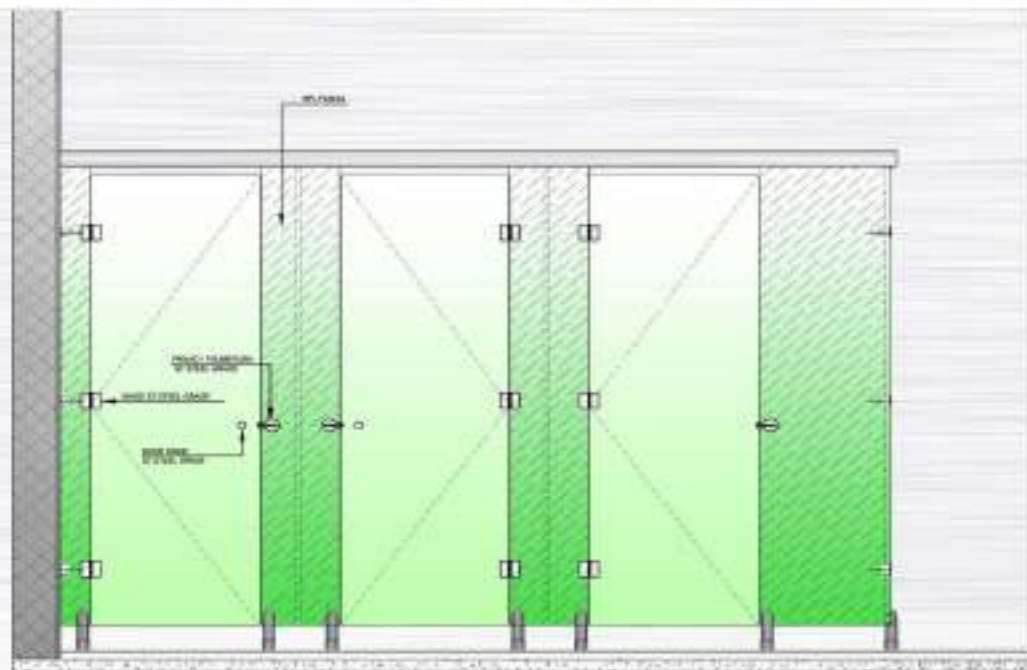
**PERFORMANCE & PROPERTIES :**

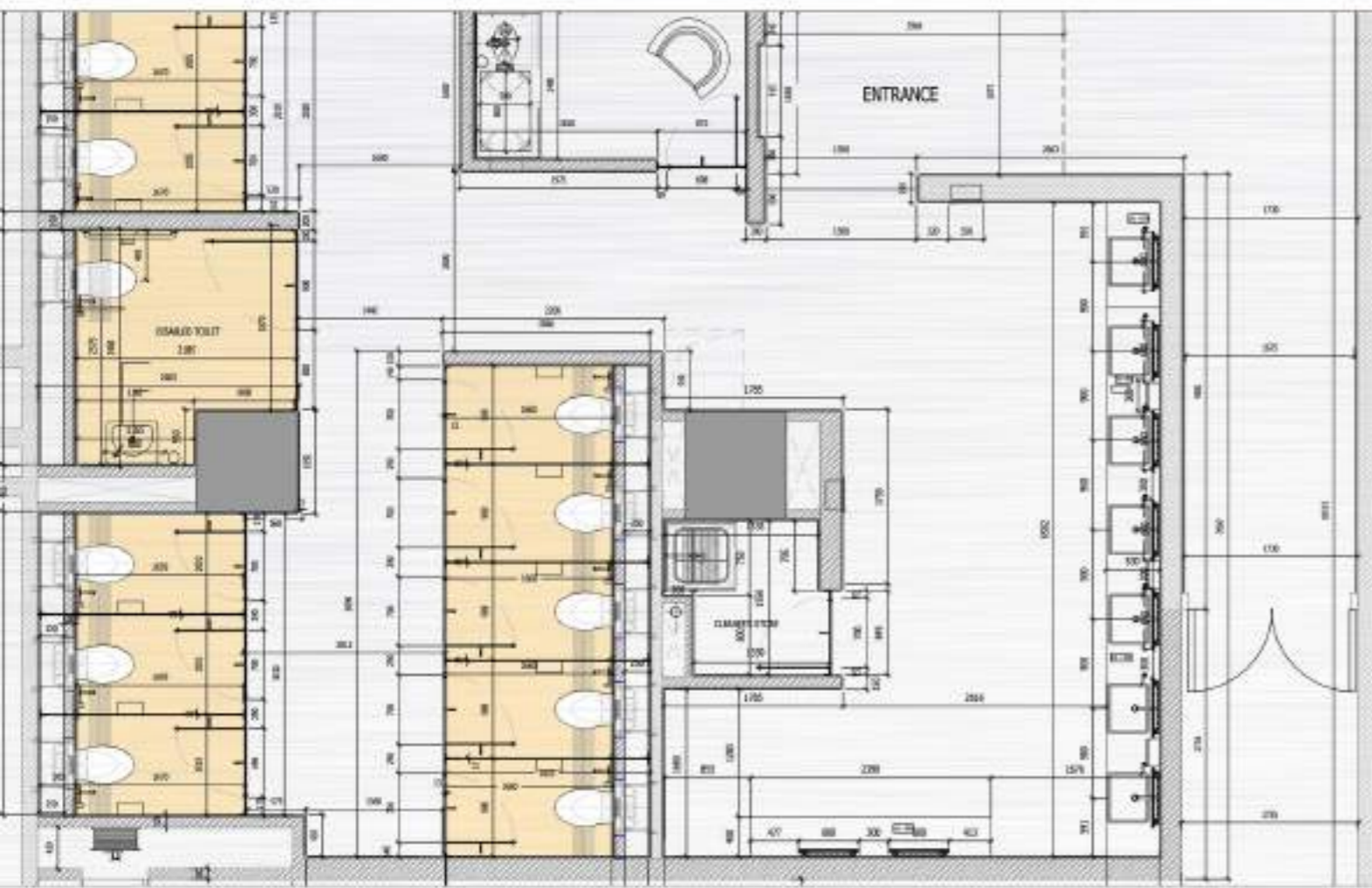
- SHOCK, SCRATCH AND WEAR RESISTANCE.
- RESISTANCE TO COMMON CLEANING CHEMICALS.
- RESISTANCE TO HUMIDITY.
- NON POROUS, NO MOLD OR BACTERIA FORMATION.
- EASY TO MAINTAIN.

**EMINENCE CUBICLE DIMENSIONS :**

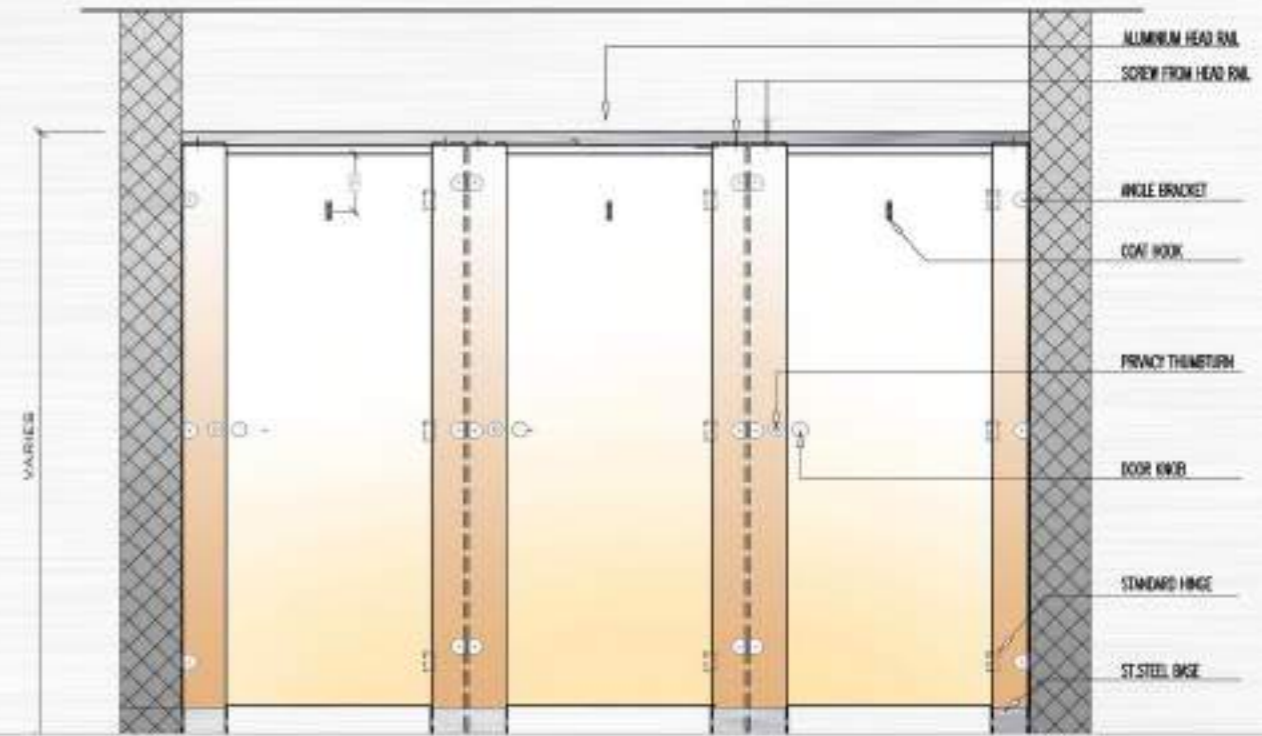
HPL THICKNESS	12MM/13MM
STANDARD CUBICLE HEIGHT	1955 - 1995MM
STANDARD CUBICLE WIDTH	850MM / 1000MM
STANDARD CUBICLE DEPTH	1500 - 1800MM
STANDARD BASE HEIGHT	100 - 140MM

**CUBICLES  
ELITE**

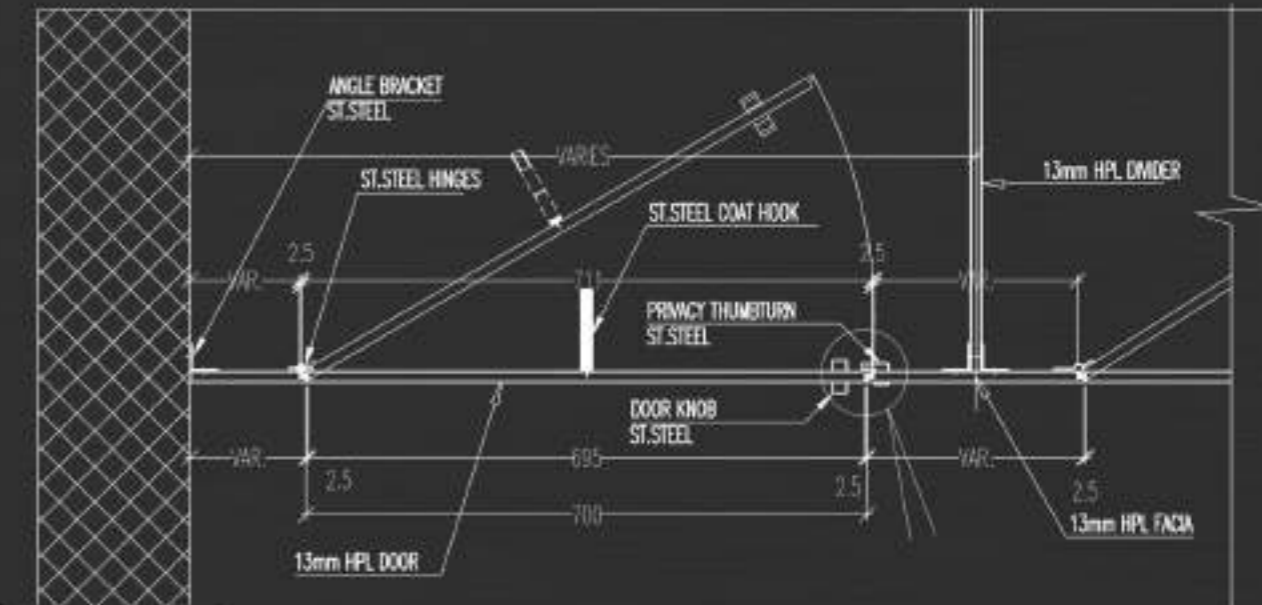




EXCELLENCE COVERS OUR RANGE OF CUSTOM DESIGNS FOR TOILET CUBICLES, WITH VARYING HEIGHTS AND STAINLESS STEEL ACCESSORIES THE CLIENT DESIRES. THIS OPTION IS BEST FIT FOR RELATIVELY HIGH END PUBLIC RESTROOM.



## CUBICLES EXCELLENCE





**PERFORMANCE & PROPERTIES :**

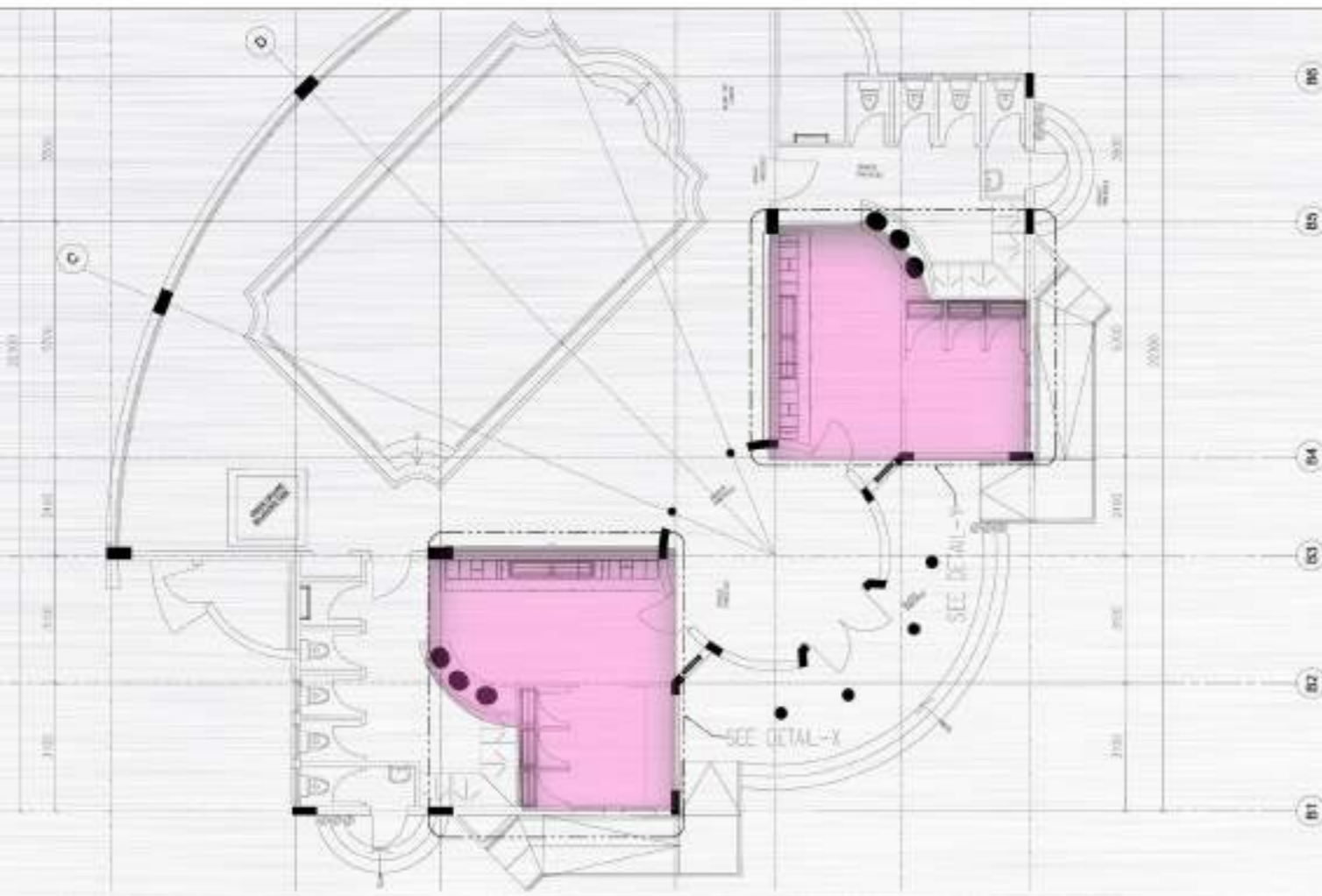
- SHOCK, SCRATCH AND WEAR RESISTANCE.
- RESISTANCE TO COMMON CLEANING CHEMICALS.
- RESISTANCE TO HUMIDITY.
- NON POROUS, NO MOLD OR BACTERIA FORMATION.
- EASY TO MAINTAIN.

**EMINENCE CUBICLE DIMENSIONS :**

HPL THICKNESS	12MM/13MM
STANDARD CUBICLE HEIGHT	CUSTOM
STANDARD CUBICLE WIDTH	CUSTOM
STANDARD CUBICLE DEPTH	CUSTOM
STANDARD BASE HEIGHT	100MM MINIMUM

CUBICLES  
**EXCELLENCE**



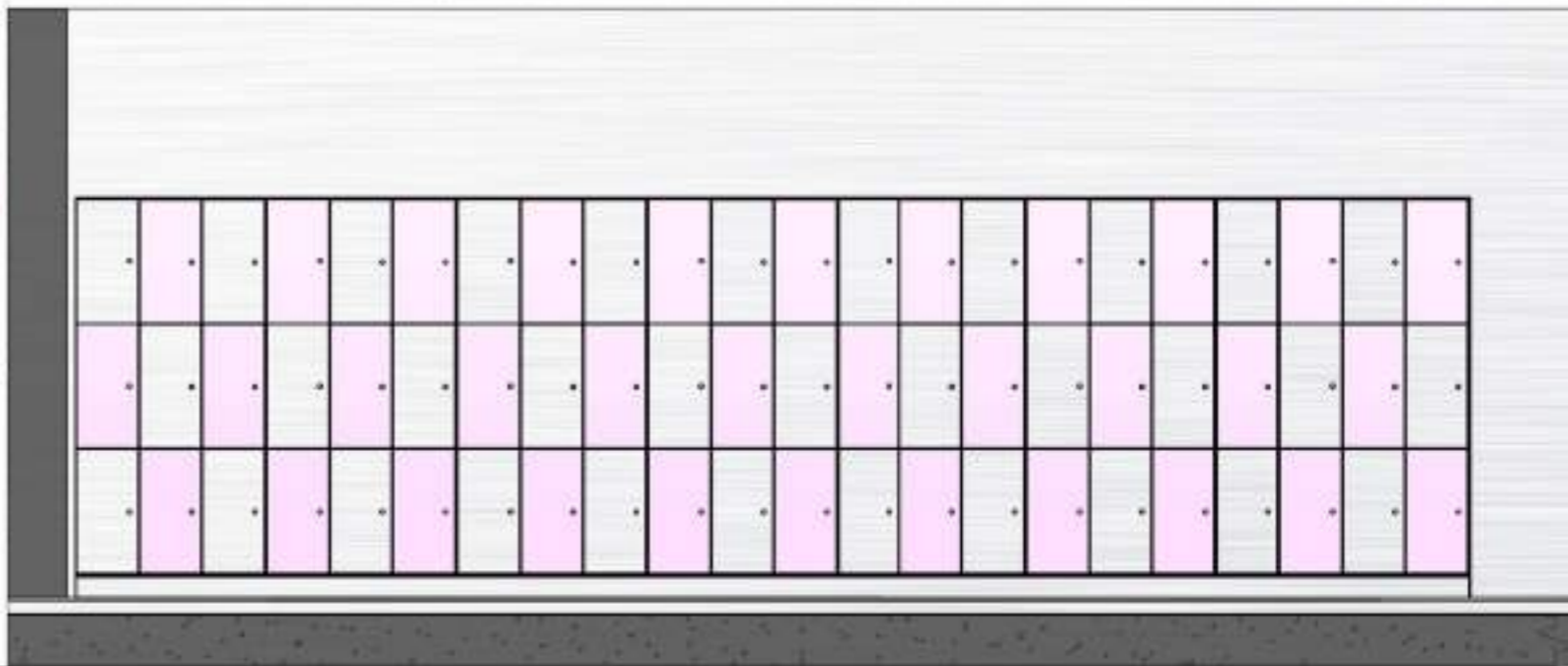


06  
05  
04  
03  
02  
01

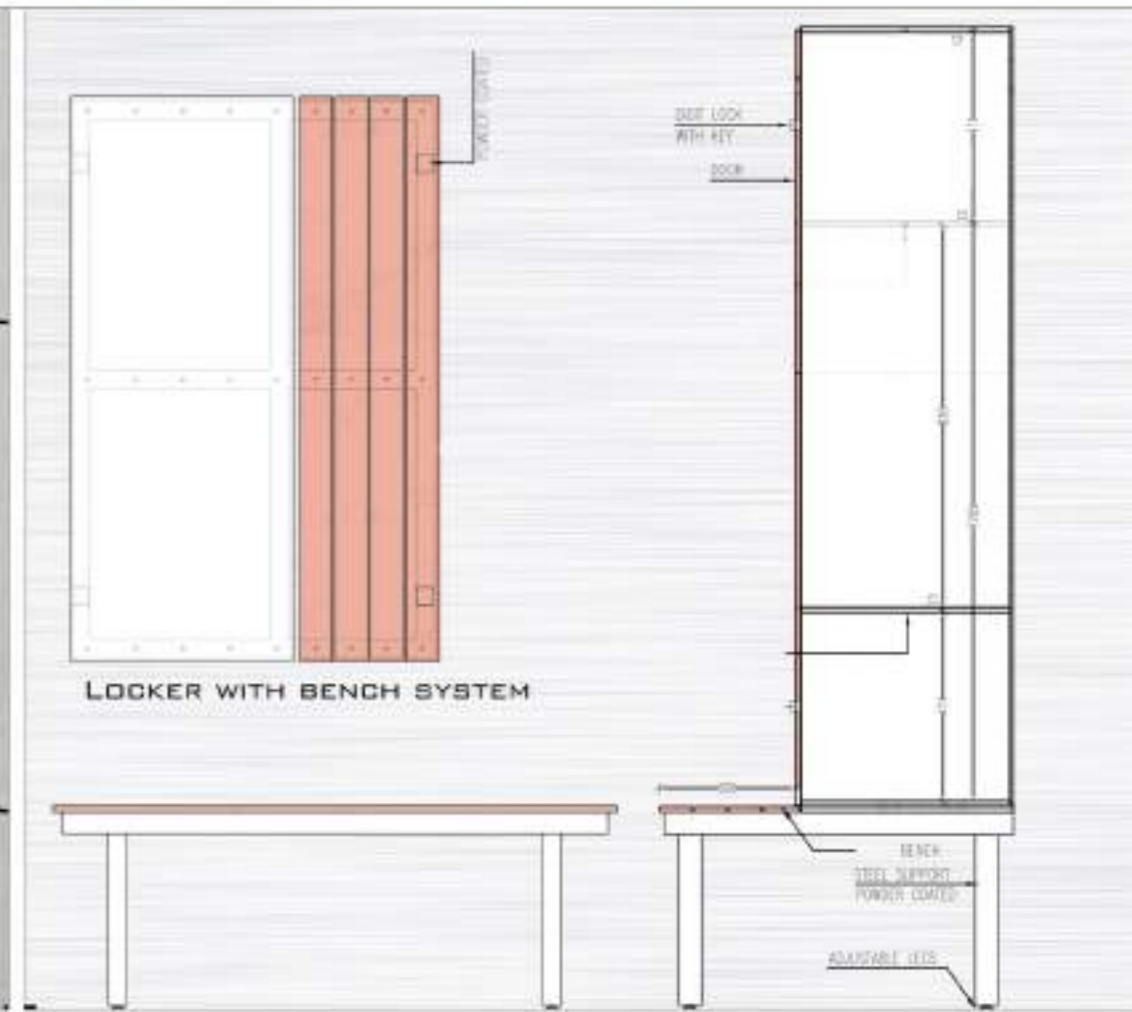
UNLIKE METALLIC AND WOODEN LOCKERS,  **RAYS**  LOCKERS DO NOT RUST OR DISINTEGRATE. THEY ARE SPECIALLY DESIGNED FOR USE IN HUMID AND COMMUNAL AREAS SUCH AS SPORT CENTERS, STAFF ROOMS, LEISURE AND FITNESS CENTERS, HOTELS AND SCHOOLS.



LOCKERS  
 **RAYS**

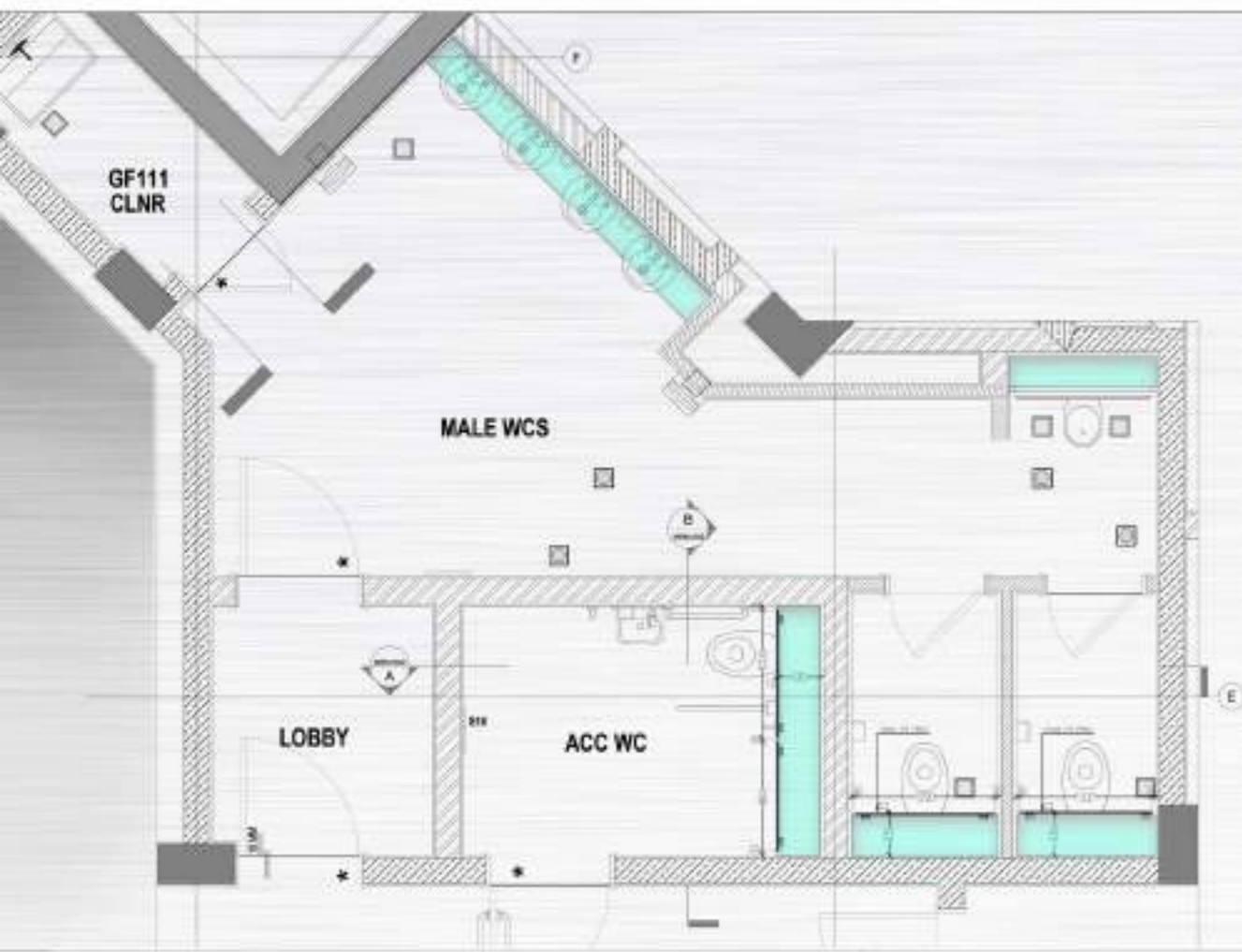




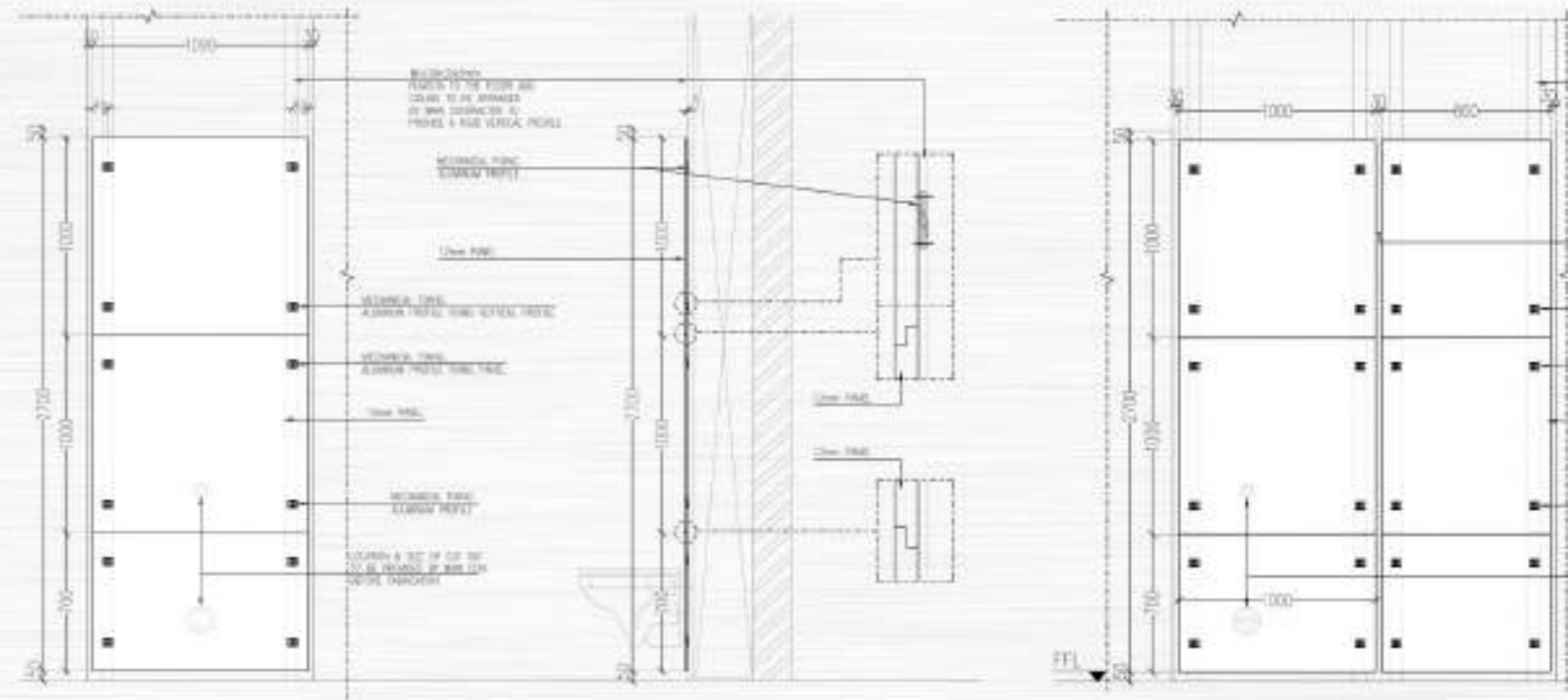


## LOCKERS RAYS



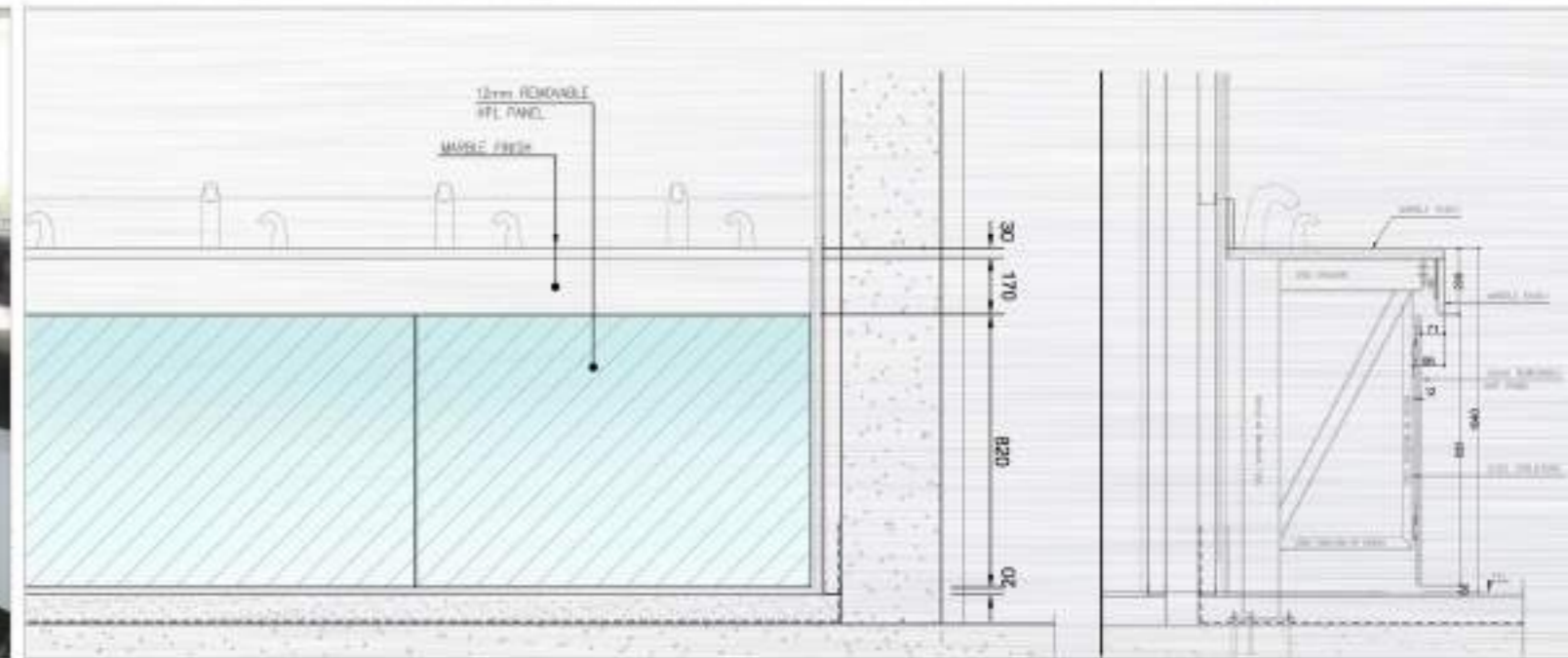


HIGHLY DURABLE, WATER AND IMPACT RESISTANT, OUR TOILET FLUSH TANK CLADDING, VANITY COUNTERS AND FASCIA PANELS ARE MADE OF HPL, MOUNTER ON ALUMINUM PROFILES. THE SYSTEM IS RIGID AND FLEXIBLE TO REMOVE FOR MAINTENANCE, MAKING IT A PERFECT SOLUTION FOR HIGHLY CONGESTED AREAS.



## COUNTERS

# CLADDING & VANITY







TEL: +971 2 4483232, FAX: +971 2 4483236, P.O. BOX: 44694, ABUDHABI

TEL: +971 4 3211032, FAX: +971 4 3211513, P.O. BOX: 37151, DUBAI

UNITED ARAB EMIRATES

02/06/2016

[WWW.MBMAUH.AE](http://WWW.MBMAUH.AE)

[MBM@MBMAUH.AE](mailto:MBM@MBMAUH.AE)

**MBM**

Mediterranean Building Materials

مؤسسة المبنى للمواد البناء