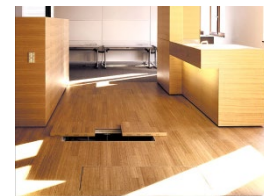
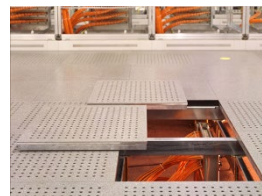
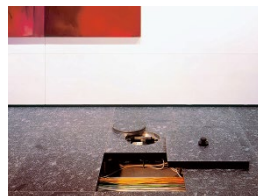
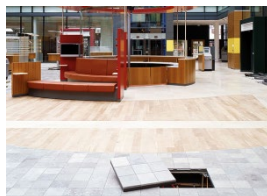


LIST OF REFERENCES BY MBM

RAISED FLOOR



RAISED FLOOR- REFERENCES

PROJECT NAME	CLIENT	CONTRACTOR	MANUFACTURER	YEAR
AL AIN GAS TURBINE HOUSE	ABU DHABI WATER & ELECTRICITY DEPT	TARGET ENGG. CONST. CO.	UNIFLAIR	1993
ABU DHABI GAS TURBINE HOUSE	ABU DHABI WATER & ELECTRICITY DEPT	TARGET ENGG. CONST. CO.	UNIFLAIR	1993
MUSSAFAH OFFSHORE	ADDCAP	COSTAIN ENGG. & CONST.	UNIFLAIR	1994
LNG PLANT, DAS ISLAND	ADGAS	C.C.I.C.	UNIFLAIR	1994
RENOVATION OF VILLA IN ABU DHABI	PRIVATE	POLENSKY & ZOELLINER	UNIFLAIR	1994
BLDG. FOR MR. HATHBOUR AL RUMAITHI	D.S.S.C.B.	RANYA CONTG. CO.	UNIFLAIR	1994
MIRFA GAS PIPELINE	ADCO	DODSAL PRIVATE LTD.	UNIFLAIR	1995
ABU DHABI INT'L AIRPORT	ABU DHABI DUTY FREE	DECO EMIRATES	UNIFLAIR	1995
ABU DHABI INT'L AIRPORT, EXT. TO TRANSIT HOTEL	ABU DHABI DUTY FREE	DECO EMIRATES	UNIFLAIR	1995
GA MUBARRAZ ISLAND	ADNOC	TARGET ENGG. CONST.	UNIFLAIR	1995
RAS AL KHAIMAH CEMENT FACTORY	RAS AL KHAIMAH CEMENT	COSTAIN ENGG. & CONST.	UNIFLAIR	1995
RENOVATION OF COMPLEX IN ABU DHABI	MINISTRY OF INTERIOR	AL MANSOURI 3 B	UNIFLAIR	1995

RAISED FLOOR- REFERENCES

PROJECT NAME	CLIENT	CONTRACTOR	MANUFACTURER	YEAR
W.E.D. GAS TURBINE PACKAGE AT AUH & AL AIN	MARUBENI CORPORATION	U.T.S. KENT	UNIFLAIR	1995
ETISALAT TELECOM. BLDG. AT BARAHA, DUBAI	ETISALAT	UNITY CONTG. CO.	UNIFLAIR	1995
ETISALAT TELECOM. BLDG.AT SHJ. IND. AREA	ETISALAT	UNITY CONTG. CO.	UNIFLAIR	1995
NATIONAL BANK OF ABU DHABI	NATIONAL BANK OF ABU DHABI	A.C.C.	UNIFLAIR	1995
ETISALAT TELECOM. & ADMIN. BLDG. , FUJAIRAH	ETISALAT	COSTAIN ABU DHABI CO.	UNIFLAIR	1995
ETISALAT TELECOM. & ADMIN .BLDG., RAK	ETISALAT	COSTAIN ABU DHABI CO.	UNIFLAIR	1995
CENTRE HOTEL NOVOTEL	CENTRE HOTEL NOVOTEL	CENTRE HOTEL NOVOTEL	UNIFLAIR	1996
MERIDIEN HOTEL	MERIDIEN HOTEL	TECHNICAL CONTRACTOR	UNIFLAIR	1996
ADCO HEAD QUARTERS	ADCO	DECO EMIRATES	UNIFLAIR	1996
ZAYED MILITARY SCHOOL	-	LOCAL COMPUTERS	UNIFLAIR	1996
AL HAMRA PLAZA	AL HAMRA PLAZA	AL HAMRA PLAZA	UNIFLAIR	1996
STATE SECURITY DEPARTMENT	PUBLIC WORKS DEPT	GULF CONTG. CO.	UNIFLAIR	1996

RAISED FLOOR- REFERENCES

PROJECT NAME	CLIENT	CONTRACTOR	MANUFACTURER	YEAR
MAQTA GAS RECEIVING STATION	ADNOC	AL MANSOURI 3 B	UNIFLAIR	1997
ADDITIONAL WORKS AT AL KHATAM PRISON	PUBLIC WORKS DEPT	ANTRA GEN.CONTG	UNIFLAIR	1997
POLICE STATION NEAR MINA ZAYED	POLICE DEPT.	CIPCO	UNIFLAIR	1997
UNION NATIONAL BANK, MUSSAFAH BRANCH	UNION NATIONAL BANK	LAING ABU DHABI	UNIFLAIR	1997
MUSSAFAH, 220/33/11 KV SUB SUBSTATION	ABU DHABI WATER & ELECTRICITY DEPT	ACTCO	UNIFLAIR	1997
PREVENTIVE MEDICINE	PUBLIC WORKS DEPT	ANTRA GEN.CONTG	UNIFLAIR	1997
NATIONAL BANK OF ABU DHABI , MUSSAFAH	NATIONAL BANK OF ABU DHABI	AL QANTARA GEN. CONTG	UNIFLAIR	1997
ETISALAT PUBLIC OFFICE, DEFENSE R/A	ETISALAT	INTERMASS ENGG. CONT	UNIFLAIR	1997
TOTAL ABU ALBUKHOUSH	TOTAL ABU ALBUKHOUSH	DECO EMIRATES	UNIFLAIR	1997
EXTENSION OF TOWN PLANNING DEPT	TOWN PLANNING DEPT - AL AIN	OBAID BIN RASHID GEN. CONTG.	UNIFLAIR	1998
ETISALAT PUBLIC OFFICE ,MAFRAQ	ETISALAT	KHALIFA AL SWAIDI GEN. CONTG	UNIFLAIR	1998
ETISALAT PUBLIC OFFICE AT PORT SAEED	ETISALAT	AL ASHRAM CONTG	UNIFLAIR	1998

RAISED FLOOR- REFERENCES

PROJECT NAME	CLIENT	CONTRACTOR	MANUFACTURER	YEAR
ETISALAT PUBLIC OFFICE AT AL ZAHRA	ETISALAT	GINCO CONTG. EST.	UNIFLAIR	1998
ETISALAT PUBLIC OF. AT AL-HAYER & AL WAGIN	ETISALAT	GULF PIONEERS GEN. CONTG.	UNIFLAIR	1998
TV TECHNICAL ROOMS RENOVATION WORKS	EMIRATES BROADCASTING CORP.	LAING ABU DHABI	UNIFLAIR	1998
ETISALAT PUBLIC OFFICE AT MUSSAFAH CENTRAL	ETISALAT	ENGG. CONTG. CO.	UNIFLAIR	1998
MW/1590	DIRECTORATE OF MILITARY WORKS	AL MUREIKHI	UNIFLAIR	1998
ERICSSON STORE,DUBAI	ERICSSON	ERICSSON	UNIFLAIR	1998
REFURBISHMENT OF PMAT CT 2 AREA	ETISALAT	ETISALAT	UNIFLAIR	1998
HOSPITAL MADINAT ZAYED	DIRECTORATE OF MILITARY WORKS	AL MUREIKHI	UNIFLAIR	1998
EMIRATES GENERAL TRADING	EMIRATES GENERAL TRADING	EMIRATES GEN. TRADING	UNIFLAIR	1998
ZAYED UNIVERSITY	PRIVATE	EMIRATES COMPUTERS	UNIFLAIR	1998
AUH COMBAT CLUB	PRIVATE	SEAPAL TRADING & SER.	UNIFLAIR	1998
NAT. BANK OF AUH ,SHARE CENTRE	NAT. BANK OF AUH	AL TOUFIQ GEN.CONTG.	UNIFLAIR	1998

RAISED FLOOR- REFERENCES

PROJECT NAME	CLIENT	CONTRACTOR	MANUFACTURER	YEAR
ETISALAT RECREATION CENTRE	ETISALAT	AL MULLA CONST. CO.	UNIFLAIR	1999
ACCOM. COMPLEX AT ASAB	ADCO	AL HABTOOR ENGG.	UNIFLAIR	1999
ETISALAT PUB. OFF.AT YAHER	ETISALAT	GULF PIONEERS GEN. CONTG.	UNIFLAIR	1999
ETISALAT PUB. OFF.AT HILLIE	ETISALAT	ARABIAN CONTG. EST,	UNIFLAIR	1999
SHARJAH INT'L AIRPORT	SHARJAH INT'L AIRPORT	AYOUBCO	UNIFLAIR	1999
DEPT. OF ORGANIZATION & MANAGEMENT	GOVERNMENT OF AUH	DEPT. OF ORGANIZATION	UNIFLAIR	1999
POLICE COURTS	AUH POLICE	ABU BADER GEN. GONTG.	UNIFLAIR	1999
ZAYED UNIVERSITY AUH CAMPUS	PUBLIC WORKS DEPT	AL HAMED DEV. & CONST.	UNIFLAIR	1999
ETISALAT TELECOM. BLDG., AT SAKAMKAM, FUJ.	ETISALAT	GULF PIONEERS GEN. CONTG.	UNIFLAIR	1999
KENDAH HOUSE	PRIVATE	AL HABTOOR ENGG.	UNIFLAIR	1999
CUSTOMER SERVICE CTR	ABU DHABI WATER & ELECTRICITY DEPT	AL FARAA	UNIFLAIR	1999
NISSAN MIDDLE EAST SHOWROOM	NISSAN MIDDLE EAST	NISSAN MIDDLE EAST	UNIFLAIR	1999

RAISED FLOOR- REFERENCES

PROJECT NAME	CLIENT	CONTRACTOR	MANUFACTURER	YEAR
WOMEN SOCIETY COMPLEX,AL AIN		OBEID BIN RASHID	UNIFLAIR	2000
ETISALAT CUSTOMER SERVICES BLDG.	ETISALAT	AL HAMED DEV. & CONST.	UNIFLAIR	2000
NEWS ROOM EXTENSION	EMIRATES BROADCASTING	LAING	UNIFLAIR	2000
AL SHOALA COMPLEX	AL NABOODAH	AL NABOODAH CONTG.	UNIFLAIR	2000
ADOC - DCS RENEWAL PROJECT	ADOC	MIDDLE EAST GEN. ENT.	UNIFLAIR	2000
LEXUS BLDG.	PRIVATE	KADDAS MAINT. SERVICES	UNIFLAIR	2000
AL DHAFRA AIR BASE	DIRECTORATE OF MILITARY WORKS	AL HASSANI GEN. MAINT.	LINDNER	2000
RED CORNER COMPUTER	PRIVATE	RED CORNER COMPUTER	LINDNER	2000
220/33 KV GRID SUB-STATION AT SILA	ABU DHABI WATER & ELECTRICITY DEPT	ACTCO	LINDNER	2000
NATIONAL BANK OF AUH S-18	NATIONAL BANK OF AUH	GULF TIGER CONTG.	LINDNER	2000
REHAB. WORKS FOR ADDC BLDG.	PRIVATE	ARABTECH	LINDNER	2000
MAFRAQ HOSPITAL	PUBLIC WORKS DEPT	AL FARA'A	LINDNER	2000

RAISED FLOOR- REFERENCES

PROJECT NAME	CLIENT	CONTRACTOR	MANUFACTURER	YEAR
BLDG. AL SHAMSI SHJ.	PRIVATE	S.S. LOOTAH	LINDNER	2000
132/11KV SUBSTATION - W11	ABU DHABI WATER & ELECTRICITY DEPT	ACTCO	LINDNER	2000
AJMAN UNIVERSITY OF SCIENCE LAB	AJMAN UNIVERSITY	AJMAN UNIVERSITY OF SCIENCE	LINDNER	2000
AL GARHOUD APARTMENTS	H.H. HAMDAN BIN RASHID AL MAKTOUM	BELHASA SIXCO.	LINDNER	2000
UNITED ARAB BANK	UNITED ARAB BANK	ASSAKHRA	LINDNER	2000
REHAB. WORKS FOR ADDC BLDG.	ABU DHABI WATER & ELECTRICITY DEPT	ARABTECH	LINDNER	2000
CONTROL ROOMS REFURB.	PRIVATE	ASSAKHRA	LINDNER	2000
AJMAN UNIVERSITY,ABU DHABI	AJMAN UNIVERSITY OF SCIENCE & TECH.	AJMAN UNIVERSITY OF SCIENCE	LINDNER	2000
BLDG. AL ROSTOMANI H.O.	AL ROSTOMANI	FEDERAL BLDG. IND.	LINDNER	2001
ETISALAT, AJMAN	ETISALAT	ENERGOPROJEKT	LINDNER	2001
TOWER AL FATTAN	MR. MUSABAH AL FATTAN	NASA MULTIPLEX	LINDNER	2001
TOWER NO 1, AT SHEIKH ZAYED ROAD	PRIVATE	AL HABTOOR ENGG.	LINDNER	2001

RAISED FLOOR- REFERENCES

PROJECT NAME	CLIENT	CONTRACTOR	MANUFACTURER	YEAR
PETROLEUM INSTITUTE	ADNOC	ENGG. CONTG. CO.	LINDNER	2001
REN. WORKS AT I.T. DEPT AT KHABEESI	PRIVATE	AL MAJID CONTG.	LINDNER	2001
CONST. OF BAB INFRA. ASAB	ADNOC	ARABTEC	LINDNER	2001
SKYWALK TOWERS ,REGGA	PRIVATE	ENGG. CONT'G. CO.	LINDNER	2001
MW/2133 - AIR COLLEGE	DIRECTORATE OF MILITARY WORKS	CODE CONTG.	LINDNER	2001
REFURB. OF ADDC AT ZAFFARANAHA	ABU DHABI WATER & ELECTRICITY DEPT	ARABTEC	LINDNER	2001
220/33 KV GRID SUBS.ERAD & MEZYAD	ABU DHABI WATER & ELECTRICITY DEPT	ACTCO	LINDNER	2001
PRIVATE PALACE AT GHANTOUT	PRIVATE	AL HABTOOR-MURRAY	LINDNER	2001
REFURB. SALES BRANCH AT MAD. ZAYED	ABU DHABI WATER & ELECTRICITY DEPT	AL FARA'A	LINDNER	2001
TAWEELAH " A 1 " WATER & POWER PROJECT	ABU DHABI WATER & ELECTRICITY DEPT	ACTCO	LINDNER	2001
POLICE COMPUTER HALLS	POLICE DEPT	POLICE DEPT	LINDNER	2001
MINA ZAYED SERVERS ROOM	MINA ZAYED AUTHORITY	MINA ZAYED AUTHORITY	LINDNER	2001

RAISED FLOOR- REFERENCES

PROJECT NAME	CLIENT	CONTRACTOR	MANUFACTURER	YEAR
ADWEA HEAD QUARTERS BLDG.	ABU DHABI WATER & ELECTRICITY DEPT	ARABTEC	LINDNER	2001
ADCO " Y " BLOCK	ADCO	ARABTEC	LINDNER	2001
AL BUHAIRA INSURANCE TOWER	PRIVATE	AL HAMAD CONTR.	LINDNER	2001
ACE HARDWARE PROJECT	PRIVATE	A..C.C.	LINDNER	2001
NAVAL ACADEMY SCHOOL	DIRECTORATE OF MILITARY WORKS	AL HAMED DEV. & CONST.	LINDNER	2001
400KV INTERCONNECTION Taweela MUSSAFAH	ABU DHABI WATER & ELECTRICITY DEPT	ACTCO	LINDNER	2001
400KV GRIDSTATION TAWELA	ABU DHABI WATER & ELECTRICITY DEPT	ACTCO	LINDNER	2001
AL QUOZ STABLES OFF. BLOCK	PRIVATE	ENGINEER'S OFFICE	LINDNER	2001
ANTIONAL BANK OF AUH AT UMM AL QUWAIN	NATIONAL BANK OF AUH	ABU HUSSAIN	LINDNER	2001
UMM AL NAR	DIRECTORATE OF MILITARY WORKS	GULF EAGLE	LINDNER	2001
DUBAI INT'L AIRPORT EXP.SUPER GATE	CIVIL AVIATION	AL NEKHREH CONT. CO.	LINDNER	2001
TOWER ON PLOT P205, DUBAI	PRIVATE	NASA MULTIPLEX	LINDNER	2001

RAISED FLOOR- REFERENCES

PROJECT NAME	CLIENT	CONTRACTOR	MANUFACTURER	YEAR
AUH REQUIREMENT PENSION	PRIVATE	DECO EMIRATES	LINDNER	2001
OFFSETS 4TH , 12TH & 5TH FLOOR PROJECT	PRIVATE	GULF COM. GROUP	LINDNER	2001
AUH EQUESTRIAN CLUB	PRIVATE	CIVILCO	LINDNER	2001
AWEER 132/32 KV SUBS.	DUBAI ELECTRICITY & WATER DEPT	ACTCO	LINDNER	2002
AL BATHA COMPOUND	PRIVATE	DARWISH ENGG.	LINDNER	2002
AUH SHIP BLDG. CONT. 2	PUBLIC WORKS DEPT.	AL HAMED DEV. & CONST.	LINDNER	2002
MW2117 MIS. WORKSHOP MOQATARA	DIRECTORATE OF MILITARY WORKS	UNITY CONTG.	LINDNER	2002
AL GEEMI HOSPITAL	PUBLIC WORKS DEPT.	AL ETQAN ENGG.	LINDNER	2002
ETISALAT SIM/SMART CARD	ETISALAT	ALI MOOSA & SONS CONTG.	LINDNER	2002
INT'L TENNIS COMPLEX	PUBLIC WORKS DEPT	AL GHAFLY GEN. CONTG.	LINDNER	2002
220/33/11KV SUB. AT KHAZNA	ABU DHABI WATER & ELECTRICITY DEPT	ACTCO	LINDNER	2002
220/33/11KV SUB. AT MAHAWE	ABU DHABI WATER & ELECTRICITY DEPT	ACTCO	LINDNER	2002

RAISED FLOOR- REFERENCES

PROJECT NAME	CLIENT	CONTRACTOR	MANUFACTURER	YEAR
SCHOOL OF CREATIVE SCIENCE, SHJ.	PRIVATE	SCHOOL OF CREATIVE SCIENCE	LINDNER	2002
PETROLEUM INSTITUTE PHASE II	ADNOC	ENGG. CONTG. CO.	LINDNER	2003
220/33/11KV SUB. AT SANAIYA	ABU DHABI WATER & ELECTRICITY DEPT	ACTCO	LINDNER	2003
220/33/11KV SUB. AT AL WAGAN	ABU DHABI WATER & ELECTRICITY DEPT	ACTCO	LINDNER	2003
ABU DHABI COMMERCIAL BANK	ABU DHABI COMMERCIAL BANK	ABU HUSSEIN	LINDNER	2003
OPERATOR ROOM FOR PUBLIC WORKS DEPT.	PUBLIC WORKS DEPT	I.C.R. FOAM	LINDNER	2003
FUJAIRAH DESALINATION PLANT	U.A.E. OFFSETS GROUP	A.C.C.	LINDNER	2003
ADCB AL SALAAM BRANCH	ABU DHABI COMMERCIAL BANK	ABU HUSSEIN	LINDNER	2003
SUBSTATION AT SAMHA	ABU DHABI WATER & ELECTRICITY DEPT	TARGET ENGG.	LINDNER	2003
SUBSTATION AL AIN SOUTH WEST	ABU DHABI WATER & ELECTRICITY DEPT	TARGET ENGG.	LINDNER	2003
SUBSTATION AL AIN CITY CTR.	ABU DHABI WATER & ELECTRICITY DEPT	TARGET ENGG.	LINDNER	2003
SUBSTATION AT BAHIYA & NADIA	ABU DHABI WATER & ELECTRICITY DEPT	TARGET ENGG.	LINDNER	2003

RAISED FLOOR- REFERENCES

PROJECT NAME	CLIENT	CONTRACTOR	MANUFACTURER	YEAR
SUBSTATION AT CONF.PALACE	ABU DHABI WATER & ELECTRICITY DEPT	TARGET ENGG.	LINDNER	2003
MAINT. FENCE AL BATEEN AIRBASE	DIRECTORATE OF MILITARY WORKS	AL HAMED DEV. & CONST.	LINDNER	2003
FUJAIRAH POWER & DES. STATION	U.A.E. OFFSETS GROUP	SIX CONSTRUCT	LINDNER	2003
MODIF. OF SPORTS CHANNEL	EMIRATES MEDIA	TRADE LINE	LINDNER	2003
TELEPORT BLDG. SERV. BLOCK	DUBAI INTERNET CITY	TEAM ENGG.	LINDNER	2003
KHALIFA PARK	PUBLIC WORKS DEPT	AL HAMED DEV. & CONST.	LINDNER	2003
AL AIN CLUB 2003 FACILITIES	AL AIN MUNICIPALITY & TOWN PLANNING	AL HABTOOR ENGG.	LINDNER	2003
MW-1979, PLAYHALL CADET ACC.	DIRECTORATE OF MILITARY WORKS	AL FARA'A	LINDNER	2003
132/11 KV SUB. GOLDEN SANDS	DUBAI ELECTRICITY & WATER DEPT	ACTCO	LINDNER	2003
132/11 KV SUB. EMIRATES HILLS	DUBAI ELECTRICITY & WATER DEPT	ACTCO	LINDNER	2003
132/11 KV SUB. FESTIVAL CITY	DUBAI ELECTRICITY & WATER DEPT	ACTCO	LINDNER	2003
132/11 KV SUB. HUDEIBA	DUBAI ELECTRICITY & WATER DEPT	ACTCO	LINDNER	2003

RAISED FLOOR- REFERENCES

PROJECT NAME	CLIENT	CONTRACTOR	MANUFACTURER	YEAR
132/11 KV SUB. HADEEQA	DUBAI ELECTRICITY & WATER DEPT	ACTCO	LINDNER	2003
132/11 KV SUB. ITTIHAD	DUBAI ELECTRICITY & WATER DEPT	ACTCO	LINDNER	2003
ADNOC NEW DCS ROOM AT UMM AL NAR	ADNOC	ADNOC	LINDNER	2003
EQUIPMENT ROOM RAS GHAMIS	MILITARY WORKS DEPT.	FORCE 10 U.A.E. LTD.	LINDNER	2003
SVC PLANT AT MUSSAFAH	ABU DHABI WATER & ELECTRICITY DEPT	ACTCO	LINDNER	2003
SVC PLANT AT AL AIN	ABU DHABI WATER & ELECTRICITY DEPT	ACTCO	LINDNER	2003
EXT. OF U.A.E. CENTRAL BANK	U.A.E. CENTRAL PARK	DHAFIR DEV.	LINDNER	2003
PETROLEUM INSTITUTE PHASE 3	ADNOC	GROUP 3	LINDNER	2003
CONTROL ROOM AT AUH AIRPORT	ADAC	TEAMCO	LINDNER	2003
REN. OF EXISTING OFF.AT MAZAYA	PRIVATE	DUTCO BALFOUR BEATTY	LINDNER	2003
X-RAY ROOM AT MAFRAQ	PUBLIC WORKS DEPT	CLOISAL	LINDNER	2003
BU HASA INFRA STRUCTURE	ADCO	AL HABTOOR ENGG.	LINDNER	2003

RAISED FLOOR- REFERENCES

PROJECT NAME	CLIENT	CONTRACTOR	MANUFACTURER	YEAR
MW/397 - AL AIN	MILITARY WORKS DEPT.	GULF EAGLE	LINDNER	2004
MINISTRY OF LABOUR & SOCIAL AFF.	MINISTRY OF PUBLIC WORKS	AL SHAFAR TRANSPORT	LINDNER	2004
MW-LF-162-01 BMP TRAINING CTR.	DIRECTORATE OF MILITARY WORKS	UNITED ENGG. & TRDG. CO.	LINDNER	2004
REN. FOR SP. HALL FOR MIL. POLICE	DIRECTORATE OF MILITARY WORKS	CAPRIOLE CONST.	LINDNER	2004
POLICE COMPUTER ROOMS	POLICE DEPT.	BETA INFORMATION	LINDNER	2004
ZADCO OFFICES	ZADCO	FORCE 10 U.A.E. LTD.	LINDNER	2004
ABN AMRO BANK AUH	ABN AMRO BANK AUH	AMB BLDG. INTERIORS	LINDNER	2004
GHURAIR GIGA GOLD REFINERY	PRIVATE	AL SAHEL CONTG.	LINDNER	2004
IWP PROJECT - UMM AL NAR 400/132 KV SUBSTATION	ABU DHABI WATER & ELECTRICITY DEPT	ACTCO	LINDNER	2004
220/33 KV SUBSTATIONS AT MUSSAFAH GIC & CENTRAL	ABU DHABI WATER & ELECTRICITY DEPT	ACTCO	LINDNER	2004
AL FALAH REST HOUSE AT AL RAWAFED	PRIVATE OF. OF SHK. ZAYED BIN SULTAN	BELBADI	LINDNER	2004
FIRST GULF BANK HEAD QUARTERS	FIRST GULF BANK	BIN BROOK TRADING	LINDNER	2004

RAISED FLOOR- REFERENCES

PROJECT NAME	CLIENT	CONTRACTOR	MANUFACTURER	YEAR
UMM AL NAR INDEP. WATER & POWER	ABU DHABI WATER & ELECTRICITY DEPT	A.C.C.	LINDNER	2004
132/11 KV SUBSTATION AT E18/02A	ABU DHABI WATER & ELECTRICITY DEPT	ASCON	LINDNER	2004
NEW ADMIN. BLDG. RUWAIS REFINERY	ADNOC	AL MURAIKHI GEN. CONT.	LINDNER	2004
NEW SAFETY BLDG. AT BU HASA	GASCO	AL FARA'A GEN. CONT. CO.	LINDNER	2004
MW-SO-287-2003	DIRECTORATE OF MILITARY WORKS	TRUST	LINDNER	2004
AL BATEEN AIRBASE	DIRECTORATE OF MILITARY WORKS	AL THARAWAT GEN. CONTG.	LINDNER	2004
INTELLIGENCE H.Q.	DIRECTORATE OF MILITARY WORKS	ALGECO	LINDNER	2004
WOMEN SOCIETY AT ABU DHABI	PUBLIC WORKS DEPT	UNION CONTG.	LINDNER	2004
MW-AF-128-2002 BLDG. AT DAFRA	DIRECTORATE OF MILITARY WORKS	SEIDCO	LINDNER	2004
MW-AF-129-2002 BLDG. AT DAFRA	DIRECTORATE OF MILITARY WORKS	SEIDCO	LINDNER	2004
GERMAN CONSULATE	GERMAN CONSULATE	G + H INNENAUSBAU	LINDNER	2004
AUH POLICE OPERATION ROOM PROJECT	AUH POLICE DEPT	GLOBAL INTELLIGENCE SYS.	LINDNER	2004

RAISED FLOOR- REFERENCES

PROJECT NAME	CLIENT	CONTRACTOR	MANUFACTURER	YEAR
132/11 KV SUBSTATION AT RAS AL KHOR	DUBAI ELECTRICITY & WATER DEPT	FEDERAL BLDG. INDUSTRIES	LINDNER	2004
132/11 KV SUBSTATION AT OUD AL MATHENA	DUBAI ELECTRICITY & WATER DEPT	FEDERAL BLDG. INDUSTRIES	LINDNER	2004
132/11 KV SUBSTATION AT INTERNET CITY	DUBAI ELECTRICITY & WATER DEPT	FEDERAL BLDG. INDUSTRIES	LINDNER	2004
132/10 KV SUBSTATION AT CHINESE TOWN	DUBAI ELECTRICITY & WATER DEPT	ACTCO	LINDNER	2005
132/10 KV SUBSTATION AT THE GREENS	DUBAI ELECTRICITY & WATER DEPT	ACTCO	LINDNER	2005
NEW DIWAN BLDG. AL AIN	RULER'S REPRESENTATIVE AT AL AIN	SEIDCO	LINDNER	2005
NORTH EAST BAB PHASE I DEV.BLDG. & SERVICES	ADNOC	TARGET ENGG.	LINDNER	2005
ADNOC GROUP COMP. NEW H.Q.	ADNOC	AL HABTOOR MURRAY	LINDNER	2005
NORTH EAST BAB PHASE I DEV. PROJECT	ADNOC	C.C.I.C.	LINDNER	2005
ADWEA RESEARCH CENTRE & H.Q. BLDG.	ABU DHABI WATER & ELECTRICITY DEPT	DHABI CONTRACTING	LINDNER	2005
O/M CONTROL FOR TAKREER	AUH OIL REFINING CO. (TAKREER)	AUH OIL REFINING (TAKREER)	LINDNER	2005
132/10 KV SUBSTATION AT OASIS VILLAGE	DUBAI ELECTRICITY & WATER DEPT	ACTCO	LINDNER	2005

RAISED FLOOR- REFERENCES

PROJECT NAME	CLIENT	CONTRACTOR	MANUFACTURER	YEAR
132/10 KV SUBSTATION AT KARAMA	DUBAI ELECTRICITY & WATER DEPT	ACTCO	LINDNER	2005
132/10 KV SUBSTATION AT SALAH UDDIN	DUBAI ELECTRICITY & WATER DEPT	ACTCO	LINDNER	2005
132/10 KV SUBSTATION AT THE LAKES	DUBAI ELECTRICITY & WATER DEPT	ACTCO	LINDNER	2005
132/10 KV SUBSTATION AT ARABIAN RANCHES	DUBAI ELECTRICITY & WATER DEPT	ACTCO	LINDNER	2005
PALM ISLAND 132/11 KV SUBSTATION J1	DUBAI ELECTRICITY & WATER DEPT	ASCON	LINDNER	2005
PALM ISLAND 132/11 KV SUBSTATION J2	DUBAI ELECTRICITY & WATER DEPT	ASCON	LINDNER	2005
PALM ISLAND 132/11 KV SUBSTATION J3	DUBAI ELECTRICITY & WATER DEPT	ASCON	LINDNER	2005
PALM ISLAND 132/11 KV SUBSTATION J4	DUBAI ELECTRICITY & WATER DEPT	ASCON	LINDNER	2005
132/11 KV SUB. AT UPTOWN MERDEF	DUBAI ELECTRICITY & WATER DEPT	AL GHANDI C.C.C.	LINDNER	2005
132/11 KV SUB. AT MEADOWS EM. HILLS	DUBAI ELECTRICITY & WATER DEPT	AL GHANDI C.C.C.	LINDNER	2005
132/11 KV SUB. AT BURJ DUBAI	DUBAI ELECTRICITY & WATER DEPT	AL GHANDI C.C.C.	LINDNER	2005
132/11 KV SUB. AT W16, AUH	ABU DHABI WATER & ELECTRICITY DEPT	ACTCO	LINDNER	2005

RAISED FLOOR- REFERENCES

PROJECT NAME	CLIENT	CONTRACTOR	MANUFACTURER	YEAR
132/11 KV SUB. AT MARINA MALL	ABU DHABI WATER & ELECTRICITY DEPT	ACTCO	LINDNER	2005
G1577- REPLACEMENT OF GAS CHLOR. AT VARIOUS PUMPING STATIONS	ABU DHABI WATER & ELECTRICITY DEPT	WESCO	LINDNER	2005
132/11 KV SUBSTATION AT E-14 ABU DHABI	ABU DHABI WATER & ELECTRICITY DEPT	GRANITE/FPS MIDDLE EAST	LINDNER	2005
132/11 KV SUBSTATION AT W-47 ABU DHABI	ABU DHABI WATER & ELECTRICITY DEPT	HABIB RAFIQ LTD	LINDNER	2005
REPLACEMENT OF GAS CHLORINATION SYSTEMS	ABU DHABI WATER & ELECTRICITY DEPT	GISCO	LINDNER	2005
MW-NG-219-02-NAVAL COL. AT Taweela	DIRECTORATE OF MILITARY WORKS	IN & OUT SPACE	LINDNER	2005
COLLEGE OF INFORMATION & TECH.	U.A.E. UNIVERSITY, AL AIN	DAEWOO	LINDNER	2005
CEMENT PLANT MUSSAFAH	PRIVATE	PETRON EMIRATES	LINDNER	2005
5 NOS. 33/11 KV SUBST. AT AL AIN	ABU DHABI WATER & ELECTRICITY DEPT	PIVOT	LINDNER	2005
SAHIL ACCOM. REPLAC. DAS ISLAND	ADNOC - ADMA/OPCO	TARGET ENGG.	LINDNER	2005
NEW CAFÉ SHOP MARINA MALL	PRIVATE	ACTCO	LINDNER	2005
NEW 132/11KV SUBSTATION AT S18	ABU DHABI WATER & ELECTRICITY DEPT	HYUNDAI	LINDNER	2005

RAISED FLOOR- REFERENCES

PROJECT NAME	CLIENT	CONTRACTOR	MANUFACTURER	YEAR
NEW 132/11KV SUBSTATION AT S 16	ABU DHABI WATER & ELECTRICITY DEPT	HYUNDAI	LINDNER	2005
EXT. & REFURB. OF IRRIGATION PUMPING STATIONS	ABU DHABI WATER & ELECTRICITY DEPT	GISCO	LINDNER	2005
MW-SO-056-SWEIHAN	DIRECTORATE OF MILITARY WORKS	ALGECO	LINDNER	2005
400/220 KV SUBSTATION AT DHAID	DUBAI ELECTRICITY & WATER DEPT	C.C.I.C.	LINDNER	2005
MW-AF-130	DIRECTORATE OF MILITARY WORKS	ALGECO	LINDNER	2005
ADPS 400 KV BUSBAR EXTENSION, ABU DHABI	ABU DHABI WATER & ELECTRICITY DEPT	ACTCO	LINDNER	2005
AL NAKHEEL 3 POWER STATION EXT.	DUBAI ELECTRICITY & WATER DEPT	ACTCO	LINDNER	2005
33/11/6.6/0.415KV SUBSTATION	DUBAI ELECTRICITY & WATER DEPT	ACTCO	LINDNER	2005
MW/SO/367 HANGERS	DIRECTORATE OF MILITARY WORKS	ALGECO	LINDNER	2005
AL JAZEERA TOWERS	PRIVATE	AL HAMED DEV. & CONST.	LINDNER	2005
DEPT OF ORGAN. & MANAGE.	PRIVATE	AL HAMED DEV. & CONST.	LINDNER	2005
MW-OU-065R BORDER CHECK POINT	DIRECTORATE OF MILITARY WORKS	AL FARA'A	LINDNER	2005

RAISED FLOOR- REFERENCES

PROJECT NAME	CLIENT	CONTRACTOR	MANUFACTURER	YEAR
220/33 KV SUB. AT BAB	ABU DHABI WATER & ELECTRICITY DEPT	HYUNDAI	LINDNER	2005
220/33 KV SUB. AT BU HASA	ABU DHABI WATER & ELECTRICITY DEPT	HYUNDAI	LINDNER	2005
AUH AIRPORT TERMINAL 1 & 2	AUH AIRPORT AUTHORITIES	AL JABER	LINDNER	2005
EMIGRATION BLDG.	PRIVATE	GCM CONTG. & GEN. MAINT.	LINDNER	2005
GENERAL PENSION & SOCIAL SEC.	PUBLIC WORKS DEPT	DARWISH ENGG. EMIRATES	LINDNER	2005
CONST. FOR JEBEL DANNA TANK FARM	PRIVATE	TARGET ENGG.	LINDNER	2005
MW-AF-118-05	DIRECTORATE OF MILITARY WORKS	CODE CONTG.	LINDNER	2005
AL AIN GIMI HOSPITAL	PRIVATE	AL HAMED DEV. & CONST.	LINDNER	2005
CANADIAN EMBASSY	CANADIAN EMBASSY	ABU HUSSEIN	LINDNER	2005
SUBSTATION AT DIAMOND CTR.	DUBAI ELECTRICITY & WATER DEPT	F.B.I.	LINDNER	2005
SUBSTATION AT GARDENS	DUBAI ELECTRICITY & WATER DEPT	F.B.I.	LINDNER	2005
SUBSTATION AT TECHNO PARK	DUBAI ELECTRICITY & WATER DEPT	F.B.I.	LINDNER	2005

RAISED FLOOR- REFERENCES

PROJECT NAME	CLIENT	CONTRACTOR	MANUFACTURER	YEAR
AL NOOR HOSPITAL	AL NOOR HOSPITAL	AL NOOR HOSPITAL	LINDNER	2005
A.B.B. UTILITIES HEAD OFFICE	PRIVATE	GULF PIONEERS GEN. CONTG.	LINDNER	2005
DIST. MANAG. & CTRL CTR. ABU DHABI	PRIVATE	SEIDCO GEN. CONTG.	LINDNER	2006
132/11 KV KHALAS J5 SUB. AT PALM	DUBAI ELECTRICITY & WATER DEPT	E.T.A.	LINDNER	2006
CAPITAL TOWER PROJECT	PRIVATE	AL GHANDI & C.C.C.	LINDNER	2006
SUBSTATION AT BARAHA	DUBAI ELECTRICITY & WATER DEPT	GREEN OASIS GEN. CONTG.	LINDNER	2006
SUBSTATION AT NAJMA	DUBAI ELECTRICITY & WATER DEPT	GREEN OASIS GEN. CONTG.	LINDNER	2006
SUBSTATION AT RASHIDYA	DUBAI ELECTRICITY & WATER DEPT	GREEN OASIS GEN. CONTG.	LINDNER	2006
DIABETIC CENTRE	PRIVATE	SAUDI OGER EMIRATES	LINDNER	2006
MW-AF-118-05	DIRECTORATE OF MILITARY WORKS	CODE CONTG.	LINDNER	2006
MW-AF-457-2005	DIRECTORATE OF MILITARY WORKS	TRUST	LINDNER	2006
SUBSTATION AR RAMAH	ABU DHABI WATER & ELECTRICITY DEPT	FPS MIDDLE EAST LTD.	LINDNER	2006

RAISED FLOOR- REFERENCES

PROJECT NAME	CLIENT	CONTRACTOR	MANUFACTURER	YEAR
SUBSTATION AT GAYATHI	ABU DHABI WATER & ELECTRICITY DEPT	FPS MIDDLE EAST LTD.	LINDNER	2006
HAMRIYAH POWER STATION PHASE 1	DUBAI ELECTRICITY & WATER DEPT	ACTCO	LINDNER	2006
RO DESALINATION PLANT AT NEW QIDFA	DUBAI ELECTRICITY & WATER DEPT	TECTON ENGG. AND CONST.	LINDNER	2006
RO DESALINATION PLANT AT ZAWRAH	FED. ELECTRICITY & WATER DEPT	TECTON ENGG. AND CONST.	LINDNER	2006
MW-AF-088-2006	DIRECTORATE OF MILITARY WORKS	TRUST	LINDNER	2006
MUQATRA PHASE 1	DIRECTORATE OF MILITARY WORKS	ALGECO	LINDNER	2006
MW-AF-013 WATCH TOWER	DIRECTORATE OF MILITARY WORKS	ALGECO	LINDNER	2006
SAFRAN PROJECT AT BIDA' ZAYED	DIRECTORATE OF MILITARY WORKS	THE CONTRACTORS CO.	LINDNER	2006
COMM. AND RES. BLDG. AT KHALIDIYA	PRIVATE	GROUP 3	LINDNER	2006
REHAB. OF AL WAGAN GRID SUBS.	ABU DHABI WATER & ELECTRICITY DEPT	ACTCO	LINDNER	2006
EXPANSION OF AUH PAPER MILL	PRIVATE	GROUP 3	LINDNER	2006
SCHLUMBERGER MLC-MEA LEARN. CTR	ADNOC	AMANA STEEL	LINDNER	2006

RAISED FLOOR- REFERENCES

PROJECT NAME	CLIENT	CONTRACTOR	MANUFACTURER	YEAR
PALACE FOR H.H. THE CHAIRMAN	PRIVATE	BINLADIN CONTG. GROUP	LINDNER	2006
MW/AF/117 BATEEN PH. IV	DIRECTORATE OF MILITARY WORKS	ALGECO	LINDNER	2006
J00551 HORIZON - MUQATARA	DIRECTORATE OF MILITARY WORKS	ALGECO	LINDNER	2006
COM. TOWER FOR H.H. SHK. SAIF AL NAHYAN	PRIVATE	EMIRATES LINK MALTAURO	LINDNER	2006
MW/OU/381 HIGHER TECH. BLDG.	DIRECTORATE OF MILITARY WORKS	ALGECO	LINDNER	2006
MW/NF/147/06	DIRECTORATE OF MILITARY WORKS	CODE CONTG.	LINDNER	2006
POLICE COLLEGE OFFICES	ABU DHABI POLICE GHQ	ABU DHABI POLICE GHQ	LINDNER	2006
RUWAIS THIRD NGL - GASCO	GASCO	C.C.I.C.	LINDNER	2006
MINISTRY OF FOREIGN AFFAIRS	PRIVATE	SIX CONSTRUCT	LINDNER	2006
BURJ RESIDENCE AT PLOT 44	PRIVATE	A.C.C.	LINDNER	2006
MW-AF-255-2005	DIRECTORATE OF MILITARY WORKS	SILVER COAST CONST.	LINDNER	2006
MW/AF/104 FIRE FIGHTING MODF. A	DIRECTORATE OF MILITARY WORKS	ALGECO	LINDNER	2006

RAISED FLOOR- REFERENCES

PROJECT NAME	CLIENT	CONTRACTOR	MANUFACTURER	YEAR
AL WATHBA CAMEL RACE TRACK	DIRECTORATE OF MILITARY WORKS	SQUARE GEN. CONTG.	LINDNER	2006
CERT TECHNOLOGY PARK	HIGHER COLLEGES OF TECHNOLOGY	HIGHER COL. OF TECHNOLOGY	LINDNER	2006
132/11 KV SUB. AT ZAWRA POWER PLANT	FED. ELECTRICITY & WATER DEPT	AL BADER CONTG. CO.	LINDNER	2007
MW-AF-257-05-248 AL DHAFRA	DIRECTORATE OF MILITARY WORKS	AL FIRAS GEN. CONTG.	LINDNER	2007
132/11 KV SUBSTATION AT BUSINESS BAY	DUBAI ELECTRICITY & WATER DEPT	GREEN OASIS GEN. CONTG.	LINDNER	2007
132/11 KV SUBSTATION AT AL QUOZ	DUBAI ELECTRICITY & WATER DEPT	GREEN OASIS GEN. CONTG.	LINDNER	2007
132/11 KV SUBSTATION AT VILLA DUBAI LAND	DUBAI ELECTRICITY & WATER DEPT	GREEN OASIS GEN. CONTG.	LINDNER	2007
132/11 KV SUBSTATION AT MIRDIF	DUBAI ELECTRICITY & WATER DEPT	GREEN OASIS GEN. CONTG.	LINDNER	2007
132/11 KV SUBSTATION AT MUDON	DUBAI ELECTRICITY & WATER DEPT	GREEN OASIS GEN. CONTG.	LINDNER	2007
132/11 KV SUBSTATION AT DUBAI FESTIVAL CITY 2	DUBAI ELECTRICITY & WATER DEPT	GREEN OASIS GEN. CONTG.	LINDNER	2007
132/11 KV SUBSTATION AT INT'L MEDIA PROD.	DUBAI ELECTRICITY & WATER DEPT	GREEN OASIS GEN. CONTG.	LINDNER	2007
132/11 KV SUBSTATION AT DUBAI METRO MPS1	DUBAI ELECTRICITY & WATER DEPT	ACTCO	LINDNER	2007

RAISED FLOOR- REFERENCES

PROJECT NAME	CLIENT	CONTRACTOR	MANUFACTURER	YEAR
132/11 KV SUBSTATION AT DUBAI METRO MPS2	DUBAI ELECTRICITY & WATER DEPT	ACTCO	LINDNER	2007
132/11 KV SUBSTATION AT DUBAI METRO MPS3	DUBAI ELECTRICITY & WATER DEPT	ACTCO	LINDNER	2007
GAS TURBINE STATION	FED. ELECTRICITY & WATER DEPT	AL ISSA	LINDNER	2007
WATER SUP. SYS. JAZIRAT AL HAMRA	DUBAI ELECTRICITY & WATER DEPT	TECTON ENGG. & CONST.	LINDNER	2007
NEW CLUSTER SER. BLDG. AT ASAB	-	AL GEEMI PARTNERS	LINDNER	2007
NORTHCROFT OFFICE TOWER	PRIVATE	DHAFIR DEV.	LINDNER	2007
AUH RETIR. PENSIONS FUND	AL GHAFLY	AL GHAFLY	LINDNER	2007
AL WAHDA MALL	PRIVATE	THINET	LINDNER	2007
MW-AF-451R-2004	DIRECTORATE OF MILITARY WORKS	FORCE 10 U.A.E. LTD.	LINDNER	2007
MW-AF-117	DIRECTORATE OF MILITARY WORKS	ALGECO	LINDNER	2007
ADNOC TECH. INSTITUTE AT SHAWAMEKH	ADNOC	AMANA STEEL	LINDNER	2007
33/6.3 KV SUB. AT RAS AL KHAIMAH	-	GULF EAGLE	LINDNER	2007

RAISED FLOOR- REFERENCES

PROJECT NAME	CLIENT	CONTRACTOR	MANUFACTURER	YEAR
MW/OU/274/06 CAFETERIA	DIRECTORATE OF MILITARY WORKS	ALGECO	LINDNER	2007
STEEL PLANT AT MUSSAFAH	PRIVATE	GULF COMMERCIAL GROUP	LINDNER	2007
SHARJAH BLDG.	PRIVATE	ACTCO	LINDNER	2007
SUBSTATION AT AL HAYER & DAHMA	ABU DHABI WATER & ELECTRICITY DEPT	EL RACE CONS.	LINDNER	2007
TRAFFIC BLDG. AT AL AIN GDP	PRIVATE	FORCE 10 U.A.E. LTD.	LINDNER	2007
INT. SECURITY SYS. FOR AL DHAFRA	DIRECTORATE OF MILITARY WORKS	CREST GEN. CONTG.	LINDNER	2007
STEEL FACT. AT MUSSAFA ICAD-2	PRIVATE	ACTCO	LINDNER	2007
400 KV GRID ST. & 220 KV SUWEIHAN	ABU DHABI WATER & ELECTRICITY DEPT	ACTCO	LINDNER	2007
POLICE STORE	PRIVATE	ABU HUSSEIN	LINDNER	2007
3 NOS. SUBSTATIONS AL AIN	ABU DHABI WATER & ELECTRICITY DEPT	LARSEN & TOUBRO	LINDNER	2007
MW-OU-327-2005	DIRECTORATE OF MILITARY WORKS	GULF EAGLE	LINDNER	2007
MW-OU-328-2005	DIRECTORATE OF MILITARY WORKS	GULF EAGLE	LINDNER	2007

RAISED FLOOR- REFERENCES

PROJECT NAME	CLIENT	CONTRACTOR	MANUFACTURER	YEAR
THE EXP. OF AUH INT'L AIRPORT	AUH CIVIL AVIATION	AL HABTOOR MURRAY	LINDNER	2007
NATIONAL BANK OF ABU DHABI - QIDFA	NATIONAL BANK OF ABU DHABI	ABU HUSSEIN	LINDNER	2007
AL WAHDA CITY	PRIVATE	CIVILCO	LINDNER	2007
EPC FOR RUWAIS IND. AREA	PRIVATE	TARGET ENGG.	LINDNER	2007
REPTON SCH. IN NAD AL SHEBA	PRIVATE	MTE MIDDLE EAST	LINDNER	2007
POLICE OPERATION ROOM	PRIVATE	ABU HUSSEIN	LINDNER	2007
MW-OU-123-07	DIRECTORATE OF MILITARY WORKS	CODE CONTG.	LINDNER	2007
ADOH - ABU DHABI OVERHEADS	ADOH - ABU DHABI OVERHEADS	LEIGHTON CONTG.	LINDNER	2007
AL BATEEN AIRBASE JOB J00716	DIRECTORATE OF MILITARY WORKS	ALGECO	LINDNER	2007
2 NOS. SUBSTATIONS AL AIN	ABU DHABI WATER & ELECTRICITY DEPT	POWER FLOW ENGG.	LINDNER	2007
MIGD PLANT AT LAYYAH POWER ST.		ACTCO	LINDNER	2007
BANIYAS TOWER	AL DAR PROPERTIES	EMIRATES LINK MALTAURO	LINDNER	2008

RAISED FLOOR- REFERENCES

PROJECT NAME	CLIENT	CONTRACTOR	MANUFACTURER	YEAR
RUWAIS REFINERY	ADNOC	EMCO BLDG. CONT.	LINDNER	2008
ASAB GAS DEV. PH-2	ADGAS	AL JABER ENERGY SERVICES	LINDNER	2008
STEEL PLANT AT MUSSAFAH	PRIVATE	GULF COMMERCIAL GROUP	LINDNER	2008
RUWAIS 3RD NGL TRAIN PROJECT	ADNOC	ARCHIRODON	LINDNER	2008
AL AIN HYPER MARKET	PRIVATE	BIN HARMAL CONTG.	LINDNER	2008
DUBAI METRO	DUBAI METRO	JT METRO JV JAPAN-TURKEY	LINDNER	2008
THE EXP. OF AUH INT'L AIRPORT	AUH CIVIL AVIATION	GATE TECHNOLOGY	LINDNER	2008
132/22 KV SUB. AT SAADIYAT ISLAND	ABU DHABI WATER & ELECTRICITY DEPT	POWER FLOW ENGG.	LINDNER	2008
ADGAS OFFSHORE ASS.	ADGAS	TARGET ENGG.	LINDNER	2008
DUBAI METRO	DUBAI METRO	LINDNER DEPA	LINDNER	2008
MW-SO-185-2007 AT THOUBAN	DIRECTORATE OF MILITARY WORKS	TRUST CONST.	LINDNER	2008
AL TAMEER DRY MORTAR PLANT	PRIVATE	CAPRIOLE CONST.	LINDNER	2008

RAISED FLOOR- REFERENCES

PROJECT NAME	CLIENT	CONTRACTOR	MANUFACTURER	YEAR
NEW 220 KV SUBST. MUSSAFAH ICAD 1	ABU DHABI WATER & ELECTRICITY DEPT	ACTCO	LINDNER	2008
NEW 132/33 GIS SUB. IN KHOR KHWAIR	ABU DHABI WATER & ELECTRICITY DEPT	AL BADR CONTG.	LINDNER	2008
TAWEELAH A 10 POWER PLANT EXT.	PRIVATE	ACTCO	LINDNER	2008
CONST. OF POLICE ST. AT DAS ISLAND	POLICE DEPT.	TARGET ENGG.	LINDNER	2008
SUBSTATION AT DELMA ISLAND	ABU DHABI WATER & ELECTRICITY DEPT	AL BADR CONTG.	LINDNER	2008
132/22KV SUB. AT YAS ISLAND	ABU DHABI WATER & ELECTRICITY DEPT	TARGET ENGG.	LINDNER	2008
BW INTERIORS OFFICE	BW INTERIORS	BW INTERIORS	LINDNER	2008
PERM. TRAINING CTR. & LAB.	PRIVATE	GRANITE CONST.	LINDNER	2008
COMPUTER ROOM	CHARLES DD&W	CHARLES DD&W	LINDNER	2008
OAG	PRIVATE	TARGET ENGG.	LINDNER	2008
DUBAI METRO RED LINE	DUBAI METRO	LINDNER DEPA	LINDNER	2008
MW/OU/136	DIRECTORATE OF MILITARY WORKS	ALGECO	LINDNER	2008

RAISED FLOOR- REFERENCES

PROJECT NAME	CLIENT	CONTRACTOR	MANUFACTURER	YEAR
400/132/22 KV STATION AT REEM ISLAND	ABU DHABI WATER & ELECTRICITY DEPT	ACTCO	LINDNER	2008
MISC. WORKS AT QSWEERAH	PRIVATE	RIBS GEN. CONS.	LINDNER	2008
ASAB ACCOM.	PRIVATE	GRANITE CONST.	LINDNER	2008
MW-328	DIRECTORATE OF MILITARY WORKS	GULF EAGLE	LINDNER	2008
MW/OU/048/08 ACAD. UNIVERSITY	DIRECTORATE OF MILITARY WORKS	ALGECO	LINDNER	2008
MW/AF/322 MINHAD AIRBASE	DIRECTORATE OF MILITARY WORKS	ALGECO	LINDNER	2008
MW/SO/509/07 HQ BLDG.	DIRECTORATE OF MILITARY WORKS	ALGECO	LINDNER	2008
MW/020	DIRECTORATE OF MILITARY WORKS	GULF EAGLE	LINDNER	2008
CARACAL/VECO. ENGG./ EGF	PRIVATE	ALPHA DATA	LINDNER	2008
ADNEC PHASE II	ADNEC	ARABTECH CONST.	LINDNER	2008
AIRPORT TRAF. CONT. COMLEX	ADAC	KUKBO	LINDNER	2009
AD-08 CENTRAL MARKET	PRIVATE	DHAFIR DEV.	LINDNER	2009

RAISED FLOOR- REFERENCES

PROJECT NAME	CLIENT	CONTRACTOR	MANUFACTURER	YEAR
A305 CIVIL WORKS-ADWEA	ABU DHABI WATER & ELECTRICITY DEPT	AL FARAA	LINDNER	2009
132/22KV SUB. @ SAADIYYAT ISLAND	ABU DHABI WATER & ELECTRICITY DEPT	HYUNDAI	LINDNER	2009
33/11 SUB. IN THE EASTERN REGION	ABU DHABI WATER & ELECTRICITY DEPT	BUTEC	LINDNER	2009
MW-IS-092-2008-399	DIRECTORATE OF MILITARY WORKS	STARS GEN. CONTG.	LINDNER	2009
AUH MEDIA ZONE	AUH MEDIA ZONE	CAPRIOLE CONST.	LINDNER	2009
REVAMP OF LEAN GAS STATION	GASCO	KHANSHEB HUSSEIN	LINDNER	2009
AL TAYER STOCKS	AL TAYER	AL TAYER	LINDNER	2009
EMAL - ANODE RODING SHOP	PRIVATE	TARGET ENGG.	LINDNER	2009
MW-OU-103-2008 CONST. WORKS AT MINA ZAYED	DIRECTORATE OF MILITARY WORKS	TRUST CONST.	LINDNER	2009
MW-AF-353-07	DIRECTORATE OF MILITARY WORKS	ALGECO	LINDNER	2009
AUH INT'L SHOOTING CLUB	PRIVATE	FIBREX	LINDNER	2009
AL DHAMA 400/220/33 KV GRID STATION	ABU DHABI WATER & ELECTRICITY DEPT	CODE CONTG.	LINDNER	2009

RAISED FLOOR- REFERENCES

PROJECT NAME	CLIENT	CONTRACTOR	MANUFACTURER	YEAR
LAB. & SAFETY BLDGS. AT RUWAIS REFINERY	ADNOC	CODE CONTG.	LINDNER	2009
MW-OU-103-2008 MINA ZAYED	DIRECTORATE OF MILITARY WORKS	TRUST CONST.	LINDNER	2009
400/132/22KV SUB. @ SAADIYAT ISLAND	ABU DHABI WATER & ELECTRICITY DEPT	LARSEN & TOUBRO	LINDNER	2009
SORBONNE UNIVERSITY	MUBADALA	AL HABTOOR-MURRAY	LINDNER	2009
AUH SHOOTING CLUB	AUH INT'L SHOOTING CLUB	FIBREX	LINDNER	2009
132/22 KV SUB. AT SAADIYAT ISLAND	ABU DHABI WATER & ELECTRICITY DEPT	TARGET ENGG.	LINDNER	2009
MW/AF/353/07	DIRECTORATE OF MILITARY WORKS	ALGECO	LINDNER	2009
C4AS STAGING ROOM	DIRECTORATE OF MILITARY WORKS	C4 ADVANCED SYSTEMS	LINDNER	2009
ALEC PLANT YARD	PRIVATE	ALEC	LINDNER	2009
AUDITORIUM IN ABU DHABI	PRIVATE	FOYER DÉCOR	LINDNER	2009
BOROUGE 2-POLYOLEFINS SYSTEMS	BOROUGE	AL JABER ENERGY SERVICES	LINDNER	2009
MW-AF-076-07	DIRECTORATE OF MILITARY WORKS	ALGECO	LINDNER	2009

RAISED FLOOR- REFERENCES

PROJECT NAME	CLIENT	CONTRACTOR	MANUFACTURER	YEAR
SKEIKH KHALIFA AIR COLLEGE	DIRECTORATE OF MILITARY WORKS	POLYGON ENGG. WORKS	LINDNER	2009
ADIC AL MUHAIRBY DATA CTR.	PRIVATE	ALPHA DATA	LINDNER	2009
NEW OFFICE BLDG. AT NPCC	NPCC	ORYX	LINDNER	2009
MW-RG-320-2005 AL AIN ROYAL GUARD	DIRECTORATE OF MILITARY WORKS	FORCE 10 U.A.E. LTD.	LINDNER	2009
TEMP. ADM. BLDG. AL AIN HOSPITAL	PRIVATE	ASCON	LINDNER	2009
YAS ISLAND HOTELS H1 & H2	PRIVATE	AL HABTOOR MURRAY	LINDNER	2009
ROYAL HOUSE	PRIVATE	AL FARAA	LINDNER	2009
TAKREER RESEARCH CENTRE	TAKREER	AMANA STEEL	LINDNER	2009
ADNOC RUWAIS HOUSING COMPLEX PH.1&2 - HOSPITAL	ADNOC	AL MERAIKHI	LINDNER	2009
MW/OU/348/07 NURSING ACADEMY	DIRECTORATE OF MILITARY WORKS	ALGECO	LINDNER	2009
ABU DHABI CULTURE & HERITAGE	PRIVATE	ALPHA DATA	LINDNER	2009
EMIRATES UNIVERSITY - AL AIN	PRIVATE	ID CONCEPT	LINDNER	2009

RAISED FLOOR- REFERENCES

PROJECT NAME	CLIENT	CONTRACTOR	MANUFACTURER	YEAR
DCP-LC2, RC1 & RC2 JEBEL ALI AIRP.	JEBEL ALI AIRPORT	KAMCO GEN. CONTG.	LINDNER	2009
11 KV SUB. AT SHK. KHALIFA PALACE	ABU DHABI WATER & ELECTRICITY DEPT	SCAN CONSTRUCTION	LINDNER	2009
UNION RAILWAY	PRIVATE	ALPHA DATA	LINDNER	2009
AD/190 AL HOSN PROJECT	DIRECTORATE OF MILITARY WORKS	THE CONTRACTORS	LINDNER	2009
OFFICE BLDG. FOR MINISTRY OF INTERIOR	MINISTRY OF INTERIOR	AL DIYAR GEN. CONTG.	LINDNER	2009
UNITED DESIGN INT'L	PRIVATE	ALPHA DATA	LINDNER	2009
MW/ZC/346/2007	DIRECTORATE OF MILITARY WORKS	FORCE 10 U.A.E. LTD.	LINDNER	2009
ADEC	ADEC	ITALIAN DESIGN	LINDNER	2009
AD/189 MALEEHAH PROJECT SHARJAH	DIRECTORATE OF MILITARY WORKS	THE CONTRACTORS	LINDNER	2010
NATIONAL REF LABORATORY	MUBADALA	AL FARAA	LINDNER	2010
ETIHAD PLAZA	ETIHAD AIRWAYS	AL ABERAH	LINDNER	2010
DATA CENTER AT AL NAHYAN CAMP	PRIVATE	AL ABERAH	LINDNER	2010

RAISED FLOOR- REFERENCES

PROJECT NAME	CLIENT	CONTRACTOR	MANUFACTURER	YEAR
NON PROCESS BLDG. AT RUWAIS	GASCO	ASCON	LINDNER	2010
SAADIYAT ISLAND REJIS HOTEL	PRIVATE	AL HABTOOR ENGG.	LINDNER	2010
SORBONNE UNIVERSITY	MUBADALA	AL HABTOOR MURRAY	LINDNER	2010
AL KHABISI WEDDING HALL	ADNEC	AL FARAA	LINDNER	2010
NPCC YARD SUBST. AT MUSSAFAH	ABU DHABI WATER & ELECTRICITY DEPT	ORYX	LINDNER	2010
400 KV GRID ST. AT SHUWEIHAT	ABU DHABI WATER & ELECTRICITY DEPT	AL BADER CONTG. CO.	LINDNER	2010
EXTENTION OF OFFICE BLOCK AT MINA ZAYED	PRIVATE	FORCE 10 U.A.E. LTD.	LINDNER	2010
MW-OU-187-2007	DIRECTORATE OF MILITARY WORKS	AL AIN OILFIELD SUPPLY SERV.	LINDNER	2010
TAKREER LAB & FIRE AND SAFETY BLDG.	TAKREER	CODE CONTG.	LINDNER	2010
STORM WATER PUMPING STATIONS - YAS ISLAND	ABU DHABI WATER & ELECTRICITY DEPT	SIX CONSTRUCT	LINDNER	2010
132/22KV SOWAH ISLAND	ABU DHABI WATER & ELECTRICITY DEPT	SQUARE GEN. CONTG.	LINDNER	2010
MW-LF-265-2009	DIRECTORATE OF MILITARY WORKS	AL AIN OILFIELD SERVICES	LINDNER	2010

RAISED FLOOR- REFERENCES

PROJECT NAME	CLIENT	CONTRACTOR	MANUFACTURER	YEAR
AL WAHDA CITY	PRIVATE	CIVILCO	LINDNER	2010
STORM WATER PUMPING STATIONS - YAS ISLAND	ALDAR	SIXCONSTRUCT	LINDNER	2010
NEW ACCOMODATION UNITS FOR P1 STAFF @ SAS AL NAKHL	ADNOC	AMANA STEEL	LINDNER	2010
TASNEEM GEN. CONTG.	PRIVATE	TASNEEM GEN. CONTG.	LINDNER	2010
SEA PALACE MAIN GATE HOUSE	FORSIGHT DEV. & PROJECT MANAGEMENT	TARGET ENGG.	LINDNER	2010
OAG	ADGAS	TARGET ENGG.	LINDNER	2010
OFFICE FOR DEFENCE AT MEENA PORT	PRIVATE	OKAZ GEN. CONT.	LINDNER	2010
132/22KV PRIM.SUBS. @ SAADIYYAT ISLAND	TRANSCO	HYUNDAI ENG.	LINDNER	2010
UNIVEST BUSINESS MACHINES	PRIVATE	UNIVEST BUSINESS MACHINES	LINDNER	2010
MW-AF-117-2009	DIRECTORATE OF MILITARY WORKS	CODE CONTG.	LINDNER	2010
J00447 ZAKHER PALACE UAE	H.H.SHEIKH SAIF's OFFICE	ALGECO	LINDNER	2010
H.H. THE CROWNED PRINCE DIWAN	H.H THE CROWN PRINCE PRIVATE MNGT.	FIBREX	LINDNER	2010

RAISED FLOOR- REFERENCES

PROJECT NAME	CLIENT	CONTRACTOR	MANUFACTURER	YEAR
A106	PRIVATE	AL BADER CONTG. CO.	LINDNER	2010
HOSPITAL FRANCO EMIRIEN	PRIVATE	TARGET ENGG.	LINDNER	2010
MW-OU-059-2009 OBSERVATION TOWERS	PRIVATE	AL RYUM CONT.	LINDNER	2011
AL BADIE HOTEL - CAPITAL CENTER	ADNEC	GROUP 3	LINDNER	2011
132/22 KV SOWAH ISLAND	ABU DHABI WATER & ELECTRICITY DEPT	SQARE GEN. COTG.	LINDNER	2011
OFFICE BDG @ LIWA MILITARY AIR BASE	DIRECTORATE OF MILITARY WORKS	FORCE 10 U.A.E. LTD.	LINDNER	2011
MW SAFRAN AIR BASE	DIRECTORATE OF MILITARY WORKS	OKAZ GEN. CONT.	LINDNER	2011
MW-AF-117-2009	DIRECTORATE OF MILITARY WORKS	CODE CONTG.	LINDNER	2011
SINOULF TOWER	ADNEC	GROUP 3	LINDNER	2011
MW/AF/241/2007 AT ZAYED MIL. CITY	DIRECTORATE OF MILITARY WORKS	TRUST CONST.	LINDNER	2011
NEW BLDG. IN LICENSE & TRAFFIC SECTION, AL AIN	POLICE DEPT.	HOUSING SERVICES CONTG.	LINDNER	2011
SOCIAL SUPPORT CENTRE BLDG. AL AIN	POLICE DEPT.	KHALIFA AL FAHED CONTG.	LINDNER	2011

RAISED FLOOR- REFERENCES

PROJECT NAME	CLIENT	CONTRACTOR	MANUFACTURER	YEAR
ETIHAD TOWERS	H.H. SHK SUROOR BIN MOH'D AL NAHYAN PROJECTS DEPT.	ARABIAN CONST. CO.	LINDNER	2011
SOCIAL SUPPORT CTR., AL AIN	MINISTRY OF INTERIOR	STARS GEN. CONTG.	LINDNER	2011
ABU DHABI LADIES CLUB	MINISTRY OF PUBLIC WORKS	MCM GROUP	LINDNER	2011
BANIYAS COMM. & RES. COMPLEX	BANIYAS INVESTMENT & DEVELOPMENT CO.	TARGET ENGG.	LINDNER	2011
AUH INT'L AIRPORT T1 PASSPORT	ADAC	GATE TECHNOLOGIES	LINDNER	2011
MW-DS-149-2010 CONSTRUCTION OF SIGNAL CORPS	DIRECTORATE OF MILITARY WORKS	SQUARE GEN. CONTG.	LINDNER	2011
MW-OU-288-2009	DIRECTOARTE OF MILITARY WORKS	FORCE 10 U.A.E. LTD.	LINDNER	2011
CORPS AT ZAYED MILITARY CITY, SWEIHAN	DIRECTORATE OF MILITARY WORKS	AL ABERI CONST.	LINDNER	2011
UPGRADING OF AL SALAM STREET TUNEL	DEPT. OF MUNICIPALITY	SAMSUNG-SAIF BIN DARWISH JV.	LINDNER	2011
HABSHAN 5 IGD	ADNOC	DESCON	LINDNER	2011
SEA WATER INTAKE PH. 3		TARGET ENGG.	LINDNER	2011
KAUTHER PROJECT, OMAN	PRIVATE	EL HASSAN ENGG.	LINDNER	2011

RAISED FLOOR- REFERENCES

PROJECT NAME	CLIENT	CONTRACTOR	MANUFACTURER	YEAR
MW-AF-117-2209	DIRECTORATE OF MILITARY WORKS	CODE CONTG.	LINDNER	2011
OFFICE BLDNG. AT LIWA MILITARY AIR BASE	DIRECTORATE OF MILITARY WORKS	FORCE 10 U.A.E. LTD.	LINDNER	2011
NOVOTEL & IBIS HOTEL	PRIVATE	CATIC	LINDNER	2011
AL SANAIYA POLICE STATION	ABU DHABI POLICE DEPT.	AL-ESLAH	LINDNER	2011
NATION TOWERS	PRIVATE	NPC-ARABTEC-JV	LINDNER	2011
RESEARCH & SECURITY STUDIES CENTER	SECURE	FORCE 10 U.A.E. LTD.	LINDNER	2011
SECURITY FENCING AT DAS ISLAND	PRIVATE	GRANITE CONST.	LINDNER	2011
SAHIL & SHAH FULL FIELD DEVELOPMENT	ADCO	CCC	LINDNER	2011
BRIGHTON COLLEGE	BLOOM	EMIRATES LINK MALTAURO	LINDNER	2011
132/22 KV SUBSTATION AT GATE DISTRICT	TRANSCO	COMMODORE CONTR.	LINDNER	2012
132/22 KV SUBSTATION AT NEW AIRPORT	TRANSCO	COMMODORE CONTR.	LINDNER	2012
MILLENIUM GOLF RESORT	PRIVATE	BELBADI	LINDNER	2012

RAISED FLOOR- REFERENCES

PROJECT NAME	CLIENT	CONTRACTOR	MANUFACTURER	YEAR
SECURITY FENCING AT DAS ISLAND	PRIVATE	GRANITE CONST.	LINDNER	2012
AL HOSN GAS	AL HOSN GAS	SARAYA INTREIOR DESIGN	LINDNER	2012
KHALIDIA SHINNING TOWER	FORESIGHT DEV. & PROJECT MANAGEMENT	TARGET ENGG.	LINDNER	2012
AL DHAFRA AIR BAS	DIRECTORATE OF MILITARY WORKS	CAPRIOLE CONSTRUCTION	LINDNER	2012
MISCELLANEOUS WORKS AT ASAB	ADGAS	EMCO MAINTENANCE CO.	LINDNER	2012
MW-LF-286-2010	DIRECTORATE OF MILITARY WORKS	KHALIFA AL FAHED CONTG.	LINDNER	2012
JW MARIOTT RESORT, ABU DHABI	JW MARIOTT	AL HABTOOR ENGG.	LINDNER	2012
TARIFF TRAFFIC PETROL STATION	ABU DHABI POLICE DEPT.	DISCOVERY CONTRACTING	LINDNER	2012
RUWAIS REFINERY EXPANSION, PACKAGE 3	TAKREER	A.C.C.	LINDNER	2012
AL RAWDHA PALACE , AL AIN	DOPA (DEPT. OF PRESIDENTIAL AFFAIRS)	A.C.C.	LINDNER	2012
JUMAIRAH ISLAND CLUSTER	PRIVATE	TARGET ENGG.	LINDNER	2012
SHUWEIHAT S 3 PROJECT	TRANSCO	AL HASSAN ENG. GEN. MAINT.	LINDNER	2012

RAISED FLOOR- REFERENCES

PROJECT NAME	CLIENT	CONTRACTOR	MANUFACTURER	YEAR
EXAMPLARY SCHOOL FOR POLICE AT AL FOUA	SECURE	FORCE 10 U.A.E. LTD.	LINDNER	2012
OFFICE BLDG. AND WAREHOUSE AT MAFRAQ	PRIVATE	ARCAN	LINDNER	2012
MILLITARY COMMAND BLDG. AT MAHAWI	DIRECTORATE OF MILITARY WORKS	EMIRATES AND AL NASR BLDG.	LINDNER	2012
FERTIL 2 AMONIA/UREA EXPANSION PROJECT	FERTIL	SAMSUNG	LINDNER	2012
BLOOM GARDEN	BLOOM	EMIRATES LINK MALTAURO	LINDNER	2012
RUWAIS 4 TH NGL TRAIN PROJECT	GASCO	A.C.C.	LINDNER	2012
SHAH GAS DEVELOPMENT PACKAGE 4 U & O	GASCO	SAMSUNG ENG.	LINDNER	2012
NW-NF-031-2012 FUJAIRAH NAVAL BASE	DIRECTORATE OF MILITARY WORKS	AL FIRAS GEN. CONTG.	LINDNER	2012
MW-OU-151-2010 AL AIN	DIRECTORATE OF MILITARY WORKS	YOUSEF GEN. CONTG.	LINDNER	2012
STRATEGIC WATER STORAGE/RECOVERY PROJECT IN LIWA	ABU DHABI WATER & ELECTRICITY DEPT.	A.C.C.	LINDNER	2012
QUSAHWIRA FIELD DEV.	GASCO	C.C. ENGG. & PROCUREMENT	LINDNER	2012
BOROUGE 3 LDPE - L3 UNITS & BLDGS.	BOROUGE	KETTANEH	LINDNER	2012

RAISED FLOOR- REFERENCES

PROJECT NAME	CLIENT	CONTRACTOR	MANUFACTURER	YEAR
BOROUGE NEW TRAINING CENTRE	BOROUGE	TARGET ENGG.	LINDNER	2012
MW-OU-167-2010	DIRECTORATE OF MILITARY WORKS	AL DIYAR GEN. CONTG.	LINDNER	2012
LAGOONA BEACH, AJMAN	HOTEL & TOURISM	SEIDCO GEN. CONT	LINDNER	2012
NATURAL GAS SUPPLY LINE FROM GASCO -FERTIL II	GASCO	ALMOAYYED ELECTRICAL EQUIP.	LINDNER	2013
NEW LABORATORY BLDG. AT HABSHAN 5	GASCO	EMCO	LINDNER	2012
HYDRA OFFICES PROJECT	PRIVATE	BOUDOIR INTERIORS	LINDNER	2012
RESIDENTIAL BUILDING RAWDHAT, ABU DHABI, E-48, C-77	AABAR INVESTMENT	TASAMEEM STX CONSTRUCTION	LINDNER	2013
NEW ASAB ACC. COMPLEX PH. III	GASCO	ASCON	LINDNER	2013
MW-11039-C001	DIRECTORATE OF MILITARY WORKS	YOUSEF GEN. CONT	LINDNER	2013
FUT. SCH. PH. III PACK. 3 BATEEN, ALIYAH & RIFAA - AL AIN	MUSANADA	NAEL GEN. CONT. EST	LINDNER	2013
132/22KV SUBS AT MOH'D BIN ZAYED	TRANSCO	COMMODORE CONTR.	LINDNER	2013
132/22KV SUBS AT AL WATHBA	TRANSCO	COMMODORE CONTR.	LINDNER	2013

RAISED FLOOR- REFERENCES

PROJECT NAME	CLIENT	CONTRACTOR	MANUFACTURER	YEAR
AL DHAID PALACE, FALAJ AL MOALLA	PRIVATE	BAIT AL NOKHADA TENTS & FABRIC	LINDNER	2013
RUWAIS SULPHUR HANDLING	GASCO	AL JABER ENERGY SERVICES	LINDNER	2013
FUT. SCH. PH. III PACK. 2 SHAMKHA & BANIYAS AT ABU DHABI	MUSANADA	SEIDCO GEN. CONT. CO	LINDNER	2013
PUMPHOUSE BUILDING IN HABSHAN	GASCO	CIVILTECH CONT. CO	LINDNER	2013
HABSHAN SULPHUR PROJECT	GASCO	DODSAL	LINDNER	2013
AL WATHBA ACCOMODATION	MUSANADA	GUPCO	LINDNER	2013
NGL PIPELINE PUMPS & ALLIED WORKS AT ASAB 0	GASCO	ACC	LINDNER	2013
PALACE COMPLEX AT AL NABBAGH, AL AIN	DEPT. OF PRESIDENTIAL AFFAIRS	ALGECO	LINDNER	2013
MW-11098-C001 @ RAK	DIRECTORATE OF MILITARY WORKS	KHALIFA AL FAHED CONT.	LINDNER	2013
LOUVRE -ABU DHABI GALLERY MOCK UP SAADIYAT ISLAND	TDIC	FINO INTERNATIONAL	LINDNER	2013
FUT. SCH. PH. 4 PACK. 2 NEIMA - AL AIN	MUSANADA	NAEL GEN. CONT.	LINDNER	2013
FUTURE SCHOOL PHASE 4 PKG. 2 SALAMAT- AL AIN	MUSANADA	NAEL GEN. CONT.	LINDNER	2013

RAISED FLOOR- REFERENCES

PROJECT NAME	CLIENT	CONTRACTOR	MANUFACTURER	YEAR
POLICE STATION IN INDUSTRIAL AREA - FUJ	MINISTRY OF PUBLIC WORKS	AL QANTARA GEN. CONT.	LINDNER	2013
ASAB 2 220 KV SWITCHING STATION LOT 1.2 CONTRACT NO. 11448	TRANSCO	CODE CONTRACTING	LINDNER	2013
NAJMAT RESIDENTIAL AT PLOT C1 AT REEM ISLAND	UNION NATIONAL BANK	FIBREX	LINDNER	2013
NAJMAT RESIDENTIAL AT PLOT C4 AT REEM ISLAND	AL WIFAQ FINANCE COMPANY	FIBREX	LINDNER	2013
REFURBISHMENT WORK FOR ABU DHABI MUNCIPALITY - AL WATHBA ACCOMMODATION	MUSANADA	GUPCO	LINDNER	2013
250 ACCOMMODATION FOR CONTRACTOR STAFF AT ASAB	GASCO	EMCO	LINDNER	2013
QNB OFFICE FITOUT TEAM B WEST BAY, QATAR	PRIVATE	GULF CONTRACTING-QATAR	LINDNER	2014
MULTIPURPOSE HALL AT AL SADD SPORTS CLUB, DOHA, QATAR	QATAR OLYMPIC COMMITTEE	AKTOR, QATAR	LINDNER	2014
ETIHAD CATERING SERVICES -AUH	ETIHAD AIRWAYS	ETIHAD AIRWAYS	LINDNER	2014
TAHA INVESTMENT GROUP HEAD QUARTERS, DUBAI	TAHA INVESTMENT GROUP	TAHA INVESTMENT GROUP	LINDNER	2014
LOUVRE -ABU DHABI MUSEOGRAPHY MOCK UP SAADIYAT ISLAND	TDIC	FINO INTERNATIONAL	LINDNER	2014
ZIRKU COMMAND & CONTROL ROOM, POST OSAT WORKS	ZADCO	GRANITE	LINDNER	2014

RAISED FLOOR- REFERENCES

PROJECT NAME	CLIENT	CONTRACTOR	MANUFACTURER	YEAR
220/33/11 KV SUBSTATION AT ZAKHER GRID, AL AIN	TRANSCO	LARSEN & TOUBRO CONSTRUCTION	LINDNER	2014
220/33 KV GRID STATION IN AIN AL FAYDHA	TRANSCO	LARSEN & TOUBRO LTD	LINDNER	2014
NEW PIPELINE DIV. MANAGEMENT BLDG, MUSSAFAH	GASCO	ALGECO	LINDNER	2014
GHANADA ISLAND PALACE	DEPARTMENT OF PRESIDENTIAL AFFAIRS	ALGECO	LINDNER	2014
ACCOMMODATION & ADMINISTRATION BUILDING AT QUSAHWIRA FIELD DEV. , AL AIN	ADCO	AL HABTOOR LEIGHTON	LINDNER	2014
MSHEIREB DOWNTOWN DOHA PHASE 3	MSHEIREB	OBAYASHI HBK JV	LINDNER	2014
CENTRAL TELEPHONE EXCH. BLDG, AL AIN	POLICE GHQ	AL QANTARA GEN.CONT	LINDNER	2014
ADMA OPCO FLARES MODIFICATION /REVAMP AT DAS ISLAND	ADMA OPCO	TARGET ENG.	LINDNER	2014
TECHNICAL TRAINING CENTER FOR ADMA-OPCO AT SHAMKHA	ADMA OPCO	AMANA STEEL BUILDING & CONT.	LINDNER	2014
ABU DHABI CO-OPERATIVE SHOPPING CENTER AT AL SHAMKHA CITY	CO OPERATIVE SOCIETY	POLENSKY & ZOELLNER -AUH	LINDNER	2014
PRESIDENTIAL PALACE	EXECUTIVE COMMITTEE FOR PRESIDENTIAL PALACE	CONSOLIDATED CONT. CO.	LINDNER	2014
11 KV DISTRIBUTION NETWORKS & BACKUP GENERATORS FOR NEW PRESIDENTIAL PALACE	ABU DHABI DISTRIBUTION COMPANY	LARSEN & TOUBRO	LINDNER	2014

RAISED FLOOR- REFERENCES

PROJECT NAME	CLIENT	CONTRACTOR	MANUFACTURER	YEAR
FUTURE SCHOOL PHASE 4, PACKAGE 6 CHINEESE SCHOOL	MUSANADA	AL FARAA GEN. CONT.	LINDNER	2014
HIGH PRESSURE PIPELINE CONNECTION FOR NGV FILLING STATIONS PHASE II FOR GASCO	GASCO	GALAXY ENERGY GEN. CONT	LINDNER	2014
MINA ZAYED WAREHOUSE CONVERSION 420,421 & 422 ABU DHABI	SALAMA BINT HAMDAN AL NAHYAN FOUNDATION	AL TAYER STOCKS	LINDNER	2014
FLOW ASSURANCE PROJECT ONSHORE EPC2 AT SALWA INDUSTRIAL AREA, QATAR	RASGAS COMPANY LTD	MEDGULF CONSTRUCTION CO.	LINDNER	2014
IPIC HEAD QUARTERS BUILDING AT PLOT P10, ABU DHABI	IPIC	SPECIALIZED MARKETING CO.	LINDNER	2014
YAS MINA ZAYED	GASCO	OBAID AL QUBAISI TRANSPORT	LINDNER	2014
COMMUNITY HOSPITAL AT AL SILAA	SEHA	AL FARAA GEN. CONT	LINDNER	2014
MADAR INTERNATIONAL SCHOOL, AL AIN	MADAR INTERNATIONAL SCHOOL	MADAR INTERNATIONAL SCHOOL	LINDNER	2015
BARAKA NUCLEAR POWER PLANT- SWITCHYARD AREA BUILDING	TRANSCO	SEOBON CONSTRUCTION	LINDNER	2015
NGL3 CCR RENOVATION WORKS AT MESAIEED, QATAR (NGLR3 CCR)	QATAR PETROLEUM	ABB LLC	LINDNER-RAISED FLOOR, FALSE CEILING	2015
RAS LAFFAN CONDENSATE REFINERY EXPANSION - PHASE 2 (LR2), QATAR	QATAR PETROLEUM	CONSOLIDATED CONT. CO. - QATAR	LINDNER	2015
CIVIL DEFENCE CENTER BUILDING AT SAS AL NAKHL	ADNOC	AMANA CONTRACTING	LINDNER	2015

RAISED FLOOR- REFERENCES

PROJECT NAME	CLIENT	CONTRACTOR	MANUFACTURER	YEAR
GLOBAL INTERNATIONAL INDIAN SCHOOL AT BANIYAS, AUH	GLOBAL INDIAN INTERNATIONAL	BAREK ENGINEERING	LINDNER	2015
ADGAS LG7 POWER GENERATION UNIT AT DAS ISLAND	ADGAS	TARGET ENG. CONSTRUCTION	LINDNER	2015
SUPREME COUNCIL FOR NATIONAL SECURITY BUILDING RAS AL AKDAR- ABU DHABI	SUPREME COUNCIL FOR NATIONAL SECURITY	SITE TECHNOLOGY	LINDNER	2015
DELMA ISLAND AIRPORT DEVELOPMENT, ABU DHABI	ADAC	MASRI ENG. CONT. CO	LINDNER	2015
DAS DISASTER COMPUTERS ROOM AT TELECOM BUILDING, DAS ISLAND	ADMA OPCO	GRANITE CONSTRUCTION	LINDNER	2015
132/220/400 KV SUBSTATION NO. N-7355-2 AT MUSSAFAH, ABU DHABI	TRANSCO	EL RACE CONSTRUCTION	LINDNER	2015
YAS ISLAND DEVELOPMENT ZONE K	ALDAR PROPERTIES	TROJAN GEN. CONT.	LINDNER	2015
SHAH NEW ACCOMMODATION COMPLEX	ADCO	AL JABER ENERGY SERVICES	LINDNER	2015 & 2017
EXPANSION OF AVIATION FUEL DEPOT AT ABU DHABI INT'L AIRPORT - AUH	TAKREER/ADNOC	LARSON & TOUBRO	LINDNER	2015
SHEIKH KHALIFA MEDICAL CITY - DIALYSIS CENTRE	SEHA	AL FARAA GEN. CONT.	LINDNER	2015
GHAYATHI COMMUNITY HOSPITAL IN WESTERN REGION	MUSANADA	AMANA /WALBRIDGE (JV)	LINDNER	2015
RESIDENTIAL & COMMERCIAL TOWER AT PLOT P5, W4 (BW01), AUH	PROPERTY MANAGEMENT FOUNDATION	ALI MOOSA & SONS CONT.	LINDNER	2015

RAISED FLOOR- REFERENCES

PROJECT NAME	CLIENT	CONTRACTOR	MANUFACTURER	YEAR
SAADIYAT ROTANA HOTEL & RESORT COMPLEX, AUH	ROTANA HOTEL/TCA	ALI & SONS AND KIER	LINDNER	2015
RUWAIS HOUSING COMPLEX PHASE III - NEW HOSPITAL (RUWAIS HOSPITAL)	ADNOC	CODE CONTRACTING	LINDNER	2015
RESIDENTIAL BUILDING ON PLOT 392-325, DUBAI MARINA	CAPITAL UNITED LLC	AL AMAR ENG	LINDNER	2015
MIRFA INDEPENDENT WATER AND POWER PROJECT, ABU DHABI	MIRFA INTERNATIONAL POWER & WATER COMPANY	SEOBON CONSTRUCTION	LINDNER	2015 & 2017
AL WAFRA OFFICE BUILDING, NAJMAT, ABU DHABI	WAFRA REAL ESTATE	SEIDCO GEN. CONT.	LINDNER	2015
ADDC BAWABAT AL SHARQ MALL	ADDC	MAPCO	LINDNER	2015
HABSHAN MAINTENANCE JOB, ABU DHABI	GASCO	EMCO, ABU DHABI	LINDNER	2015
TAREK BIN ZIAD SCHOOL- AL SADD, DOHA, QATAR	PRIVATE ENGINEERING OFFICE	BOJAMHOOR TRADING & CONTRACTING CO.	LINDNER	2015
FUTURE SCHOOL PHASE 6, PACKAGE 6 AL WAHA AL YAHAR SCHOOL	MUSANADA/ADEC	NAEL GENERAL CONT.	LINDNER	2016
FUTURE SCHOOL PHASE 6, PACKAGE 7 AL SHUAIBAH	MUSANADA/ADEC	NAEL GENERAL CONT.	LINDNER	2016 & 2017
FUTURE SCHOOL PHASE 6, PACKAGE 8 AL QUAA	MUSANADA/ADEC	NAEL GENERAL CONT.	LINDNER	2016
3X20 MW BESS SUBSTATIONS AT ICAD AND SILA	ADDC	LINDENBERG EMIRATES	LINDNER	2016 & 2017
AL AIN HOSPITAL, ADMINISTRATION BUILDING	SEHA	ARABTEC/SANJOSE (JV)	LINDNER	2016 & 2018

RAISED FLOOR- REFERENCES

PROJECT NAME	CLIENT	CONTRACTOR	MANUFACTURER	YEAR
SARAYA RESIDENTIAL TOWER R14, C34 -ABU DHABI	AL NAHDA INVESTMENT	PIVOT ENGG. & CONST.	LINDNER	2016
AL BUSTAN SPECIALITY HOSPITAL	AL BUSTAN HOSPITAL	ENGG. UNIT CONT (ANTRA)	LINDNER	2016
THE FIRST AVENUE MALL & HOTEL ON PLOT NO. 6742010, AL HEBIAH FIRST, DUBAI	RADISSON SAS HOTEL & RESORT	PIVOT ENGG. & CONT.	LINDNER	2016
BANK OF SHARJAH, MUSSAFAH BRANCH	BANK OF SHARJAH	MCM GROUP OF COMPANIES	LINDNER	2016
132/11 KV SUBSTATIONS FOR DEWA AT UMSQEMRD, DUBAI	DEWA	LARSEN & TOUBRO	LINDNER	2016
132/11 KV SUBSTATIONS FOR DEWA AT KHOR, DUBAI	DEWA	LARSEN & TOUBRO	LINDNER	2016 & 2017
NEW ADMIN. COMPLEX & FIRE STATION AT SHAH	ADCO	TARGET ENG.	LINDNER	2016 & 2018
UPPER ZAKUM UZ750 ISLANDS SURFACE FACILITIES -EPC2	ZADCO	NAEL & BIN HARMEL HYDROEXPORT EST	LINDNER	2016 & 2018
EPC WORKS FOR NEW CENTRAL CONTROL BUILDING AND HMI UPGRADE	ADGAS	CONSOLIDATED CONTRACTORS INT'L CO.	LINDNER	2016 & 2018
PGC NCO'S OR MESS HALL & CLUB, SAS AL NAKHL	PRESIDENTIAL GUARD COMMAND	AL FARAA GEN. CONT.	LINDNER	2016
NEW COLLEGE OF PHARMACY, QATAR	QATAR UNIVERSITY	SHAPOORJI PALLONJI	LINDNER	2016
BLACK POWDER MANAGEMENT -NEW SEPARATION & FILTRATION SYSTEM, SHUWEIHAT	GASCO	AL HASSAN ENG.	LINDNER	2016
PALM TOWER HOTEL AND RESIDENCES, DUBAI	NAKHEEL	TROJAN GEN. CONT.	LINDNER	2016

RAISED FLOOR- REFERENCES

PROJECT NAME	CLIENT	CONTRACTOR	MANUFACTURER	YEAR
CABLE CONNECTION TO AL QAFFAY ISLAND IN WESTERN REGION ABU DHABI	DUBAI ELECTRICITY & WATER DEPT	GHANTOOT TRANS & GEN. CONT.	LINDNER	2016
MW-15097-B001 WESTERN REGION	DIRECTORATE OF MILITARY WORKS	STEEL CONST. & ENG. CO	LINDNER	2016
AL BUSTAN MIXED USE DEVELOPMENT	CPM	UNIQUE OPTIONS INTERIORS	LINDNER	2016
132/11 SUBSTATION AT HDQNSHBA ,DUBAI	DUBAI ELECTRICITY & WATER DEPT	LARSEN & TOUBRO LTD	LINDNER	2016
RESIDENTIAL TOWER @C23/W5 CORNISH, ABU DHABI	LINK INTERNATIONAL PROPERTIES	ARABIAN CONSTRUCTION CO.	LINDNER	2016
ZADCO NEW CENTRAL RECORD MANAGEMENT IN ESNAAD, AUH	ZADCO/ESNAAD	SPARK BUILDING CONT.	LINDNER	2016
CIVIL MAINT. SUPPORT FACILITIES AT RUWAIS	GASCO	GRANITE CONSTRUCTION.	LINDNER	2016
SOLAR INNOVATION CENTRE, DUBAI	DUBAI ELECTRICITY & WATER DEPT	HADEED EMIRATES CONT.	LINDNER	2016
ADNOC DISTRIBUTION LPG PLANT	ADNOC	EMIRATES ELECTRICAL INSTRUMENT	LINDNER	2016
LNG TANKER LOADING FACILITY - RLESC QATAR	-	MEDGULF CONSTRUCTION, QATAR	LINDNER	2016
NGLR 4 CCR RENOVATION WORKS AT MESAIEED, QATAR	QATAR PETROLEUM	ABB LLC	LINDNER	2016
MSHEIREB-DOWNTOWN DOHA PHASE 3, QATAR	MSHEIREB	OBAYASHI HBK JV	LINDNER	2016

RAISED FLOOR- REFERENCES

PROJECT NAME	CLIENT	CONTRACTOR	MANUFACTURER	YEAR
MW-13014-C001	DIRECTORATE OF MILITARY WORKS	FRONTIER WORKS ORGANIZATION	LINDNER	2016
LOOPS AUTOMATION FACTORY, SUDAN	LOOPS AUTOMATION FACTORY	FORCE 10 UAE LTD	LINDNER	2016
VIOLATORS AND FOREIGNERS SECTION AT AL WATHBA PRISON	MUSANADA	KHALIFA AL FAHED CONT.	LINDNER	2016
MINISTRY OF INTERIOR, ABU DHABI	MINISTRY OF INTERIOR	SITE TECHNOLOGY, AUH	LINDNER	2016
AUDEX FUJAIRAH (G+4 Admin Building, Fujairah (BPGIC Fujairah Terminal (Phase 1)	BOROUGE PETROLEUM & GAS INVESTMENT	EAST COAST CONT.	LINDNER	2016
TAWEELAH GAS COMPRESSOR STATION	GASCO	AL JABER GROUP	LINDNER	2017
MW-13093-COO3	DIRECTORATE OF MILITARY WORKS	FRONTIER WORKS	LINDNER	2017
JEBEL ALI POWER STATION M EXTENSION, DUBAI	DUBAI ELECTRICITY & WATER DEPT	SIEMENS/LAING O'ROURKE/ATLAS IND. EQUIP	LINDNER	2017
MW-15135-B001, GHANTOOT NAVAL AIRFIELD	DIRECTORATE OF MILITARY WORKS	AL NISR	LINDNER	2017
AL DABBIYA SURFACE FACILITIES	ADCO	ARABIAN CONSTRUCTION CO	LINDNER	2017
MOPA NURSERY	MINISTRY OF PRESIDENTIAL AFFAIRS	GUPCO	LINDNER	2017
P41 WAREHOUSE DAFZA, DUBAI	DUBAI AIRPORT FREEZONE (DAFZA)	BW INTERIORS	LINDNER	2017
ABU DHABI MARINA BLOOM DEVELOPMENT C7 - C102, W 35	ABU DHABI MARINA/ BLOOM EMIRATES PROPERTIES	AL SHAFAR GEN. CONT.	LINDNER	2017

RAISED FLOOR- REFERENCES

PROJECT NAME	CLIENT	CONTRACTOR	MANUFACTURER	YEAR
CITIZEN AFFAIRS DIVISION BUILDING	CROWN PRINCE COURT	TARGET ENG. CONT.	LINDNER	2017
CITY OF LIGHT, SECTOR RT3, PLOT C15. AL REEM ISLAND	TAMOUEH INVESTMENT	TROJAN GEN. CONT.	LINDNER	2017
AL WATHBA DESERT RETREAT PROJECT 106, ABU DHABI	SH. MANSOUR BIN ZAYED AL NAHYAN	GHANTOOT	LINDNER	2017
AL DABBIYA SURFACE FACILITIES DEVELOPMENT PHASE 3, BUILDING NO.5 AUH	ADCO	MISSION GEN. SERVICES	LINDNER	2017
BATEEN MARINA RESORT DEVELOPMENT W35, C103, AUH	SH. MOHAMMED BIN KHALIFA BIN ZAYED AL NAHYAN	ALI & SONS CONT.	LINDNER	2017
132/11 SUBSTATION AT RAS AL KHOR, DUBAI	DUBAI ELECTRICITY & WATER DEPT	LARSEN & TOUBRO	LINDNER	2017
ATLAS SECURITY	PRIVATE	ATLAS SECURITY	LINDNER	2017
BCMP, AL AIN - TELCO	PRIVATE	TARSHIHA ELECTRICAL CONT. (TELCO), ABU DHABI	LINDNER	2017
ADNOC PANORAMA	ADNOC	SPAZIO DESIGN & BUILD INT'L , AUH	LINDNER	2017
RESIDENTIAL BLDG. FOR AQIL JANAHI, AL BATEEN	PRIVATE	AL SUWEIDI & SHAMS	LINDNER	2017
BBAC OFFICE IN SKY TOWER	BBAC	AL BANI ESTABLISHMENT	LINDNER	2017
MUBADALA NRL ICAD-2	PRIVATE	D DIVISION INTERIORS	LINDNER	2017

RAISED FLOOR- REFERENCES

PROJECT NAME	CLIENT	CONTRACTOR	MANUFACTURER	YEAR
FUTURE SCHOOL PHASE 6, Pkg 14 AT DELMA ISLAND, AUH	ADEC/MUSANADA	NAEL GEN. CONT.	LINDNER	2017
AL NOOR TOWER DEV. C7, REEM ISLAND	ROYAL GROUP	TROJAN GEN. CONT.	LINDNER	2017
HSBC OFFICE TOWER	HSBC/GULF RESOURCES DEV.	ADVANCED INDUSTRIES GROUP	LINDNER	2017
MEERA SHAMS, AL REEM ISLAND, ABU DHABI	ALDAR PROPERTIES	FIBREX CONSTRUCTION GROUP-AUH	LINDNER	2017
TAWEELAH GAS COMPRESSOR STATION, AUH	GASCO	AL JABER ENERGY	LINDNER	2017
132/11 KV SUBSTATION AT JUMEIRAH VILLAGE, DUBAI	DUBAI ELECTRICITY & WATER DEPT	LARSEN & TOUBRO	LINDNER	2017
PGC-C-100-P4-2013	PRESIDENTIAL GUARD COMMAND	SEIDCO GEN. CONT	LINDNER	2017
132/11 SUBSTATION AT MDNAMBR, DUBAI	DUBAI ELECTRICITY & WATER DEPT	LARSEN & TOUBRO	LINDNER	2017
132/11 KV SUBSTATION AT NAD AL SHIBA 3RD, DUBAI	DUBAI ELECTRICITY & WATER DEPT	LARSEN & TOUBRO	LINDNER	2017
TORNADO CORPORATE TOWER	PRIVATE	MMG FACILITY MANAGEMENT	LINDNER	2017
FIRE STATION NO. 06 AT RAS LAFFAN, QATAR	QATAR PETROLEUM	INSHA CO. , QATAR	LINDNER	2017

RAISED FLOOR- REFERENCES

PROJECT NAME	CLIENT	CONTRACTOR	MANUFACTURER	YEAR
AL BROOQ RES. TOWER	KBM GROUP	AL SEAL CONT	LINDNER	2017
SYDRA HOSPITAL	QATAR FOUNDATION	INTERPROGETTI	LINDNER	2017
ORYX INT'L SCHOOL	QATAR AIRWAYS	BOOM GEN. CONT.	LINDNER	2017
AL MEENA RES. & COM. TOWER PLOT C56, 57, C58 SECTOR E14, ABU DHABI	FOUNDATION PROPERTY MANAGEMENT	A.C.C.	LINDNER	2018
JEBEL ALI SEWAGE TREATMENT	DUBAI MUNICIPALITY	BESIX-LARSEN AND TOUBRO	LINDNER	2018
132/11 KV SUBSTATION AT CANAL GATE	DUBAI ELECTRICITY & WATER DEPT	LARSEN & TOUBRO	LINDNER	2018
132/11 KV SUBSTATION AT QANAT	DUBAI ELECTRICITY & WATER DEPT	LARSEN & TOUBRO	LINDNER	2018
JAMEEL ART CENTER	JAMEEL ART CENTER	STRABAG	MEDFLOOR	2018
132/11 SUBST. AT AL QUSAIS, DUBAI	DUBAI ELECTRICITY & WATER DEPT	LARSEN & TOUBRO	LINDNER	2018
132/11 SUBST. AT FAB METRO, DUBAI	DUBAI ELECTRICITY & WATER DEPT	LARSEN & TOUBRO	LINDNER	2018
132/11 SUBST. AT DIP, DUBAI	DUBAI ELECTRICITY & WATER DEPT	LARSEN & TOUBRO	LINDNER	2018
BUILDING AT AL RAHA BEECH AT RBW5, PLOT 13	ADCE	AL DIYAR GEN. CONTG.	LINDNER	2018
AL DABBIYA SURFACE FACILITIES PHASE III- CCR BUILDING	ADCO	AESTHETIX	LINDNER	2018

RAISED FLOOR- REFERENCES

PROJECT NAME	CLIENT	CONTRACTOR	MANUFACTURER	YEAR
OFFICE IN SHARJAH	SOUTH HILL EAST	INDUSTRIAL INNOVATION GROUP	LINDNER	2018
CMW-16076-C001	DIRECTORATE OF MILITARY WORKS	ASWAR ENGG. & GEN. CONT.	LINDNER	2018
ADMINISTRATION BUILDING BANIYAS (AWQAF), ABU DHABI	GENERAL AUTHORITY OF ISLAMIC AFFAIRS AND ENDOWMENTS	ZAROONI TRANSEMIRATES GEN.CONT. CO-AL AIN	LINDNER	2018
TIARA UNITED TOWERS (aka LILIAN TOWERS IN BUSINESS BAY (BUSINESS BAY HOTEL)	TASAMEEM INVESTMENT PROPERTIES	ARABTEC	LINDNER	2018
PARKING LOT DUBAI MEDIA CITY	TECOM GROUP	DELTA AL EMARATE	LINDNER	2018
ISLAND TOWER RES. HARBOUR GATE	EMAAR	TROJAN GEN. CONTG.	MEDFLOOR	2018
PRIMARY HEALTH CARE CTR. AT MASAFI	MINISTRY OF HEALTH	AL ABDOULI CONTG.	LINDNER	2018
ROUTE 2020 METRO RAIL R70, R71 & R72	RTA	AL REYAMI INTERIORS	LINDNER	2018
CROWN PRINCE COURT, 14 BUILDINGS PRIVATE DEV. PLOT C54, C67 ABU DHABI	CROWN PRINCE COURT	CAPRIOLE CONST.	LINDNER	2018
ROUTE 2020 METRO RAIL R73, R74, R76 & NHT	RTA	ACCIONA INFRASTRUCTURE	LINDNER	2018
IMMIGRATION BLDG. UAQ	UAE MINISTRY OF INFRASTRUCTURE DEVELOPMENTS	AL RAWABI GEN. CONTG.	LINDNER	2018

RAISED FLOOR- REFERENCES

PROJECT NAME	CLIENT	CONTRACTOR	MANUFACTURER	YEAR
132/11 SUBST. AT MANKHOUL, DUBAI	DUBAI ELECTRICITY & WATER DEPT	LARSEN & TOUBRO	LINDNER	2018
AL THOWIMA RESIDENTIAL TOWER #373-4530, DUBAI	MERAAS DEVELOPMENT	AL SHAFAR GEN. CONTG.	LINDNER	2018
HOTEL AL BARSHA, DUBAI	ABDULLA SAEED AMER HAMAD ALNEYADI	ARABTEC	LINDNER	2018
MAMSHA AL SAADIYAT ISLAND, ABU DHABI	TDIC	PIVOT SAN JOSE JV	LINDNER	2018
MY CITY CENTER MASDAR	MAJID AL FUTTAIM	AMANA CONTG. & STEEL	LINDNER	2018
132/11 KV SUBSTATION AT KHAWANEEJ	DEWA	LARSEN & TOUBRO	LINDNER	2018
132/11 KV SUBSTATION AT KHALIFA	TRANSCO	LARSEN & TOUBRO	LINDNER	2018
132/11 KV SUBSTATION AT TOWAYYA	TRANSCO	LARSEN & TOUBRO	LINDNER	2018
CMW-17099-C001	DIRECTORATE OF MILITARY WORKS	FRONTIER WORKS ORGAN.	MEDFLOOR	2018
G + 2 IMMIGRATION BLDG. SHJ. (GENERAL ADMINISTRATION FOR RESIDENCY & FOREIGN AFFAIRS)	GOVERNMENT OF SHARJAH	ASWAR ENGG. & GEN. CONT.	LINDNER	2018
HALIBA FIELD DEV.	AL DHAFRA PETROLEUM OPERATIONS	LARSEN & TOUBRO HYDROCARBON	LINDNER	2018
AL DHAFRA HALIBA FIELD DEV. PROJECT	AL DHAFRA PETROLEUM OPERATIONS	ALI & SONS	LINDNER	2018

RAISED FLOOR- REFERENCES

PROJECT NAME	CLIENT	CONTRACTOR	MANUFACTURER	YEAR
AL THOWIMA TOWER AL BARSHA	MERAAS DEVELOPMENT	AL SHAFAR NAT. CONTG.	LINDNER	2019
KHOR AL RAHA DEV'T.	AL NASSER PROPERTIES	GHANTOOT TRANSPORT & GEN. CONTG.	LINDNER	2019
BLUE DIAMOND HOTEL	PRIVATE	REAMNA INT'L FZCO	LINDNER	2019
PARAGON MALL	TAMOUH	SEG EMIRATES	MEDFLOOR	2019
Y TOWER REEM ISLAND	PRIVATE	SEG EMIRATES	LINDNER	2019
132-11KV QUSAIS SUBSTATION	DEWA	GHANTOOT TRANSPORT & GEN. CONTG.	LINDNER	2019
ADNOC BUSINESS CENTER KHALIDIYA	ADNOC	GHANTOOT GROUP	LINDNER	2019
NEW HEALTH CTRS. ABU HAIL/AL QUSAIS/UMM SUQEIM	GOVERNMENT OF DUBAI	GHANTOOT GROUP	LINDNER	2019
132/220/400 KV SUBSTATION AT AL FALAH	TRANSCO	AL DHAFRA ENGG.	LINDNER	2019
TRAIN GYM AT WTC	PRIVATE	BRIGHT THEME GEN. CONTG.	LINDNER	2019
132/11 KV SHAKBOUT SUBSTATION	TRANSCO	AL BADER CONTG. & CIVIL CONST.	LINDNER	2019
CMW-18023-C001	COMMAND OF MILITARY WORKS	TRUST CONST.	MEDFLOOR	2019

RAISED FLOOR- REFERENCES

PROJECT NAME	CLIENT	CONTRACTOR	MANUFACTURER	YEAR
CMW-18022-C001	COMMAND OF MILITARY WORKS	TRUST CONST.	MEDFLOOR	2019
PARK HEIGHTS 1 & II, PLOT 6311119, MBR CITY, DUBAI	DUBAI HILLS ESTATE/KHATIB & ALAMI	SHAPOORJI PALLONJI	LINDNER	2019
DEIRA WATERFRONT DEV. PHASE 1B	INVESTMENT CORPORATION OF DUBAI	ADVANCED INDUSTRIES GROUP	MEDFLOOR	2019
DUBAI SOUTH MALL	EMAAR	ARABTEC	LINDNER	2019
ALI & SONS MARINE ENGG.	-	ALI & SONS MARINE ENGG.	LINDNER	2019
POLICE CENTER AT RAS AL KHAIMAH	RAK POLICE DEPT.	ENJAZ CONSTRUCTION	MEDFLOOR	2019
EMIRATES DIPLOMATIC ACADEMY	EMIRATES DIPLOMATIC ACADEMY/	TROJAN GEN. CONTG.	MEDFLOOR	2019
DEIRA WATERFRONT DEVELOPMENT PHASE 1B- P107	INVESTMENT CORPORATION OF DUBAI	ADVANCED INDUSTRIES GROUP	MEDFLOOR	2019
MOBILITY PAVILION- EXPO 2020	EMAAR PROPERTIES	ALEC	LINDNER	2019
VIRDIS AT AKOYA OXYGEN	FRONTLINE INVESTMENT MANAGEMENT LLC	GHANTOOT GROUP	LINDNER	2019
132/220/400 KV SUBSTATION, PUMPING STATION AND CABLES AT ABU DHABI, FUJAIRAH & RAK	-	AL DHAFRA ENG & CONT. EST	LINDNER	2019
DIYAFAH INTERNATIONAL SCHOOL	DIYAFAH INTERNATIONAL SCHOOL	TERNA S.A.	LINDNER	2019
CMW-15119-C006 & C007 REMAH AIRBASE	COMMAND OF MILITARY WORKS	COPRI CONST. ENTERPRISES	MEDFLOOR	2019

RAISED FLOOR- REFERENCES

PROJECT NAME	CLIENT	CONTRACTOR	MANUFACTURER	YEAR
ROUTE 2020 METRO RAIL R70, R71 & R72	RTA	ACCIONA INFRASTRUCTURE	LINDNER	2019
CMW-18027-C001, ZAYED MILITARY COLLEGE - AL AIN	COMMAND OF MILITARY WORKS	ELECTRON BUILDING CONTG. LLC	MEDFLOOR	2019
ATLAS SECURITY	PRIVATE	ATLAS SECUTIRY	LINDNER	2019
SEA GULF INDUSTRIAL SUPPLIES PROJECT	-	SEA GULF INDUSTRIAL SUPPLIES LLC	LINDNER	2019
PARAMOUNT HOTEL & RESIDENCES	DAMAC	CHINA STATE CONSTRUCTION ENGINEERING CORP.	LINDNER	2019
RAK HOSPITAL (LAB RENOVATION)	-	AL AWAEL BUILDING CONTG.	LINDNER	2019
JULPHAR RESIDENCE AT REEM ISLAND	RAK PROPERTIES	SEG EMIRATES	MEDFLOOR	2019
SPECIAL SECURITY FORCES CAMP PHASE 01. RAS AL KHAIMAH	MINISTRY OF INFRASTRUCTURE & DEV'T.	ACTCO GEN. CONT. CO.	LINDNER	2019
KSA PAVILION AT EXPO 2020	SAUDI GOVERNMENT EXPO 2020 BUREAU	ALEC	LINDNER	2019
ADCB WAREHOUSE MUSSAFAH	ADCB	GULF ERECTION CO.	LINDNER	2019
CIVIL DEFENSE BUILDING AT AL FALAH, P1, SEC. 1F AUH	ABU DHABI POLICE /MUSANADA	NATIONAL INNOVATIVE GEN. MAINT.	MEDFLOOR	2019
KHALIFA CITY SHOPPING MALL ON SW4, C1, AUH	LINE INVESTMENTS	SHAPOORJI PALOONJI MIDEAST	LINDNER	2019

RAISED FLOOR- REFERENCES

PROJECT NAME	CLIENT	CONTRACTOR	MANUFACTURER	YEAR
EPC FOR MCR BLDG. AT OPN MAQTA	ADNOC	AL JABER GROUP	LINDNER	2019
FUJAIRAH BUSINESS CENTER ON PLOT NO. 17	AL TAIF INVESTMENT	CHINA STATE CONSTRUCTION ENGINEERING CORP.	LINDNER	2019
AL AIN HOSPITAL, ADMINISTRATION BUILDING	SEHA	ARABTEC SAN JOSE JV	LINDNER	2019
400 KV SUBSTATION AT SHAMS	DEWA	NASS CONTRACTING	LINDNER	2019
VVIP VILLA AT AL MINA PALACE	CROWN PRINCE COURT	SILVER COAST CONST. & BORING-AUH	LINDNER	2020
PRIVATE VILLA ON PLOT NO. 6166760 AT NAD AL SHEBA 3	ENGINEERING OFFICE	AL GHURAIR CEW-DXB	LINDNER	2020
ONE ZA'ABEEL	INVESTMENT CORPORATION OF DUBAI	ALEC -DUBAI	LINDNER	2020
FORTE PLOTS D1-D2	EMAAR PROPERTIES	ARCANE INTERIOR DECORATION	MEDFLOOR	2020
MAYAN YAS ISLAND LIVING PLOT NO. YS3-6-4	ALDAR PROPERTIES	AL RAKHA GROUP	LINDNER	2020
ZAYED NATIONAL MUSEUM AT SAADIYAT ISLAND	TDIC	DEPA INTERIOR LLC	LINDNER	2020
CMW-19020-C002- QUSAHWEERA	COMMAND OF MILITARY WORKS	COPRI CONSTRUCTION ENT. EST.	MEDFLOOR	2020
PUNITIVE & REFORMATORY BLDG AT AL WATHBA	MUSANADA	GHANTOOT TRANS & GEN. CONT.	LINDNER	2020

RAISED FLOOR- REFERENCES

PROJECT NAME	CLIENT	CONTRACTOR	MANUFACTURER	YEAR
TRANSCO LDC MAIN GATE- MAQTA	CICPA	BIN MANSOUR GROUP	LINDNER	2020
G+1+R OFFICE & CAR PARKING AT MOH'D BIN ZAYED	-	ATLAS SECURITY	LINDNER	2020
EREC BUILDING NO. 43 AT MUHAISNAH	EMIRATES REAL ESTATE CORPORATION	PIVOT ENGINEERING & GEN. CONTG.	MEDFLOOR	2020
CONSUMER RECEIPT STATION AT DHAFRA	ADNOC	ALI & SONS MARINE ENGG.	LINDNER	2020
EPC FOR M PROJECT FUJAIRAH	ADNOC	SK ENGINEERING & CONSTRUCTION CO.	LINDNER	2021
MUSEUM OF THE FUTURE	MERAAS DEVELOPMENT / DUBAI FUTURE FOUNDATION	AL TAYER STOCKS	LINDNER	2021
FIRE AND LIFE SAFETY REQUIREMENTS FOR SERVICE ROADS OF AL MARYAH ISLAND	MUBADALA	ART LINES CONTRACTING CO. LLC	LINDNER	2021
132/11 KV - MARINA COMMUNITY SUBSTATION	DEWA	VENCO IMTIAZ CONTRACTING CO. LLC	LINDNER	2021
HANSA ELECTROMECHANICAL PROJECT	-	HADER SECURITY & COMMUNICATION SYSTEMS LLC	MEDFLOOR	2021
INFRADEF FACILITY MANAGEMENT PROJECT	-	INFRADEF FACILITY MANAGEMENT	LINDNER	2021
TRANSCO CONTROL ROOM AJBAN/SWIEHAN	TRANSCO	HYSSNA INTERNATIONAL	LINDNER	2021
YAS SOUTH MEDIA ZONE	ALDAR PROPERTIES	ARABIAN CONSTRUCTION CO.	LINDNER	2021

RAISED FLOOR- REFERENCES

PROJECT NAME	CLIENT	CONTRACTOR	MANUFACTURER	YEAR
AL DHAFRA PV2 SOLAR PV	DHAFRA PV2 ENERGY CO.	FORCE 10	LINDNER	2022
INFRADEF FAC. MANAGEMENT	PRIVATE	INFRADEF FAC. MANAGEMENT	LINDNER	2022
MINA TUNNEL ABU DHABI	DEPARTMENT OF MUNICIPALITIES AND TRANSPORT	AL TAWASUL GEN. CONTG.	LINDNER	2022
PV2 INDEPENDENT POWER PROJ.	DHAFRA PV2 ENERGY CO.	PROMINENT STAR CONTG.	LINDNER	2022
ADNOC-NPCC FOR BELBAZEM BLOCK DEV.	AL YASAT PETROLEUM	DENHOLM YAM CONTG.	LINDNER	2022
FIRE AND LIFE SAFETY REQUIREMENTS FOR SERVICE ROADS OF AL MARYAH ISLAND	MUBADALA	ART LINES CONTRACTING CO. LLC	LINDNER	2022
HASSYAN PUMPING STATION	DEWA	METITO	MEDFLOOR	2022
BNPP NUCLEAR POWER PLANT	-	GUSAN CONST. COMPANY	LINDNER	2022
THE PENINSULA, BUSINESS BAY - SALES OFFICE	SELECT GROUP	CHINA STATE CONSTRUCTION	LINDNER	2022
ONE ZA'ABEEL - ALL DAY DINING	INVESTMENT CORPORATION OF DUBAI	KHANSHEB CIVIL ENGINEERING	LINDNER	2023
WAM BORDER, DIBBA FUJAIRAH	MINISTRY OF PRESIDENTIAL AFFAIR	MASRI ENGINEERING & CONT'G	LINDNER	2023
MOI SPORTS COMPLEX, ABU DHABI	MINISTRY OF INTERIORS	DHABI CONTRACTING	LINDNER	2023

RAISED FLOOR- REFERENCES

PROJECT NAME	CLIENT	CONTRACTOR	MANUFACTURER	YEAR
EMIRATES SCHOOL, DIBBA	UAE PRESIDENT COURT	MASRI ENGINEERING & CONT'G.	MEDFLOORS	2023
ONE ZA'ABEEL - ICD OFFICE	INVESTMENT CORPORATION OF DUBAI	BOND INTERIORS	LINDNER	2023
MAZYRAA BORDER CROSSING EXTENSION AT MASFOUT SECTOR - 01, PLOT NO. 1960	PRESIDENTIAL COURT	MASRI ENGINEERING & CONT'G.	LINDNER	2023
ADNOC-BELBAZEM BLOCK DEVELOPMENT - SUBSTATION BUILDINGS	ADNOC	DENHOLM YAM CONT	LINDNER	2023
CMW-20018-C001, FACILITIES AT LIWA	CMW	NAEL GENERAL CONTRACTING	LINDNER	2023